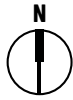
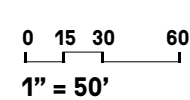


EXHIBIT 1: PROJECT LOCATION MAP

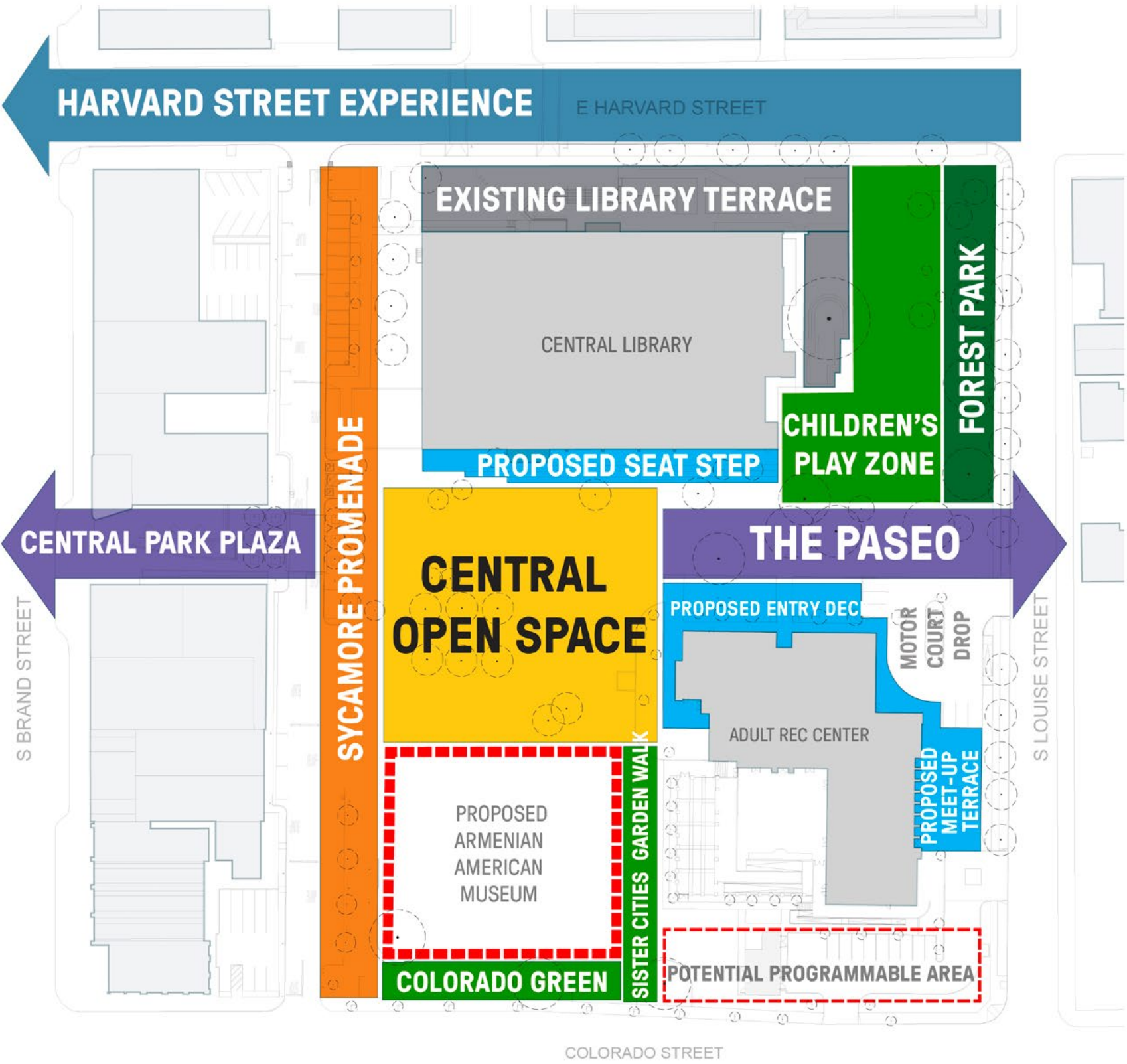


LANDSCAPE LEGEND

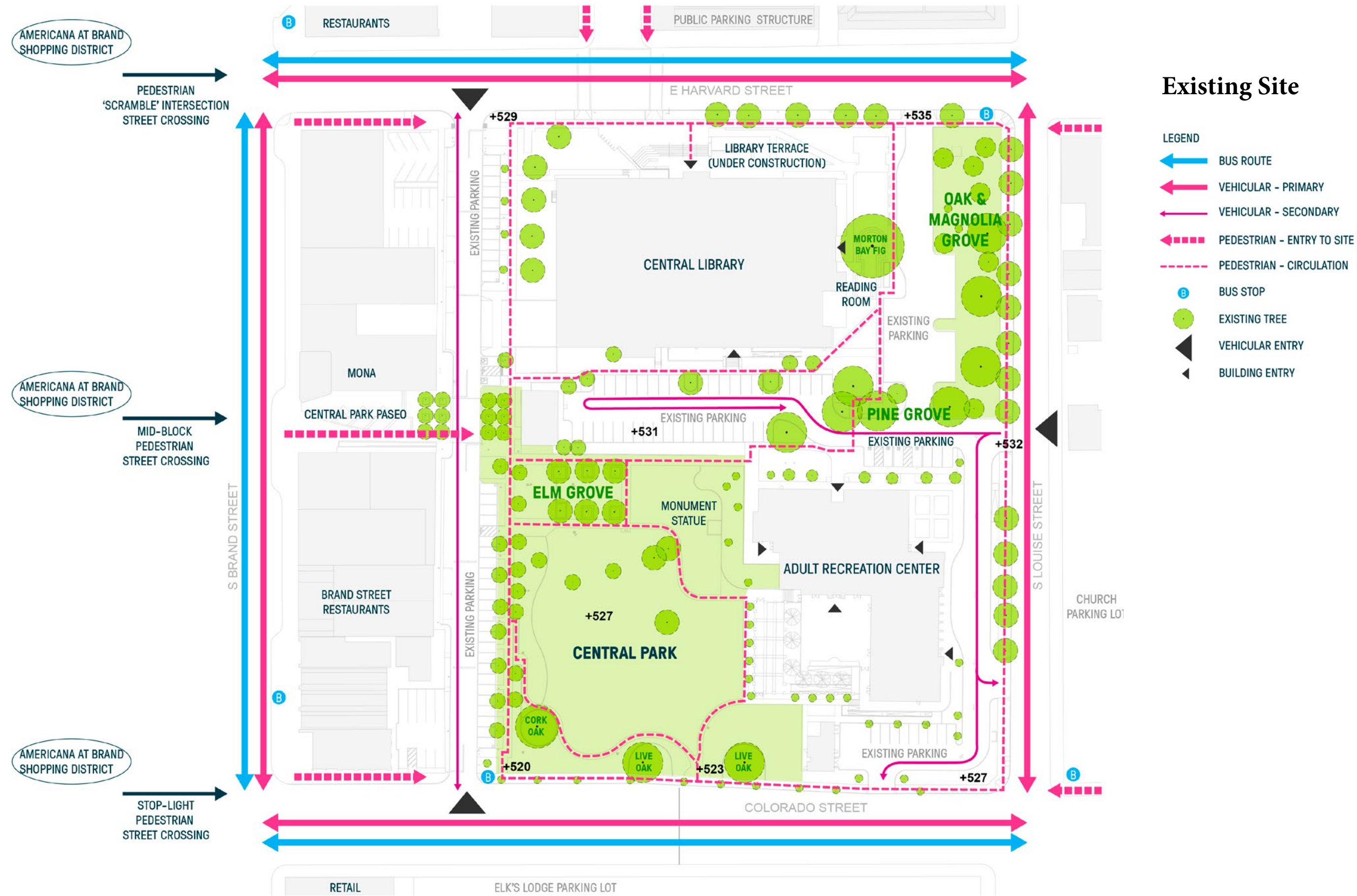
- Limit of Work
- Existing Tree
- +531.0 Spot Elevation
- 1 Great Lawn
- 2 Grand Steps
- 3 East Paseo Entry
- 4 Library Steps
- 5 Sloped Lawn/Amphitheater
- 6 Event Stage & Canopy
- 7 Tree Grove with Seating
- 8 East Paseo(Programmable Open Plaza)
- 9 East Paseo Entry Plaza
- 10 Splash Pad
- 11 Kid's Playground
- 12 Outdoor Fitness Plaza
- 14 Library Lawn
- 15 Forest Boardwalk
- 16 Wood Deck/Outdoor Reading Slanted
- 17 Wall
- 18 Pocket Plaza
- 19 Terraced Planter
- 20 Sister's City Plaza & Sculptural Steps
- 23 Public Restroom
- 24 Sycamore Promenade



"GRAND STEPS" SCHEMATIC DESIGN

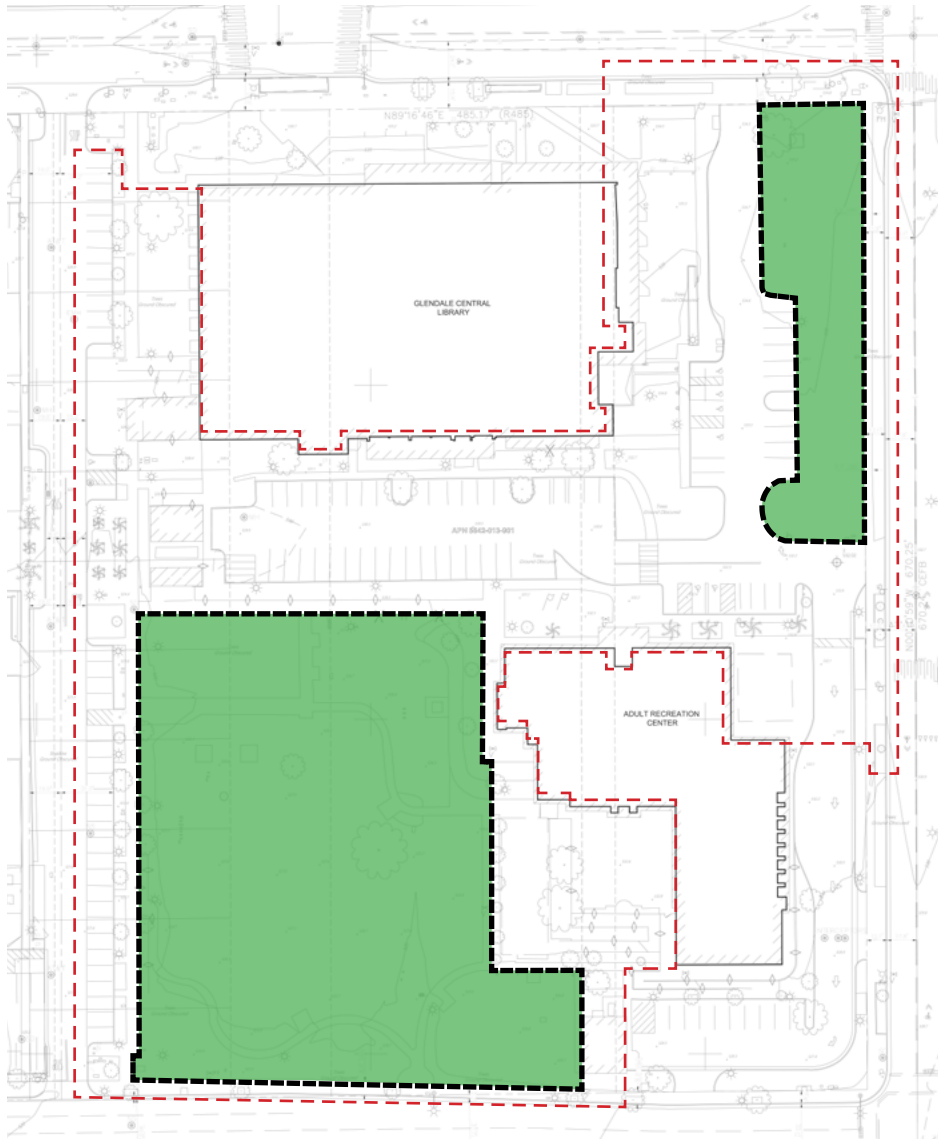


"GRAND STEPS" SCHEMATIC DESIGN



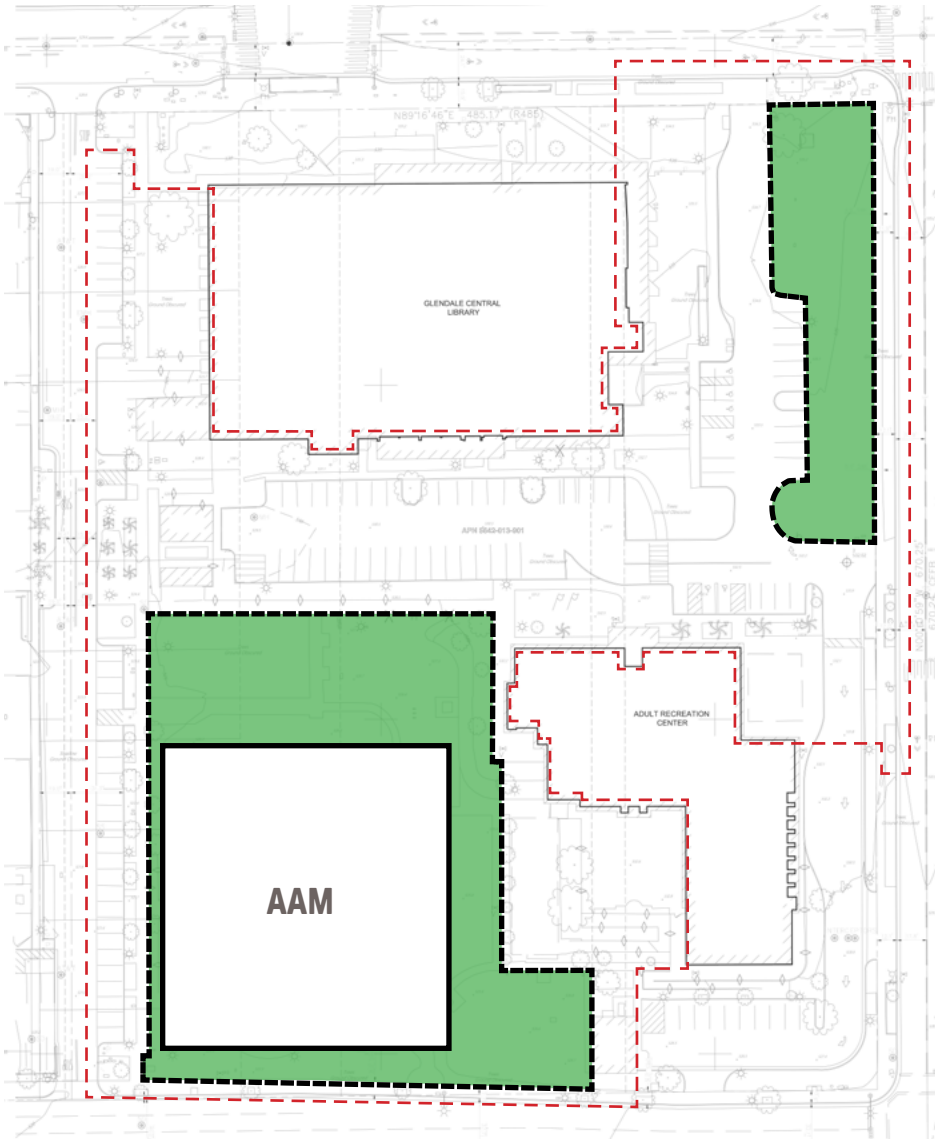
"GRAND STEPS" SCHEMATIC DESIGN

Open Space



EXISTING DECEMBER 2017

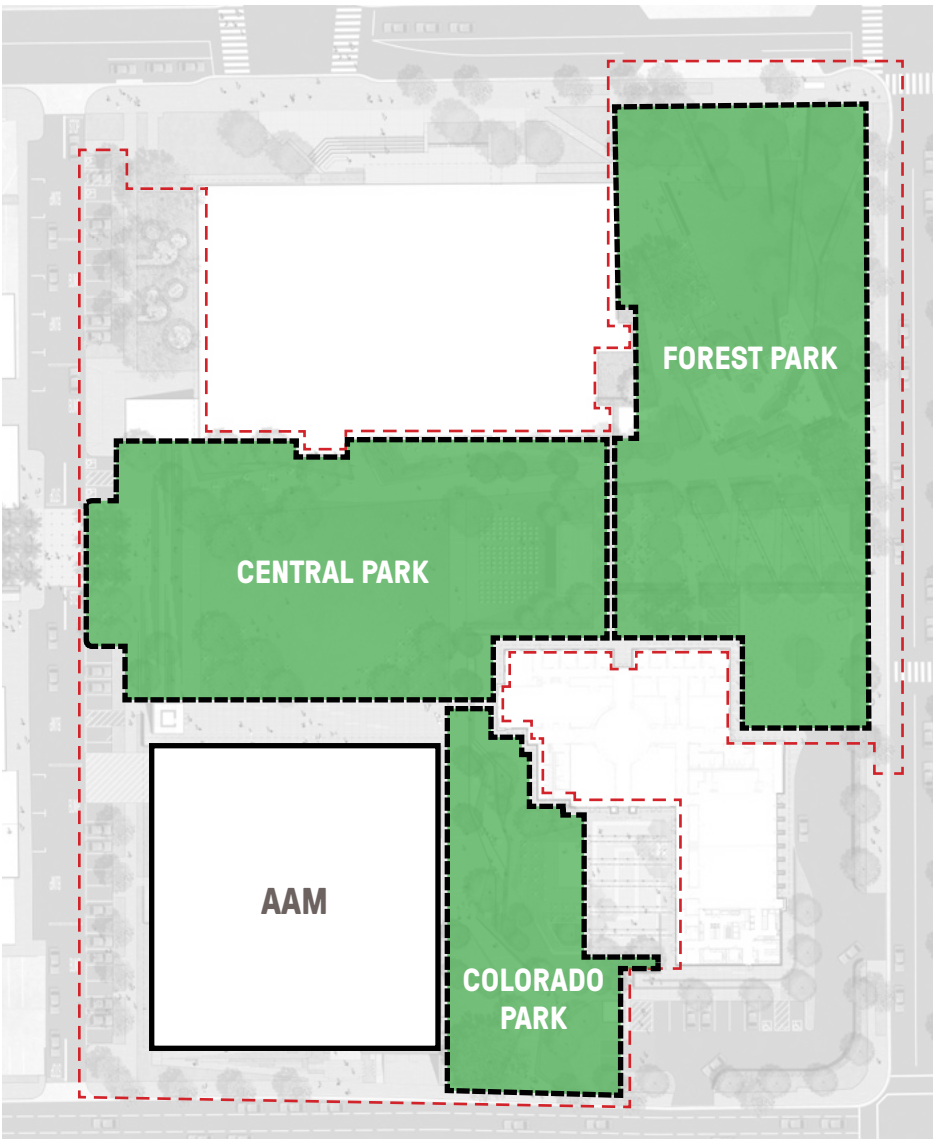
- TOTAL OPEN SPACE : 76,675 ft²



EXISTING DECEMBER 2017 WITH MUSEUM

- MUSEUM BUILDING FOOTPRINT : 28,545 ft²

- TOTAL OPEN SPACE : 48,130 ft²



PROPOSED LANDSCAPE DESIGN WITH MUSEUM

- CENTRAL PARK: 42,910 ft²
- FOREST PARK: 18,874 ft²
- COLORADO PARK: 53,661 ft²
- TOTAL OPEN SPACE : 115,445 ft²

"GRAND STEPS" SCHEMATIC DESIGN

Design Principles

1 Create central open space

Provide a ~200' x 200' square Central Open Space as the focal heart of the block that ties together the various paseos and links the surrounding public programs. Size for variety of diverse events & programming.

2 Expand central paseo

Continue the existing Paseo, originating at Brand Boulevard, through the entire block.

3 Establish secondary paseo

Maintain a 30' minimum offset from ARC terrace & sidewalk for a Paseo between buildings connecting Colorado Street to Central Park.

4 Keep sycamore Promenade

Maintain a row of Sycamores along sidewalk.

5 Site building near street

Maintain a 30' offset from curb to bring the building closer to Colorado Street, focusing open space in the central area.

6 Create a large forest park & playground

West of the library at most protected corner of the block.

7 Preserve large existing pine trees

Located at east end of Paseo to frame Forest Park.

8 Locate paseo drop-off

Create new designed drop-off area to south of the Paseo for access to surrounding buildings & Central Park Paseo.

9 Integrate terrace with paseo design

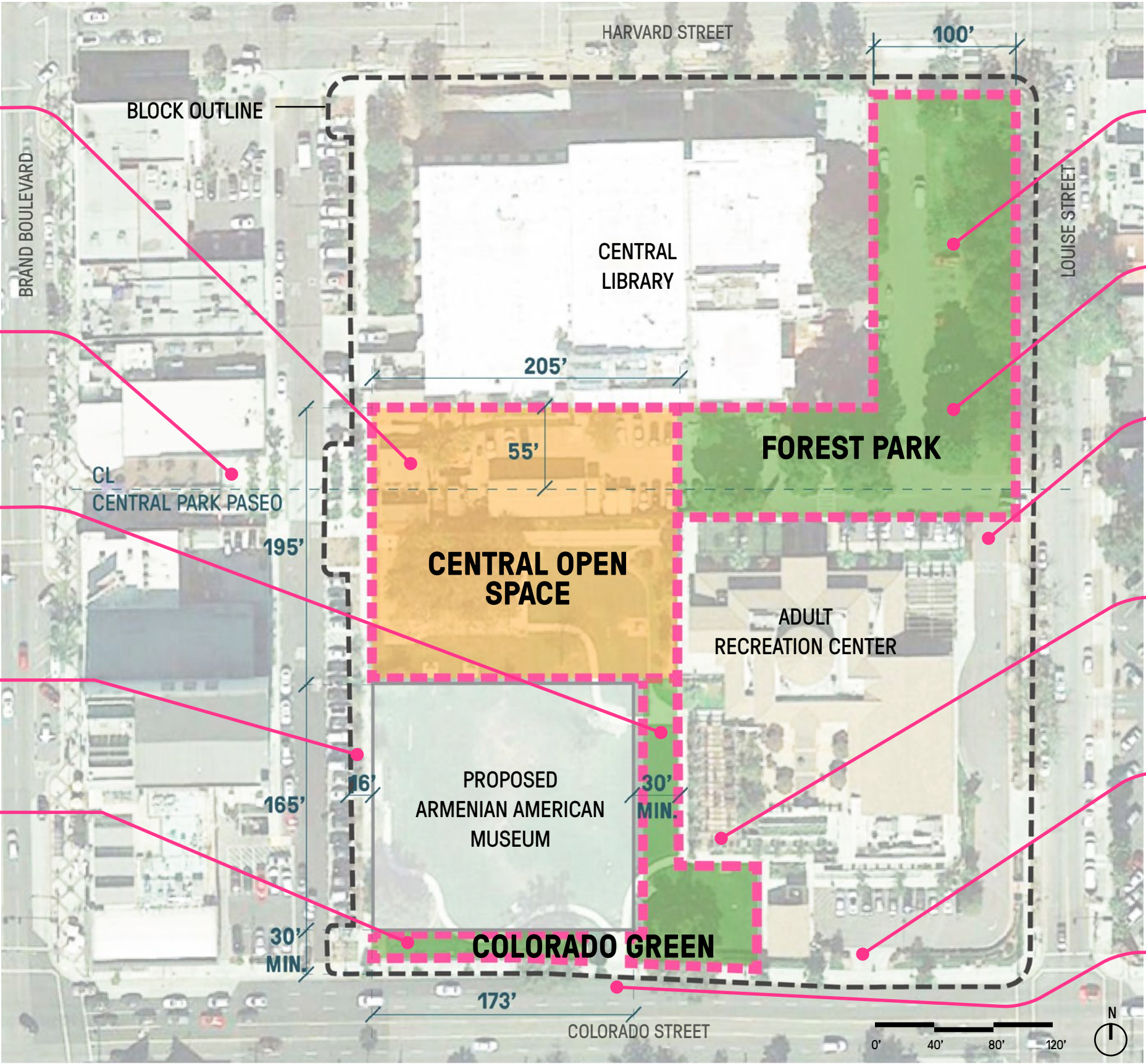
Reprogram under-utilized space to unify with the new design program & expand the paseo.

10 Program 4th corner

Remove existing shed and extend park to Southeast corner of the block. Possible area for additional program.

11 Enter garage from Colorado

Locate parking garage to take advantage of grading.



"GRAND STEPS" SCHEMATIC DESIGN

Community Engagement Summary

Open space recommendations to be considered during the PS&E Phase:

Most-to-least important

1. The open space concept should provide places where one can experience all the community, culture, and activity of city life, as well as places where one can feel a connection with nature and an escape from the stressful aspects of city living.
2. Art and culture should be a priority in the concept.
3. Provide open, flexible green space that can accommodate events with large numbers of attendees.
4. Encourage consistent, positive use of the park through programming that appeals to all types of people, throughout the day, week and year.
5. Regarding play and active recreation, consider providing an area that is dedicated to play features for children, and a flexible open green lawn area that is multi-functional.
6. Regarding food and eating opportunities, consider a more flexible, open space that can accommodate seating/dining on a regular basis, as well as temporary market-type food offerings.
7. The Central Park Block project should serve the entire community of Glendale, not just those who live in close proximity to it.
8. Evaluate potential crime and safety issues, and police department recommendations.
9. Continue to evaluate parking availability and demand. Ensure there is adequate accessible parking within the block to support the library, recreation center, park, and museum.
10. Look for opportunities to incorporate a multi-purpose water feature, but its inclusion should not be a priority.

