

**Legend**

- Proposed Gas Pipeline
- Proposed Water Pipeline
- Proposed Power Plant Facility Boundary
- SR - Special Recreation, Recreation/Open Space
- Parcels - 300ft Buffer
- Parcels - 500ft Buffer
- Parcels

**Notes**

1. Coordinate System: NAD 1983 StatePlane California V FIPS 0405 Feet  
2. Service Layer Credits: Sources: Esri, HERE, DeLorme, USGS, Intermap, INCREMENT P, NRCan, Esri Japan, METI, Esri China (Hong Kong), Esri Korea, Esri (Thailand), MapmyIndia, NGCC, © OpenStreetMap contributors, and the GIS User Community



Project Location  
Glendale, CA

Project No.: 2057123300  
Prepared by JT on 2017-01-09  
Technical Review by CH on 2017-01-09  
Independent Review by SR on 2017-01-09

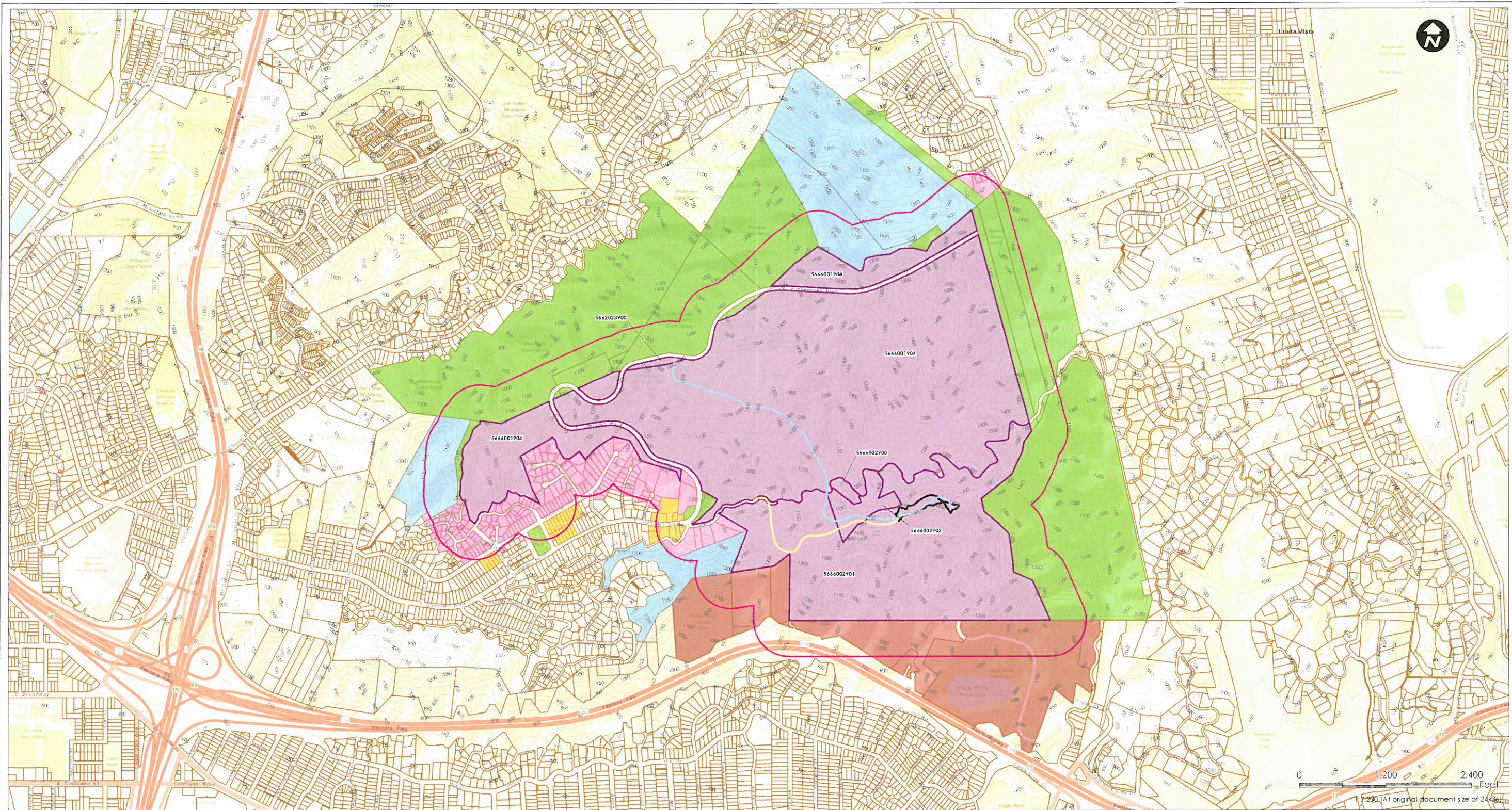
Client/Project  
City of Glendale Water and Power  
Biogas Renewable Generation Project  
SR Review

Figure No.  
**1**

Title  
**Location Map**

Case No.





#### Notes

1. Coordinate System: NAD 1983 StatePlane California V FIPS 0405 Feet
2. Service Layer Credits: Sources: Esri, HERE, DeLorme, USGS, Intermap, INCREMENT P, NRCan, Esri Japan, METI, Esri China (Hong Kong), Esri Korea, Esri (Thailand), MapmyIndia, NGCC, © OpenStreetMap contributors, and the GIS User Community

#### Legend

- Proposed Gas Pipeline
- Proposed Water Pipeline
- Proposed Power Plant Facility Boundary
- Parcels
- Parcels - 500ft Buffer

#### Parcel Zoning & Land Use

- Project Parcels/SR - Special Recreation
- R1 - Low Density Residential
- R1R - Restricted Residential
- ROS - Residential Open Space
- ROS III - Very Low Density Residential/Open Space
- SR - Special Recreation

#### Project Location

Glendale, CA

Project No.: 2057123300

Prepared by JI on 2018-01-17

Technical Review by CH on 2018-01-17

Independent Review by SR on 2018-01-17

#### Client/Project

City of Glendale Water and Power  
Biogas Renewable Generation Project  
SR Review

#### Figure No.

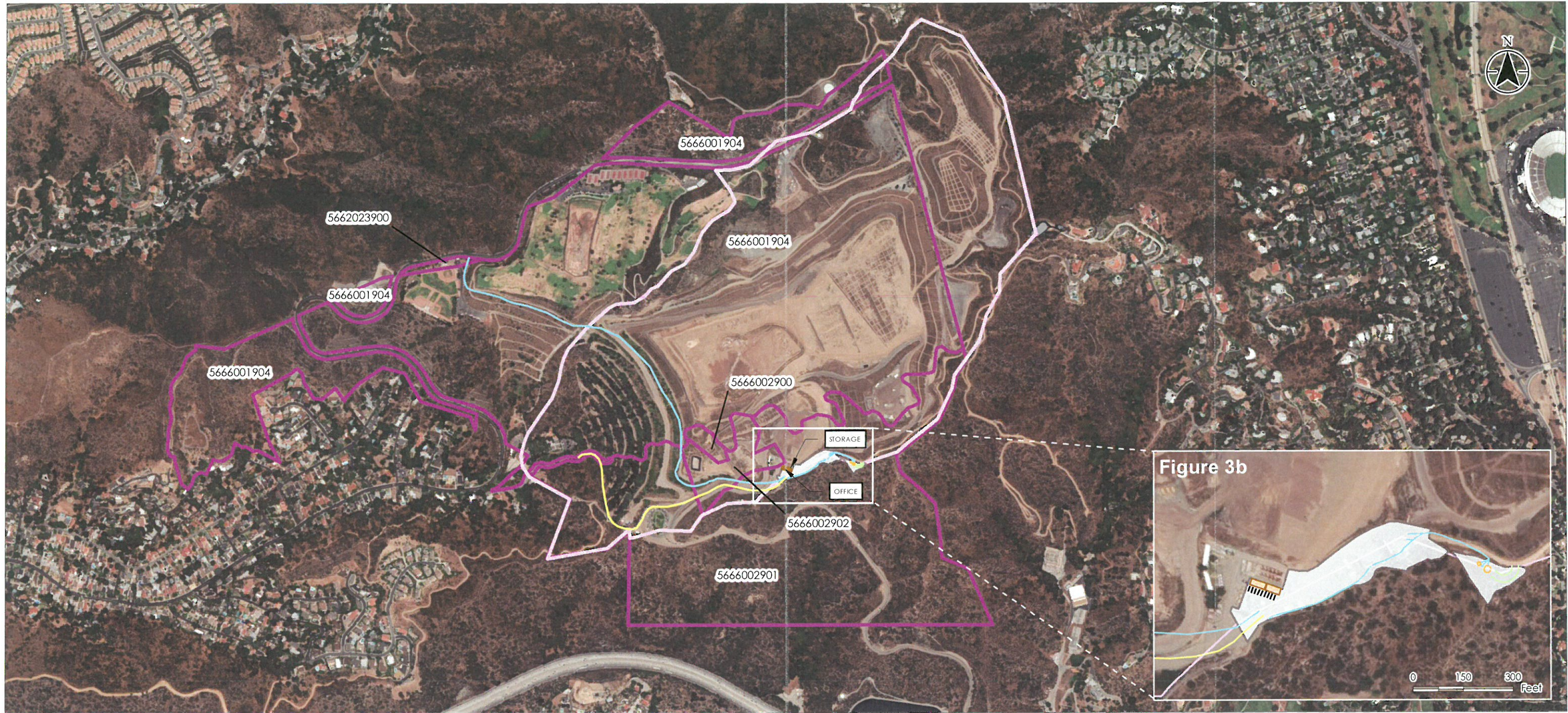
2

#### Title

Zoning Map

#### Case No.





**Legend**

- Proposed Gas Pipeline
- Proposed Water Pipeline
- Water Tank Access Road
- Building
- New Water Tank
- Area to Hardscape
- Parking Stall
- Active Landfill Boundary
- Project Parcel Boundaries

**Notes**

1. Coordinate System: NAD 1983 StatePlane California V FIPS 0405 Feet
2. Service Layer Credits: 2016 National Agriculture Imagery Program (NAIP)
3. No landscaping, streets, alleys, property lines, building to property line dimensions.
4. All hardscape will consist of either concrete, asphalt, or gravel.
5. The proposed approx. 2.2-acre (95,832 sq. ft.) power plant would be located on a portion of an approx. 95-acre (4,138,200 sq. ft.) site owned by LA County.
6. The two buildings will be less than 1,000 sq ft each.



Project Location: Glendale, CA  
Project No.: 2057123300  
Prepared by JT on 2018-01-17  
Technical Review by CH on 2018-01-17  
Independent Review by SR on 2018-01-17

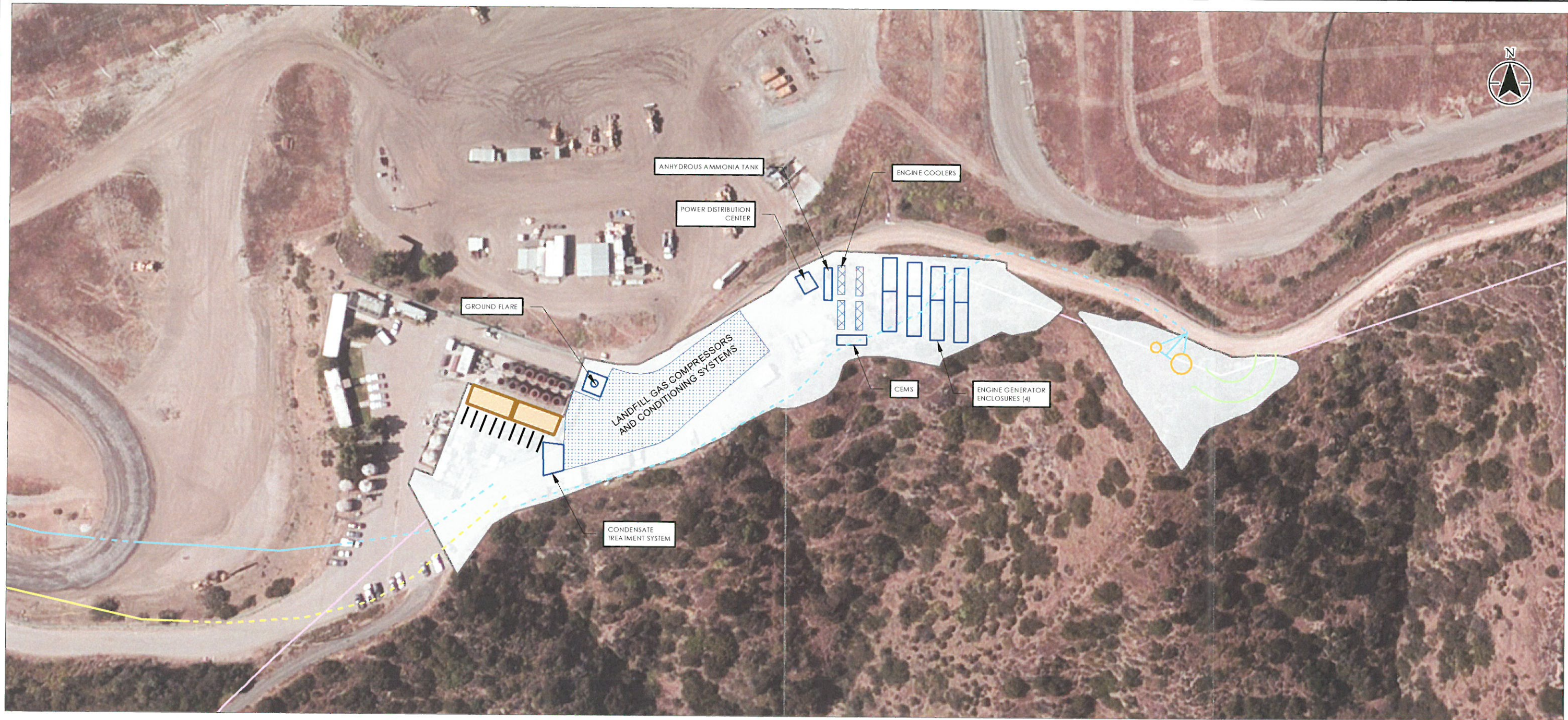
Client/Project:  
City of Glendale Water and Power  
Biogas Renewable Generation Project  
SR Review

Figure No.:  
**3a**

Title:  
**Plot Plan**

Case No.:





#### Legend

- Proposed Gas Pipeline
- Proposed Gas Pipeline (Underground)
- Proposed Water Pipeline
- Proposed Water Pipeline (Underground)
- Water Tank Access Road
- Building
- New Water Tank
- Area to Hardscape
- Parking Stall
- Active Landfill Boundary
- Proposed Facilities

#### Notes

1. Coordinate System: NAD 1983 StatePlane California V FIPS 0405 Feet
2. Service Layer Credits: 2016 National Agriculture Imagery Program (NAIP)
3. No landscaping, streets, alleys, property lines, building to property line dimensions.
4. All hardscape will consist of either concrete, asphalt, or gravel.
5. The proposed approx. 2.2-acre (95,832 sq. ft.) power plant would be located on a portion of an approx. 95-acre (4,138,200 sq. ft.) site owned by LA County.
6. The two buildings will be less than 1,000 sq ft each.
7. See Figure 5, Floor Plan, for equipment and structure dimensions, material and color.

0 100 200 Feet  
1:1,200 (At original document size of 11x17)



Project Location  
Glendale, CA  
Project No.: 2057123300  
Prepared by JT on 2017-01-15  
Technical Review by CH on 2017-11-15  
Independent Review by SR on 2017-11-15

Client/Project  
City of Glendale Water and Power  
Biogas Renewable Generation Project  
SR Review

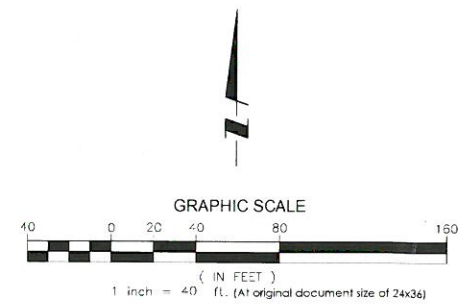
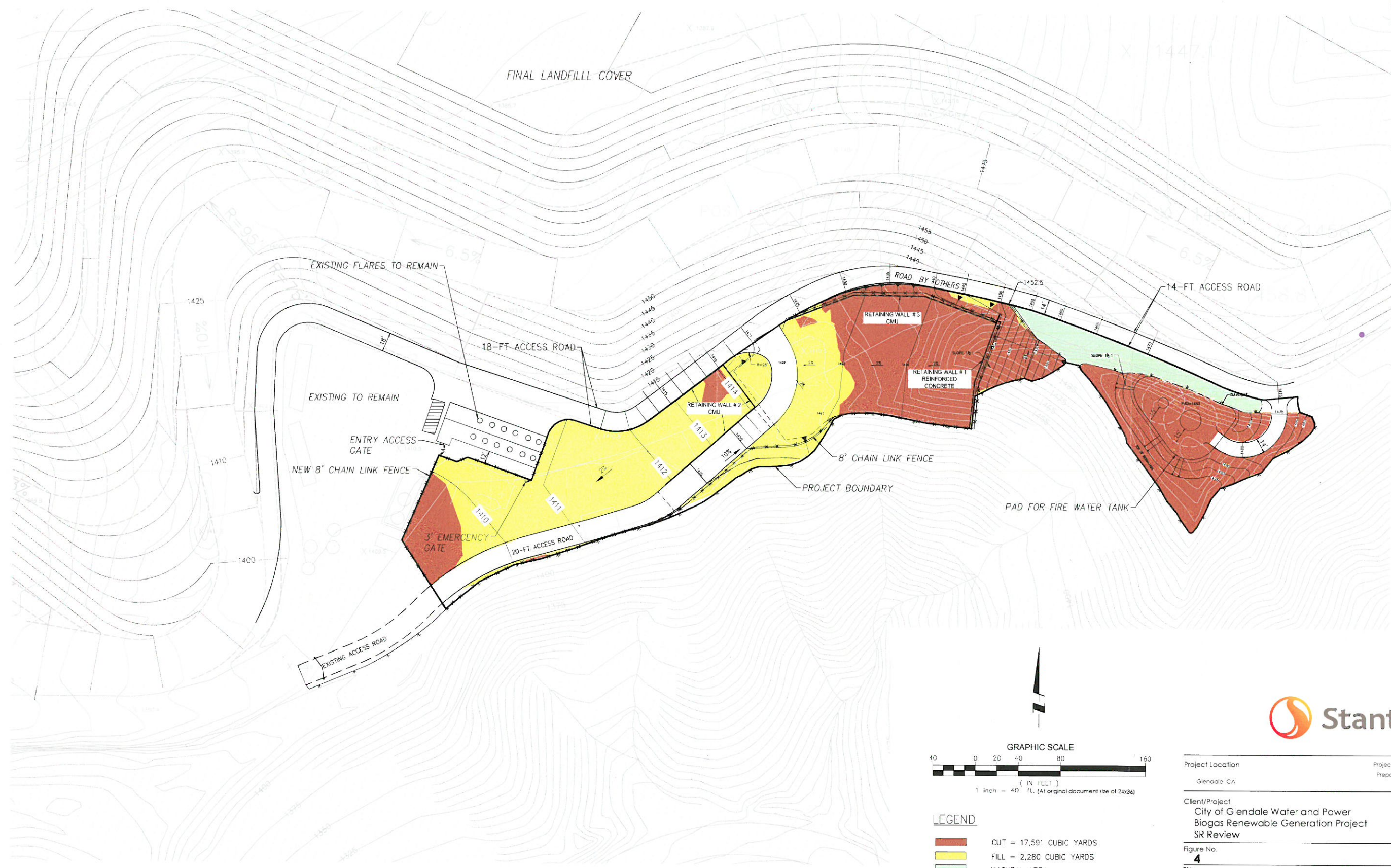
Figure No.

3b

Title  
Plot Plan Detail

Case No.





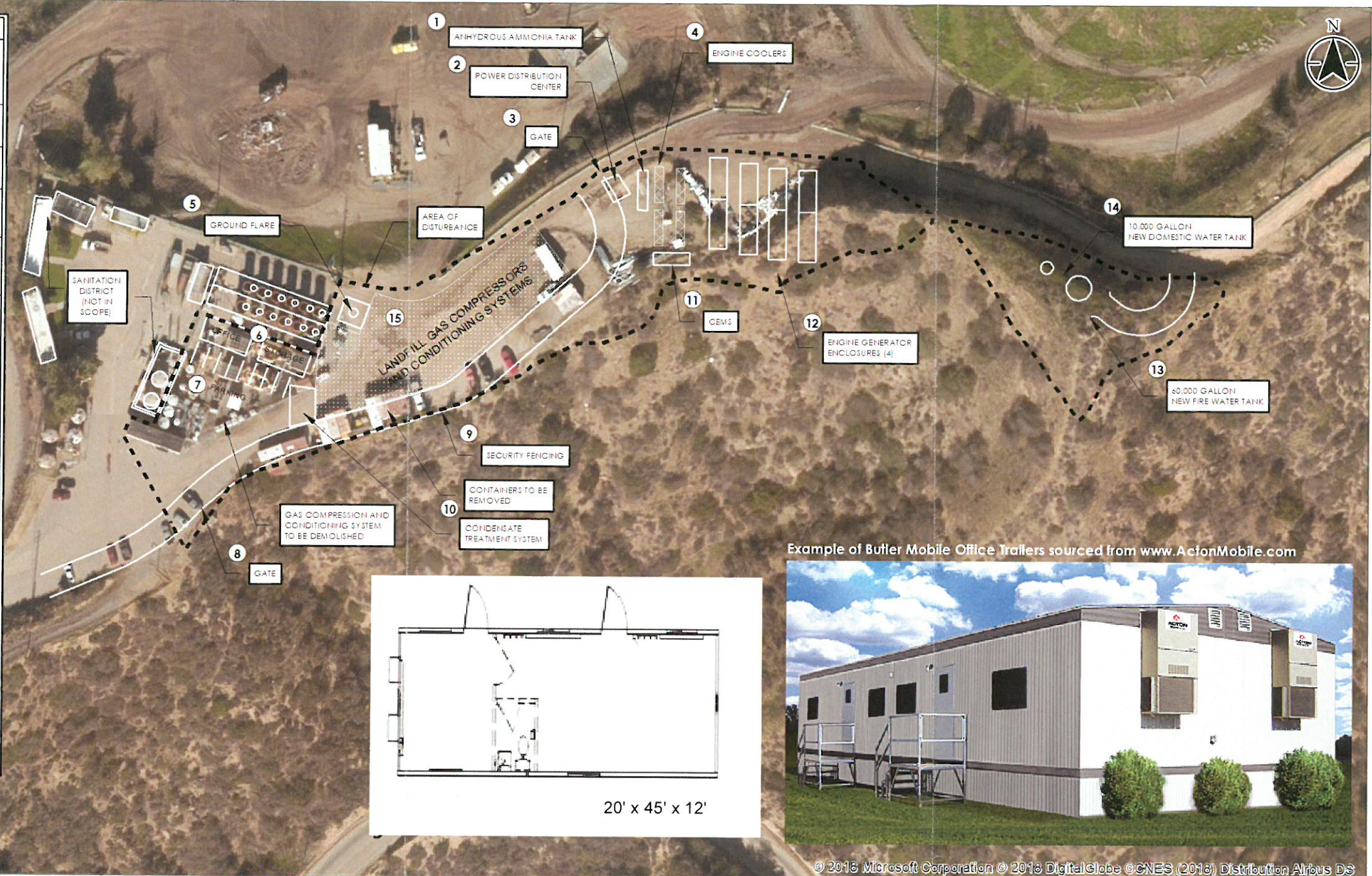
LEGEND	
<span style="display:inline-block; width:15px; height:10px; background-color:darkred; border:1px solid black;"></span>	CUT = 17,591 CUBIC YARDS
<span style="display:inline-block; width:15px; height:10px; background-color:yellow; border:1px solid black;"></span>	FILL = 2,280 CUBIC YARDS
<span style="display:inline-block; width:15px; height:10px; background-color:lightgreen; border:1px solid black;"></span>	NATURAL AREA
<span style="display:inline-block; width:15px; height:10px; background-color:white; border:1px solid black;"></span>	ROAD



Project Location	Glendale, CA	Project No.: 2057123300
Client/Project	City of Glendale Water and Power	Prepared on 2017-12-19
	Biogas Renewable Generation Project	
	SR Review	
Figure No.	4	
Title	Cut and Fill Map	
Case No.		



No.	Equipment/Structure	Dimensions	Material	Color
1	Anhydrous Ammonia Tank	8' diameter x 36' long cylindrical tank upon a saddle. The Tank will extend approximately 9' high within a 40' x 14' x 4.5' high enclosure.	Steel Tank in Concrete Enclosure	Capital Tan
2	Power Distribution Center	16' x 24' x 12' high.	Steel	Capital Tan
3	Gate	Width of the road x 8' high.	Reinforced Chain Link	Aluminum Gray
4	Engine Coolers	Four engine coolers, each 38' x 7.5' x 5' high, lifted on pedestals to a total of 13' high.	Steel	Capital Tan
5	Ground Flare	10' x 10' x 4' high skid mounted equipment with a 3' diameter x 40' high flare stack.	Steel	Capital Tan
6	Office and Storage Buildings	Two prefabricated buildings, each 45' x 20' x 12' high.	Steel	Capital Tan
7	Parking Stalls	Eight parking stalls each 10' x 20'.	Asphalt (area currently paved w/asphalt)	Black with White Stripes
8	Gate	Width of the road x 8' high.	Reinforced Chain Link	Aluminum Gray
9	Security Fence	8' high.	Reinforced Chain Link	Aluminum Gray
10	Condensate Treatment System	Numerous vessels and skids taking up an area 50' x 40', no vessel higher than 20'.	Steel	Capital Tan
11	CEMS	Continuous Emissions Monitoring System within a 8' x 10' x 8' high enclosure.	Steel	Capital Tan
12	Engine Generator Enclosures	Four engine generator enclosures, each 60' x 14' x 25' high with 3' diameter x 40' high exhaust stacks.	Steel	Capital Tan
13	60,000 Gallon Fire Water Tank	20' diameter x 30' high.	Steel	Capital Tan
14	10,000 Gallon Domestic Water Tank	12' diameter x 12' high.	Steel	Capital Tan
15	Landfill Gas Compression and Conditioning System	Numerous vessels and skids taking up an area of approximately 10,000 square feet, no vessel higher than 20'.	Steel	Capital Tan



#### Legend

Proposed Power Plant Facility Boundary

Existing Facilities

Proposed Facilities

#### Building Elevations

- Two prefabricated buildings of equal size will be located on the project site.
- The dimensions are approximately 45' x 20' x 12' (length x width x height), single story, constructed of metal (corrugated steel or aluminum).
- Roofing material is metal (steel or aluminum).
- The buildings will be tan in color.
- The buildings will have drip-rail gutters.
- The office building will have two doors and multiple horizontal sliding windows.
- The office building will contain one bathroom and one to two HVAC units.

- The storage building will have two doors and no windows.
- The storage building will contain no bathrooms and no HVAC units.
- No solar or mechanical equipment is existing.
- No solar or mechanical equipment is proposed.
- Conduits exist throughout the property.
- No new landscaping will be added.
- See inset example of prefabricated building.
- The Fire Plan for the facility will be approved by the Glendale Fire Department.



Project Location: Glendale, CA  
Project No.: 2057123300  
Prepared by: JT on 2018-01-17  
Technical Review by: CH on 2018-01-17  
Independent Review by: SR on 2018-01-17

Client/Project: City of Glendale Water and Power  
Biogas Renewable Generation Project  
SR Review

Figure No.:

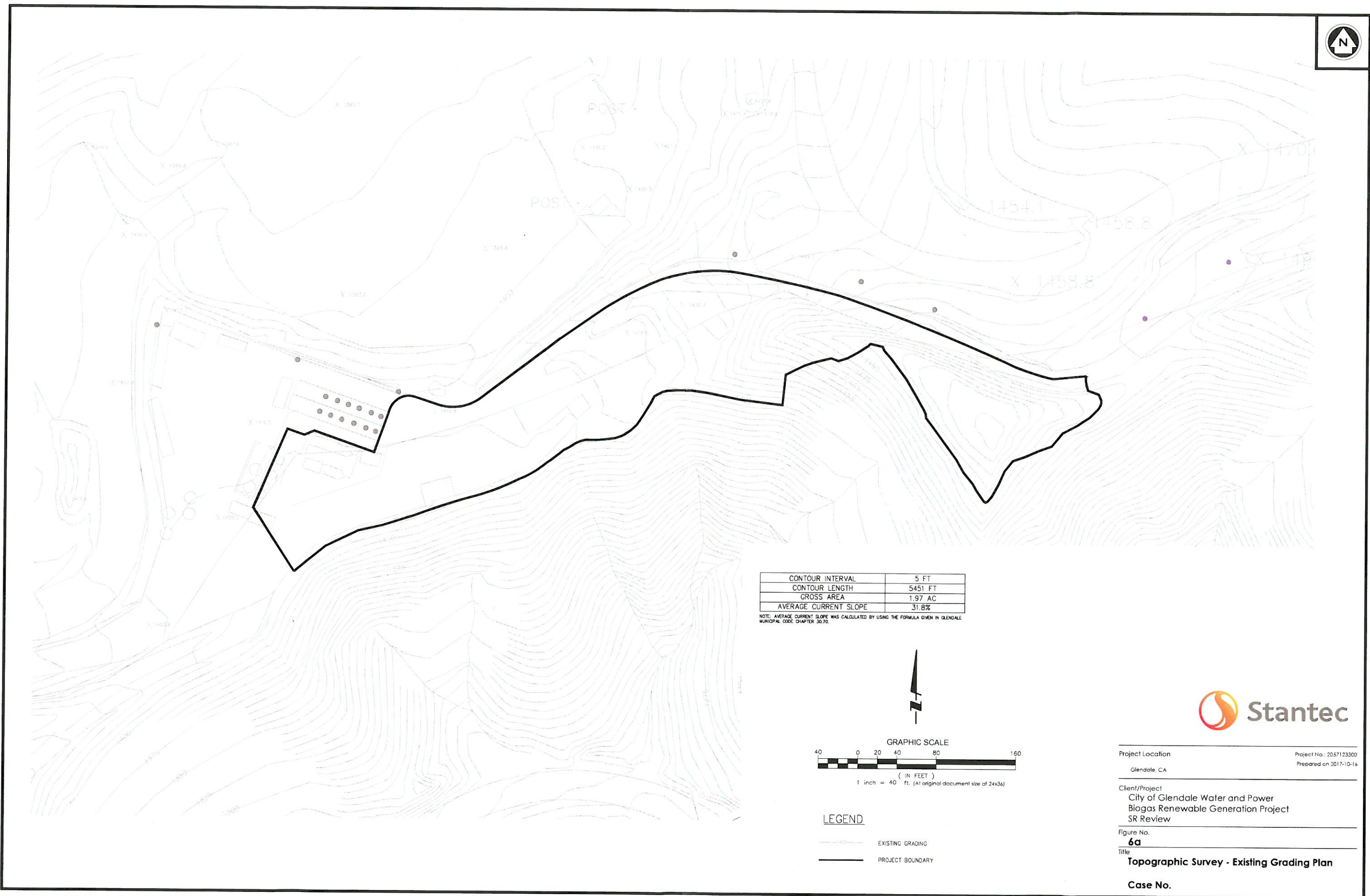
5

Title

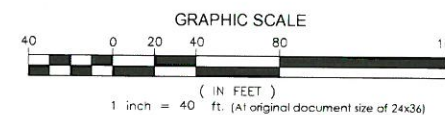
Floor Plan

Case No.



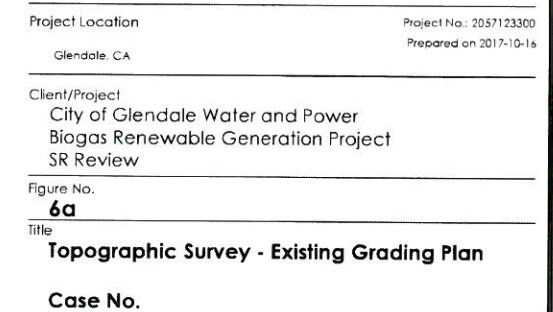


NOTE: AVERAGE CURRENT SLOPE WAS CALCULATED BY USING THE FORMULA GIVEN IN GLENDA MUNICIPAL CODE CHAPTER 30.70.

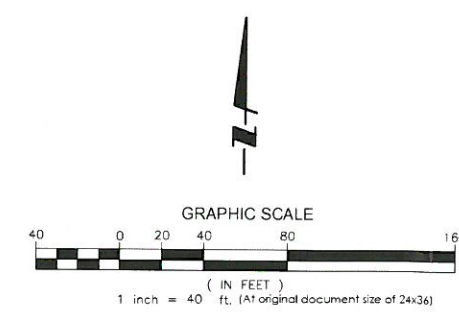
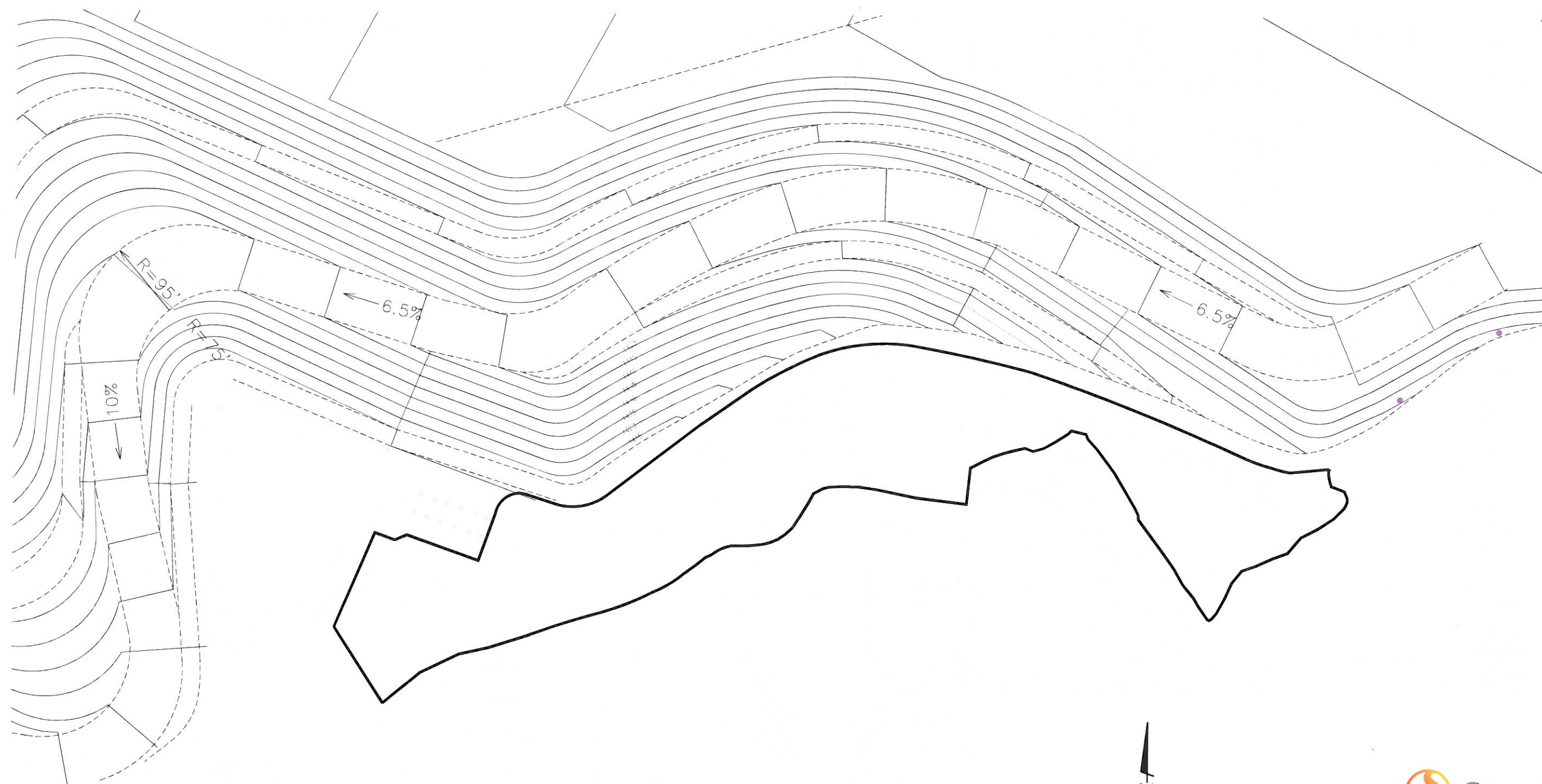


EXISTING GRADING

PROJECT BOUNDARY







- LEGEND**
- EXISTING GRADING
  - LANDFILL GRADING BY OTHERS
  - PROJECT BOUNDARY



Project Location  
Glendale, CA

Project No.: 2057123300  
Prepared on 2017-10-16

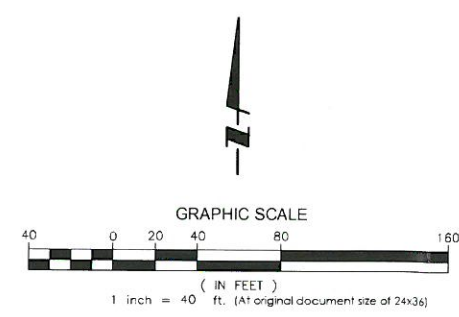
Client/Project  
City of Glendale Water and Power  
Biogas Renewable Generation Project  
SR Review

Figure No.  
**6b**

Title  
**Topographic Survey - Landfill Grading Plan**

Case No.





- LEGEND**
- PROPOSED PROJECT GRADING
  - LANDFILL GRADING BY OTHERS
  - EXISTING GRADING
  - PROJECT BOUNDARY



Project Location  
Glendale, CA

Project No.: 2057123300  
Prepared on 2017-12-19

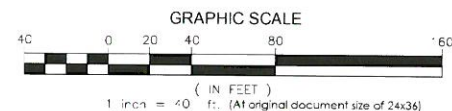
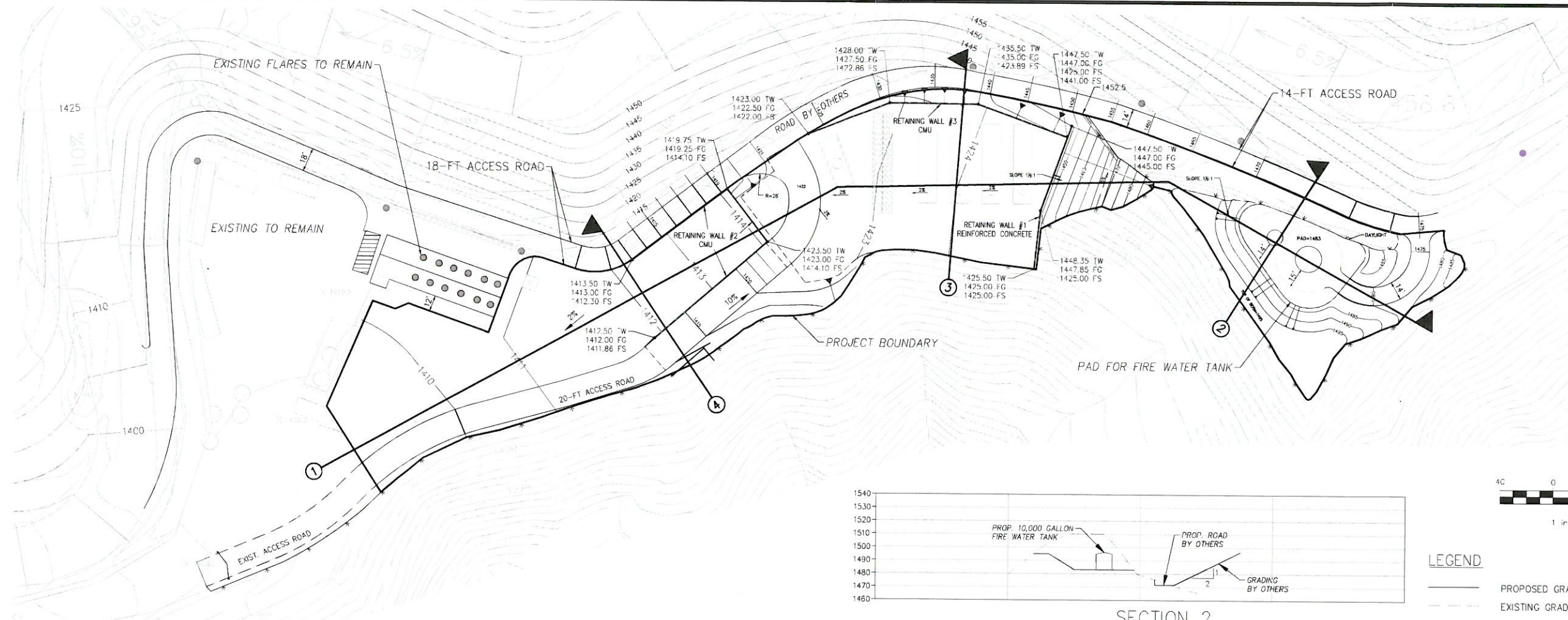
Client/Project  
City of Glendale Water and Power  
Biogas Renewable Generation Project  
SR Review

Figure No.  
**6C**

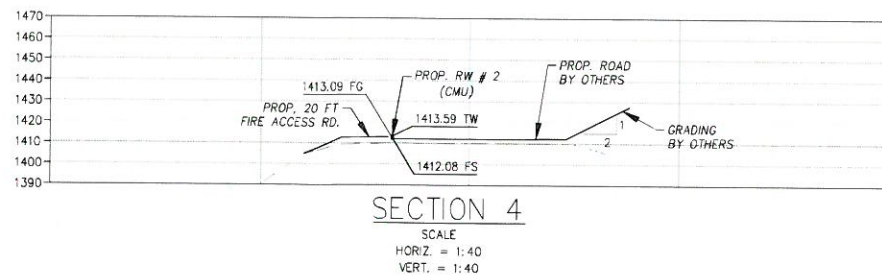
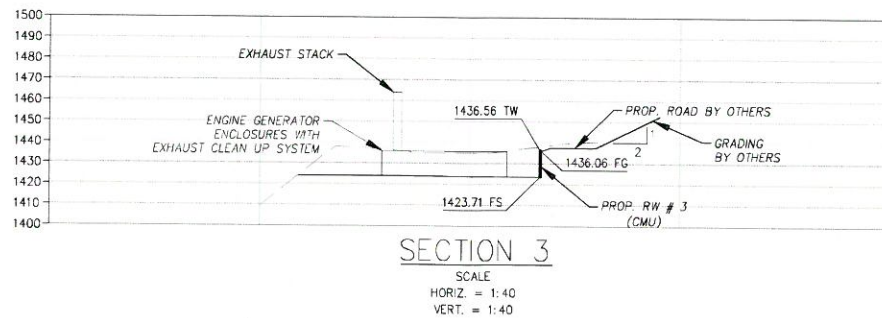
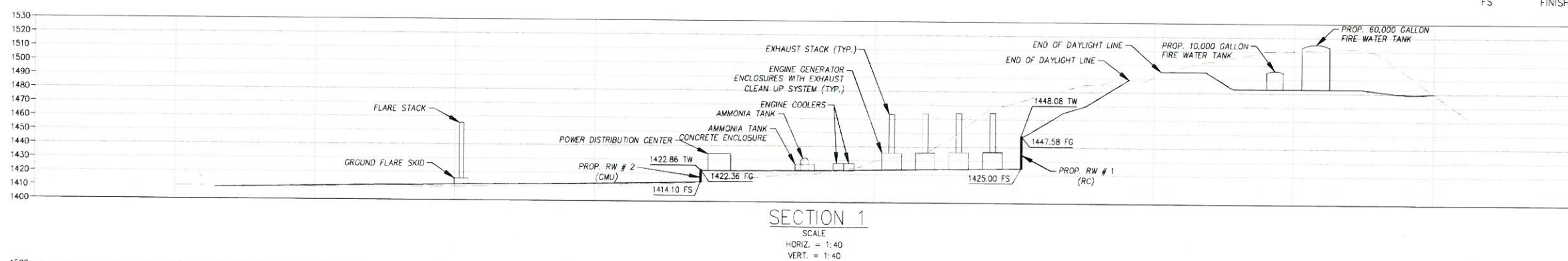
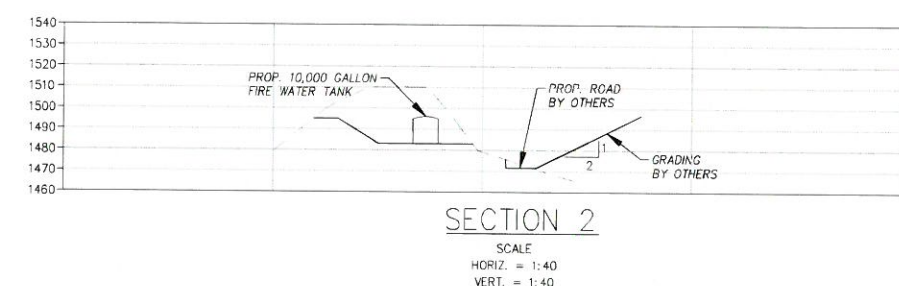
Title  
**Topographic Survey - Project Grading Plan**

Case No.





- LEGEND**
- PROPOSED GRADING
  - - - EXISTING GRADING
  - TW TOP OF WALL ELEVATION
  - FG FINISHED GRADE ELEVATION AT THE BACK OF WALL
  - FS FINISHED SURFACE ELEVATION AT THE BOTTOM OF WALL



Project Location: Glendale, CA  
Project No.: 2057123300  
Prepared on 2018-01-02

Client/Project: City of Glendale Water and Power  
Biogas Renewable Generation Project  
SR Review

Figure No.: 7  
Title: **Cross Section and Retaining Wall Plan**  
Case No.: