

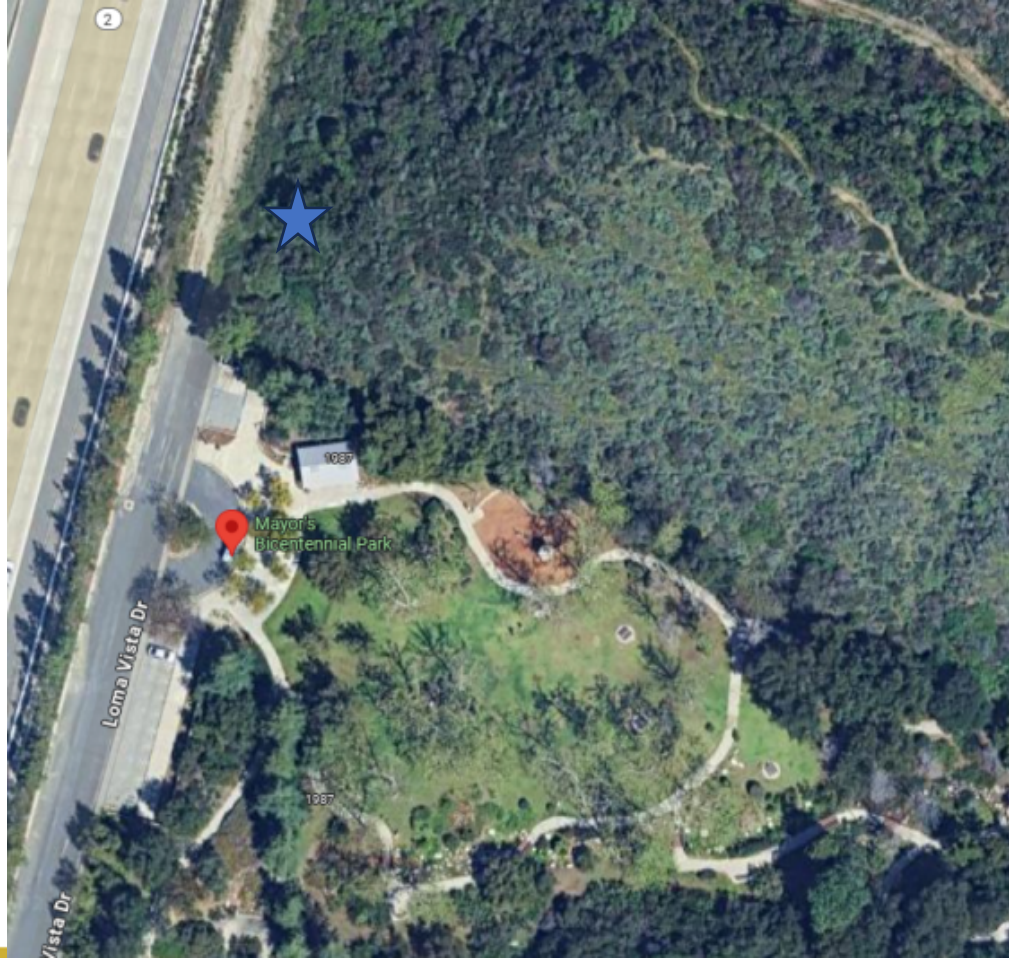


# City of Glendale

Wireless Telecommunications Facility Lease  
Agreement between the City of Glendale and  
New Cingular Wireless PCS, LLS with address of  
1880 Loma Vista Drive

---

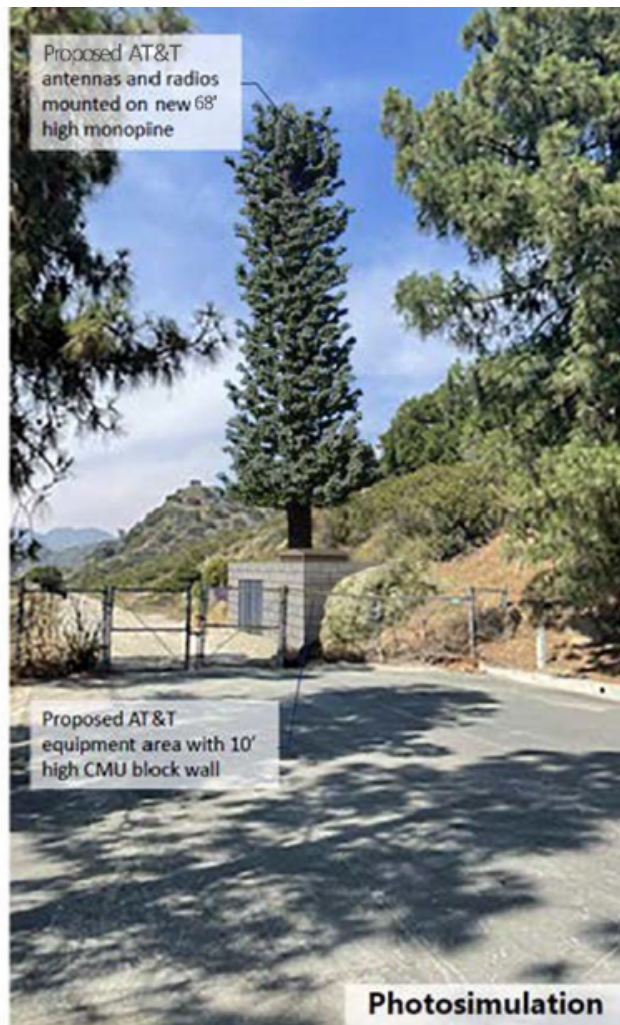
**December 3, 2024**







**Existing**



Proposed AT&T  
antennas and radios  
mounted on new 68'  
high monopole

Proposed AT&T  
equipment area with 10'  
high CMU block wall

**Photosimulation**

#### View 1

Looking north on the road 500 feet  
from the site.





# Any Questions?



## #My Glendale