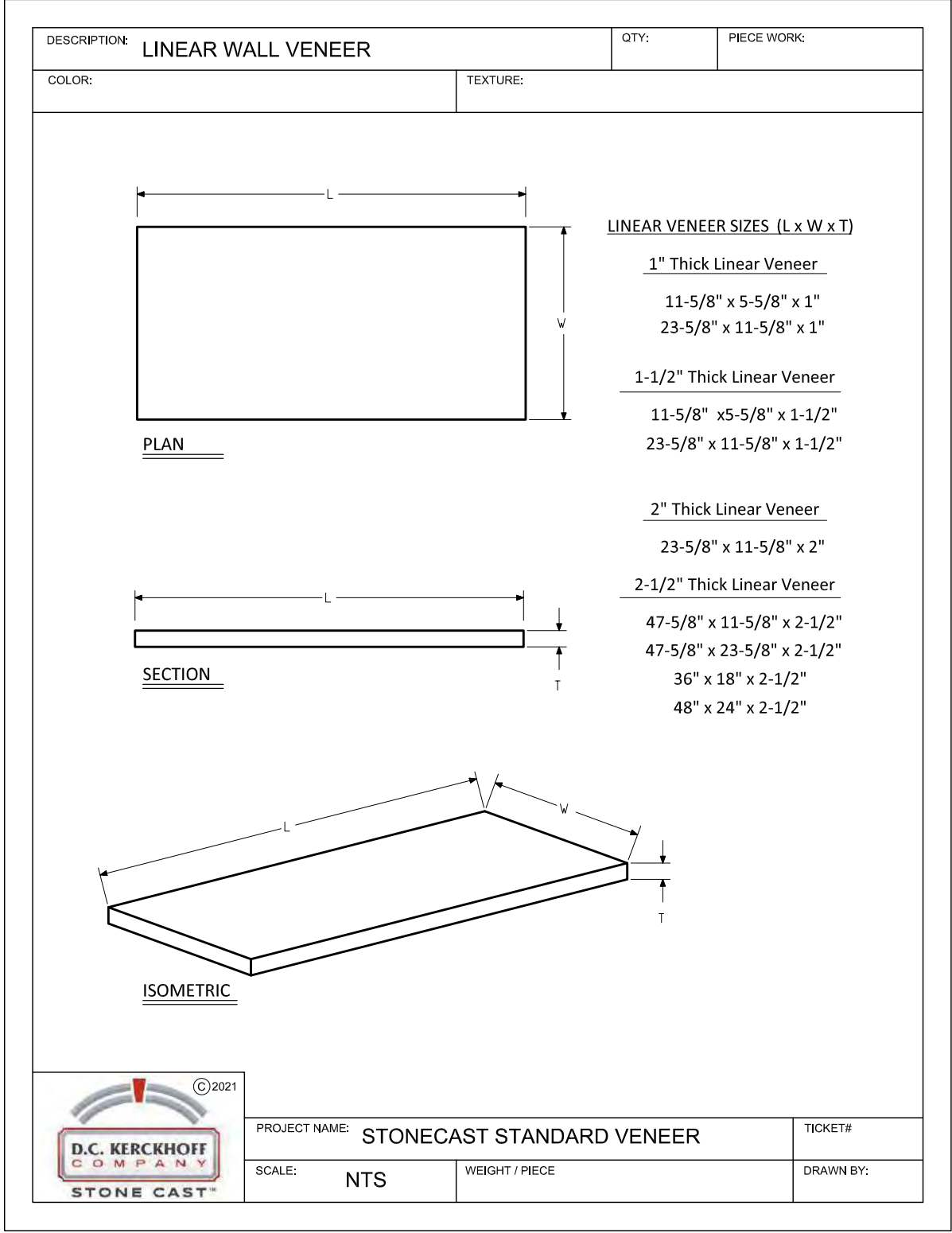
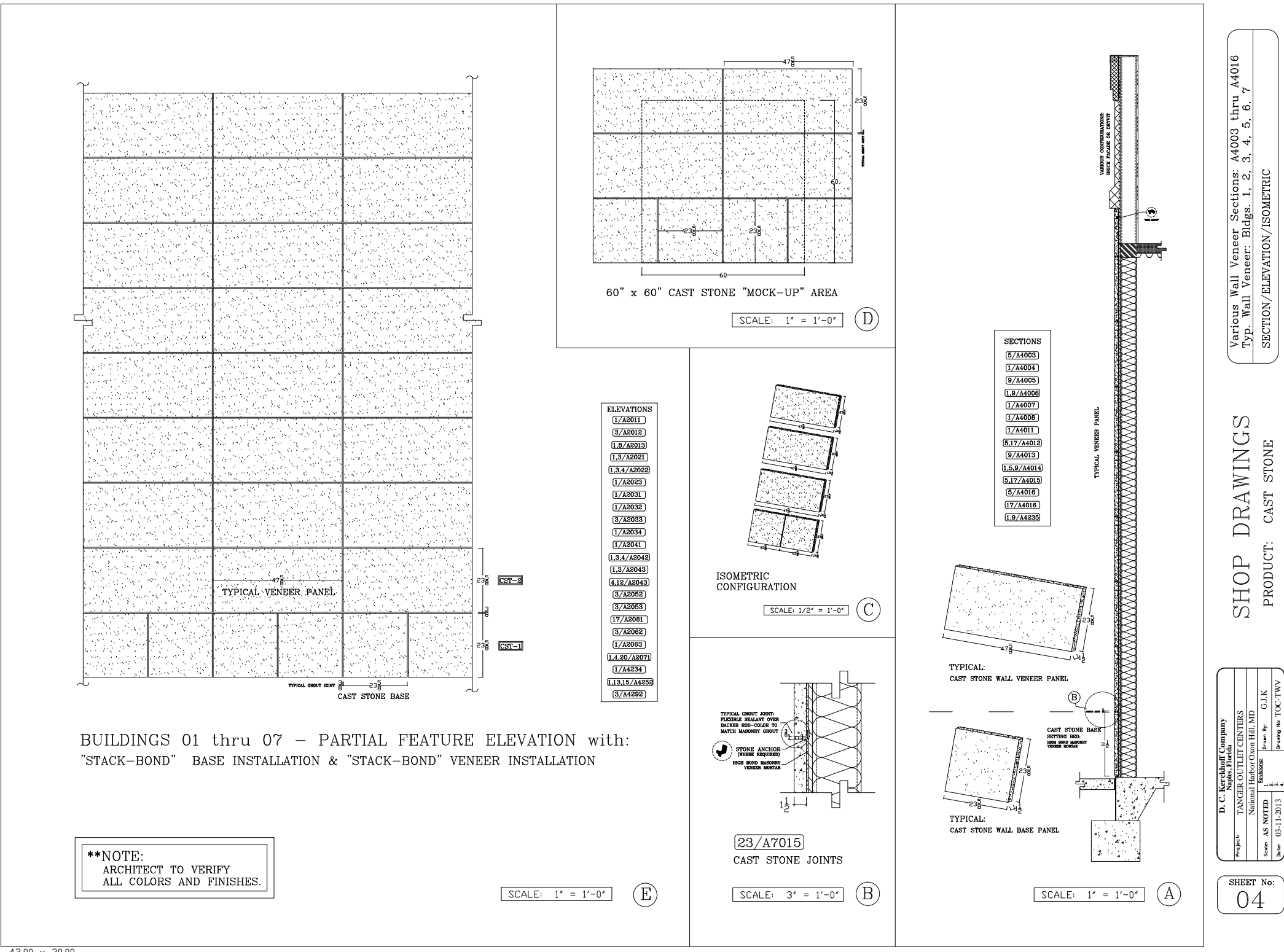


WALL MATERIAL



Linear-Wall-Veneer-min-1

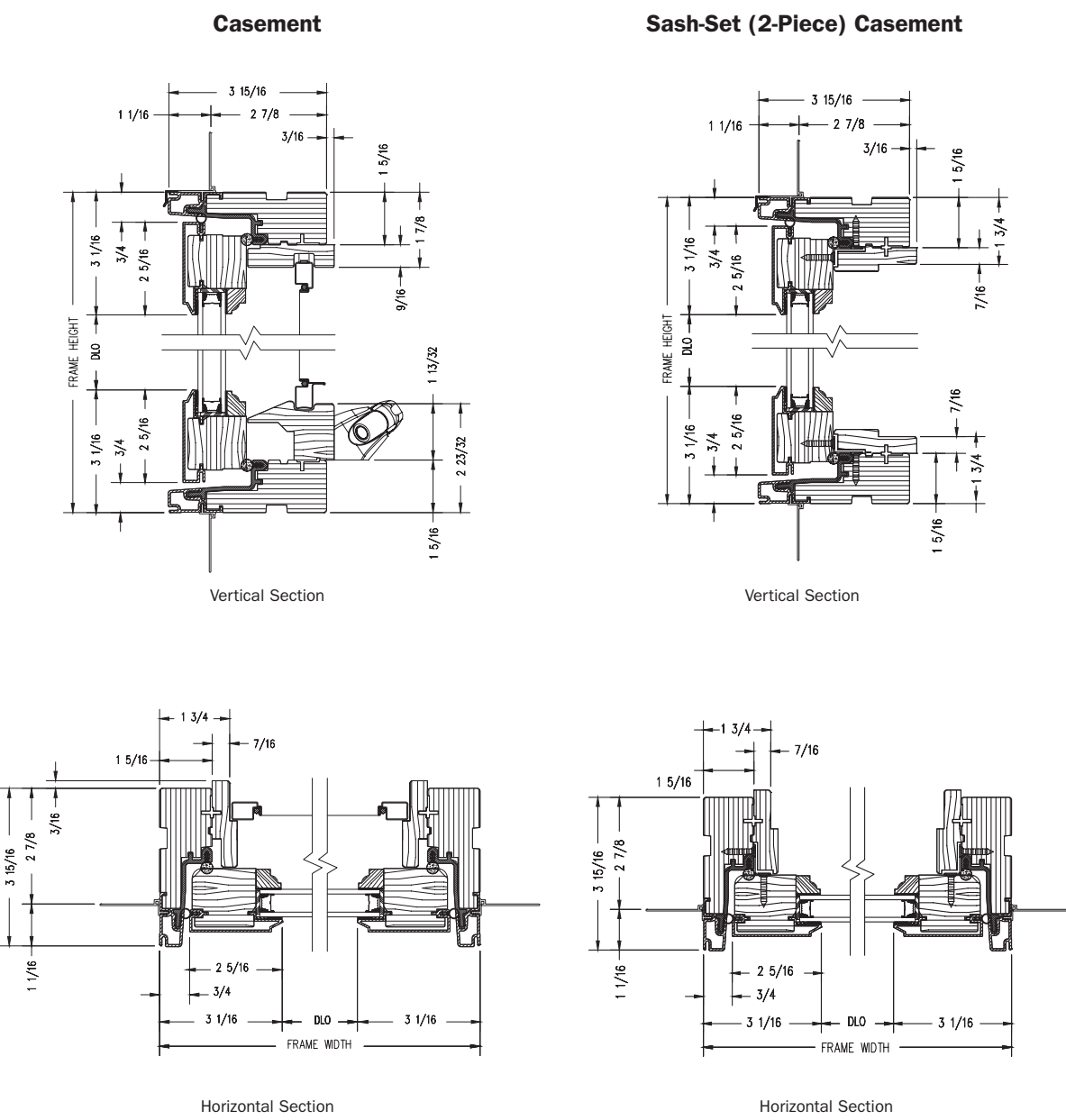


WINDOW DETAILS

E-SERIES CASEMENT WINDOWS



Casement Windows



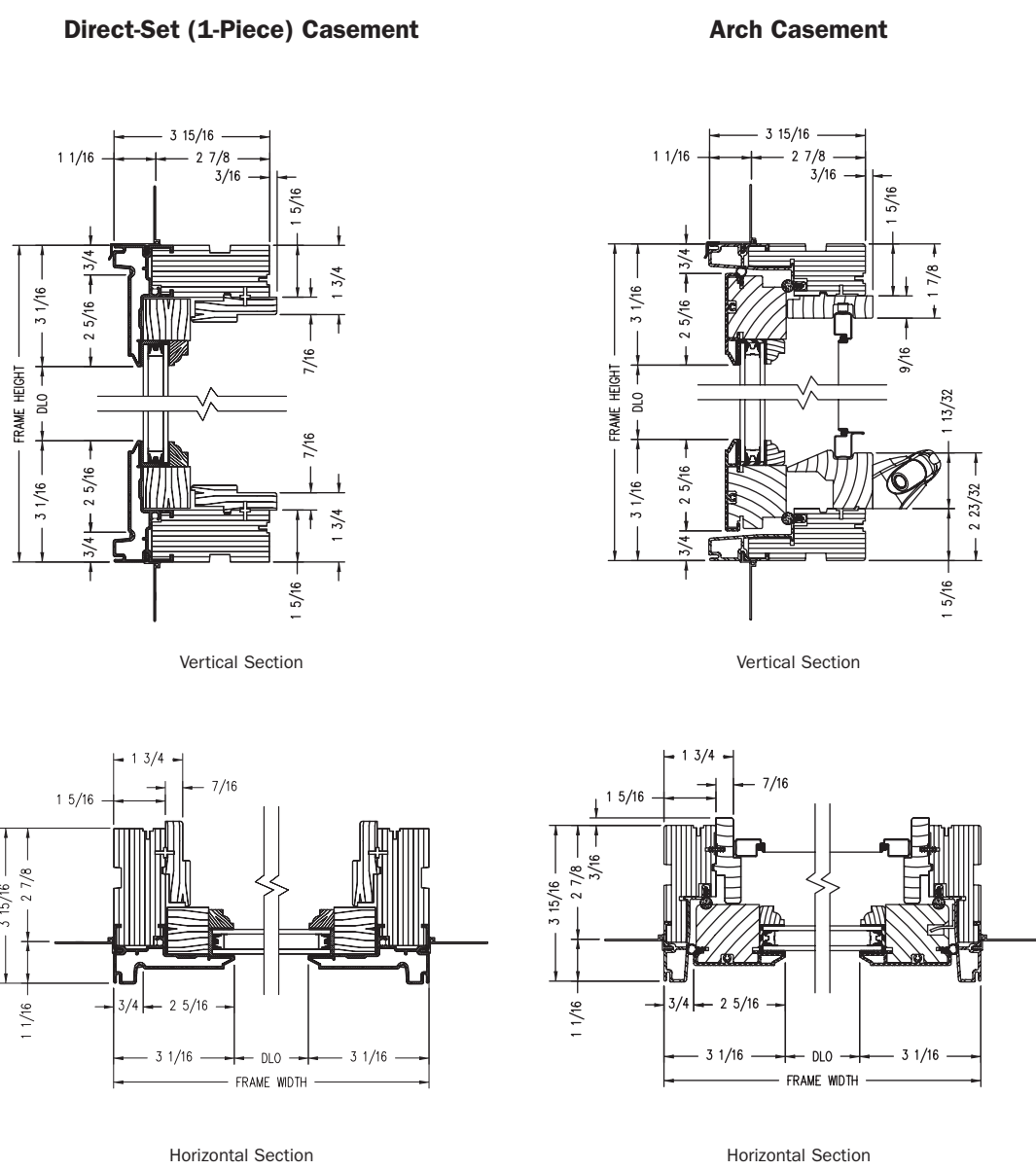
Shown with ovolo (colonial) glass stops.

PROPER INSTALLATION AND MAINTENANCE OF E-SERIES PRODUCTS IS ESSENTIAL TO ATTAIN OPTIMUM PERFORMANCE AND OPERATION. WRITTEN INSTALLATION INSTRUCTIONS THAT PROVIDE GUIDELINES FOR PROPER INSTALLATION ARE AVAILABLE BY VISITING ANDERSENWINDOWS.COM. CUSTOM SIZES ARE AVAILABLE. CONTACT YOUR LOCAL SUPPLIER FOR MORE INFORMATION. DRAWINGS ARE NOT TO SCALE.

E-SERIES CASEMENT WINDOWS



Casement Windows



Shown with ovolo (colonial) glass stops.

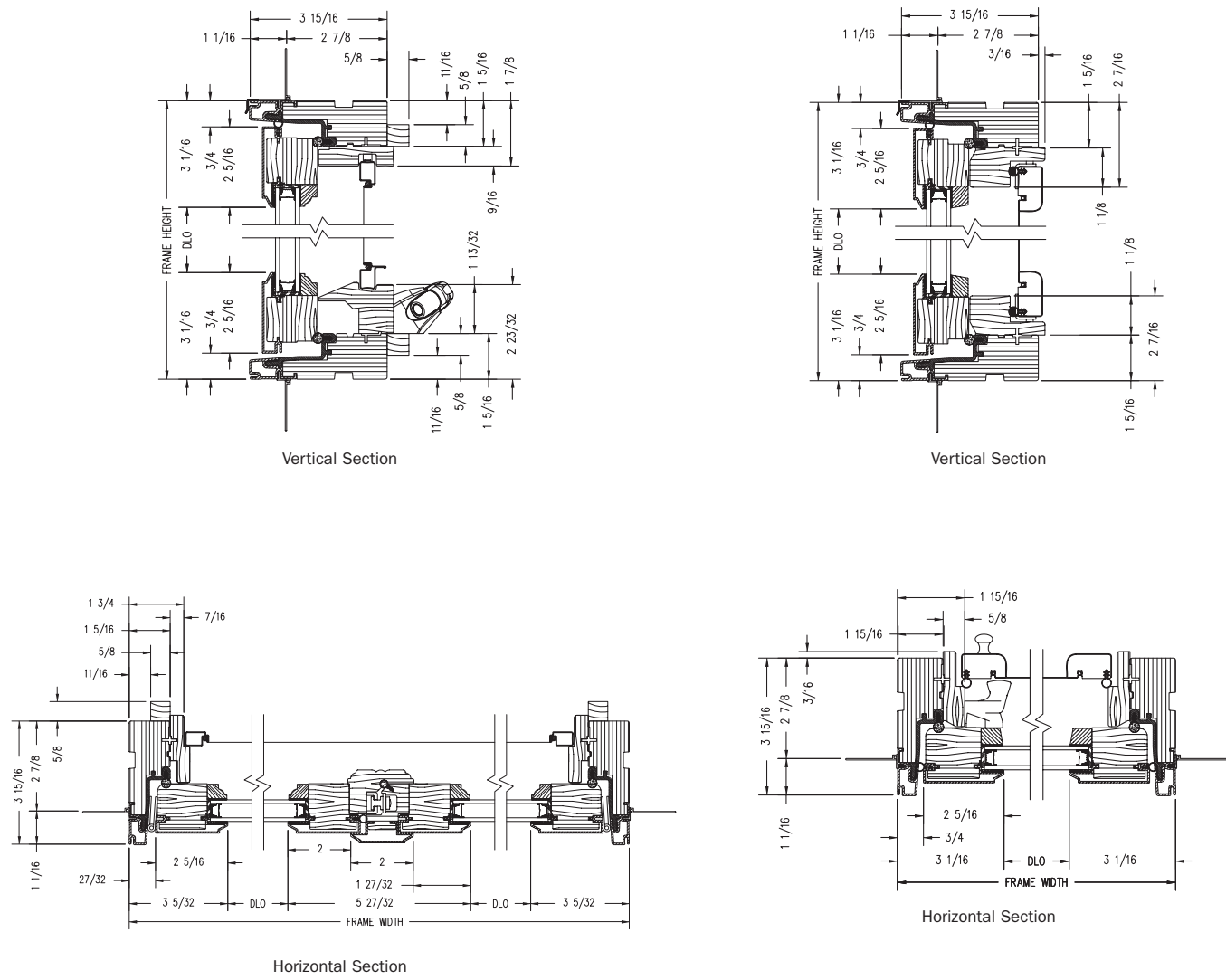
PROPER INSTALLATION AND MAINTENANCE OF E-SERIES PRODUCTS IS ESSENTIAL TO ATTAIN OPTIMUM PERFORMANCE AND OPERATION. WRITTEN INSTALLATION INSTRUCTIONS THAT PROVIDE GUIDELINES FOR PROPER INSTALLATION ARE AVAILABLE BY VISITING ANDERSENWINDOWS.COM. CUSTOM SIZES ARE AVAILABLE. CONTACT YOUR LOCAL SUPPLIER FOR MORE INFORMATION. DRAWINGS ARE NOT TO SCALE.

E-SERIES CASEMENT WINDOWS



French Casement Windows

Push Out Casement Windows



Shown with ovolo (colonial) glass stops.

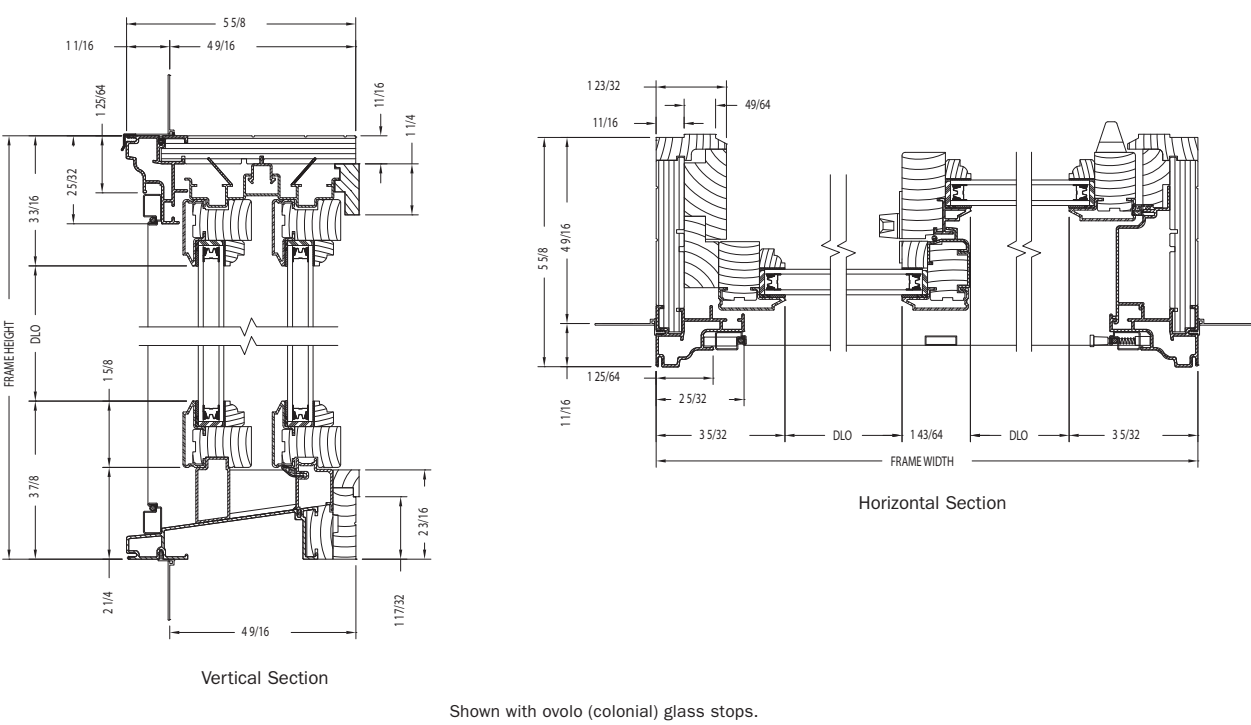
Shown with contemporary glass stops.

PROPER INSTALLATION AND MAINTENANCE OF E-SERIES PRODUCTS IS ESSENTIAL TO ATTAIN OPTIMUM PERFORMANCE AND OPERATION. WRITTEN INSTALLATION INSTRUCTIONS THAT PROVIDE GUIDELINES FOR PROPER INSTALLATION ARE AVAILABLE BY VISITING ANDERSENWINDOWS.COM. CUSTOM SIZES ARE AVAILABLE. CONTACT YOUR LOCAL SUPPLIER FOR MORE INFORMATION. DRAWINGS ARE NOT TO SCALE.

E-SERIES GLIDING WINDOWS



2-Sash Gliding Windows



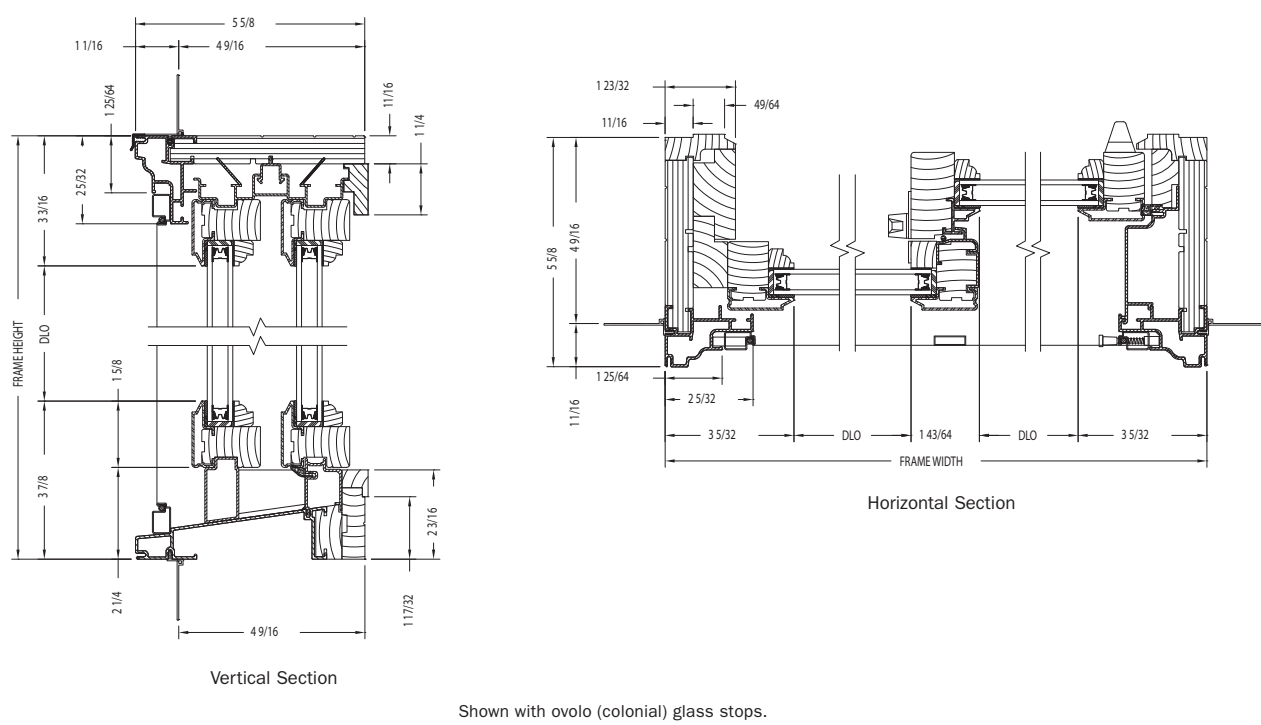
Shown with ovolo (colonial) glass stops.

PROPER INSTALLATION AND MAINTENANCE OF E-SERIES PRODUCTS IS ESSENTIAL TO ATTAIN OPTIMUM PERFORMANCE AND OPERATION. WRITTEN INSTALLATION INSTRUCTIONS THAT PROVIDE GUIDELINES FOR PROPER INSTALLATION ARE AVAILABLE BY VISITING ANDERSENWINDOWS.COM. CUSTOM SIZES ARE AVAILABLE. CONTACT YOUR LOCAL SUPPLIER FOR MORE INFORMATION. DRAWINGS ARE NOT TO SCALE.

E-SERIES GLIDING WINDOWS




2-Sash Gliding Windows



Shown with ovolo (colonial) glass stops.

PROPER INSTALLATION AND MAINTENANCE OF E-SERIES PRODUCTS IS ESSENTIAL TO ATTAIN OPTIMUM PERFORMANCE AND OPERATION. WRITTEN INSTALLATION INSTRUCTIONS THAT PROVIDE GUIDELINES FOR PROPER INSTALLATION ARE AVAILABLE BY VISITING ANDERSENWINDOWS.COM. CUSTOM SIZES ARE AVAILABLE. CONTACT YOUR LOCAL SUPPLIER FOR MORE INFORMATION. DRAWINGS ARE NOT TO SCALE.

		DATE: 06/30/2023 JOB NO: AD22-038		<div></div> <div>ART DESIGN COMPANY TEL: 818 221 53 01 WWW.ARTDESIGN.COM</div>	
		DESIGNED BY: MM CHECKED BY: AA		BY	
		DESCRIPTION		REV	
		DATE		1	
				2	
				3	
				4	
				5	
		THE ABOVE DRAWINGS AND SPECIFICATIONS AND IDEAS, DESIGNS AND ARRANGEMENTS REPRESENTED THEREBY, ARE THE PROPERTY OF ART DESIGN COMPANY, INC. AND NO PART THEREOF SHALL BE COPIED, DISCLOSED TO OR REPRODUCED IN ANY MANNER WITHOUT THE WRITTEN CONSENT OF ART DESIGN COMPANY, INC. CONTRACTORS SHALL VERIFY AND BE RESPONSIBLE FOR THE ACCURACY OF ALL DIMENSIONS AND CONDITIONS SHOWN BY THESE DRAWINGS. ANY VARIATIONS FROM THE DRAWINGS SHALL BE THE RESPONSIBILITY OF THE OFFICE FOR REVIEW BEFORE PROCEEDING WITH THE FABRICATION.			
PROJECT		FULL DEMOLITION OF 12,240 SQFT ONE STORY BUILDING, NEW CONSTRUCTION OF 5,283 SQFT 2 STORY SFD (2,907 SQFT FIRST FLOOR AND 2,376 SQFT SECOND FLOOR, IN) 544 SQFT POOL WITH 124 SQFT SPA, IN) 3,985 SQFT COVERED PATIO, IN) BBQ AREA			
JOB ADDRESS		1519 GLENMONT DR, GLENDALE, CA 91207			
CLIENT/OWNER		TIGRAN GEVORGYAN			
A-20					
SHEET NUMBER		21			

DOOR DETAILS

SERIES 3070-T

MULTI-SLIDE & POCKET DOOR

TYPICAL CONFIGURATIONS

Virtually Unlimited Multi-Slide, Pocket and Corner applications.

MAX PANEL WIDTH

MAX FRAME HEIGHT

EXAMPLE SHGC

EXAMPLE U-FACTOR

1'8"

1'12"

NFRC 0.21

S.P.A. 0.22

NFRC 0.31

S.P.A. 0.29

Elevation View: OXXX Configuration

Head

Sill

Interlockers

Lock Jamb

Fixed Jamb

*Max width and height are not necessarily available in combination.

*Specimen size: Nom. 79" x 79"

*Simulated Performance Alternative size: 120" x 144" OXXX using Cardinal 366-69/Argon glass.

SERIES 3070-T

MINIMALIST HARDWARE

The standard locking system for the 3070-T is our patented Archetype system. For those desiring even more glass, we offer the optional Archetype Narrow, which is the same latch as the Archetype but with vertical actuation and a thinner profile of 3.25".

FROST CLIMATE EXTRUSIONS

The 3070-T was designed to emulate the Series 3070, but with added accommodations for colder climates. Each aluminum extrusion includes an integral thermal barrier that reduces thermal conduction of the exterior temperature to the interior. The resulting door system boasts energy performance that complies with some of the strictest energy codes in North America and retains a highly attractive aesthetic.

ARCHE-DUCT DRAINING SYSTEM

The Arche-Duct is proprietary to Fleetwood. This system allows for flush flooring and hurricane water performance. Customers may choose a continuous track or a staggered design, as shown here. Builders appreciate the threaded drain couplings, which offer a variety of placement options.

NO POST CORNER

Custom extrusions were created to allow 90° corner doors as well as odd angle corner doors without the need for a post or jamb. The result is the strongest and most attractive corner door on the market. Imagine the accentuation of your stunning view as you maximize space and minimize barriers between the inside and outside.

8

FLEETWOOD

FLEETWOODUSA.com

9

FLEETWOOD

WINDOWS & DOORS

SERIES 3070

DWG NO.: 3070-001

DATE: 10/31/23

0 1 2 3 4 5 6

USE MAP TO SCALE DIMENSIONS IN INCHES

SCALE: 1/4"

MULTI-SLIDE DOOR DETAILS

OXXX DOOR

1 MULTI-SLIDE HEAD DETAIL

2 MULTI-SLIDE HEAD DETAIL

3 MULTI-SLIDE SILL DETAIL

4 MULTI-SLIDE HEAD DETAIL

5 MULTI-SLIDE SILL DETAIL

6 FIXED JAMB

7 INTERLOCKERS

8 LOCK JAMB

9 FIXED JAMB INTERLOCKERS

10 INTERLOCKERS

11 MEETING STILES

12 INTERLOCKERS

13 LOCK JAMB

14 LOCK JAMB

NOTE: CENTERLINES ARE NOT DIVIDED EQUALLY; CONFIRM CENTERLINES WHEN REQUIRED.

OXXX DOOR

OXXX DOOR

*NET FRAME WIDTH DOES NOT INCLUDE SILL PAN.

SILL PAN EXTENDS 1/8" BEYOND EACH JAMB.

*PLAN VIEW DOES NOT SHOW SILL RISER.

*FOR ADDITIONAL OPTIONS AND UPGRADES SEE DRAWINGS 3070-07, 3070-08 & 3070-11.

*GLASS PENETRATION: 11/16"

*EXTERIOR RATED PRODUCTS HAVE WEEP SLOTS ON HORIZONTAL SILLS.

SERIES 3070

SERIES 3070

MULTI-SLIDE & POCKET DOOR

TYPICAL CONFIGURATIONS

Virtually Unlimited Multi-Slide, Pocket and Corner applications.

MAX PANEL WIDTH

MAX FRAME HEIGHT

EXAMPLE SHGC

EXAMPLE U-FACTOR

1'10"

1'18"

NFRC 0.22

S.P.A. 0.24

NFRC 0.47

S.P.A. 0.32

Elevation View: OXXX Configuration

Head

Sill

Interlockers

Lock Jamb

Fixed Jamb

*Max width and height are not necessarily available in combination.

*Specimen size: Nom. 79" x 79"

*Simulated Performance Alternative size: 288" x 130" OXXX using SXH62/27-IS20/Argon Warm Edge glass.

SERIES 3070

CUSTOMIZABLE FEATURES

The 3070 can be customized to accommodate a wide variety of aesthetics and purposes. For example, both of the lock stile choices offer unique design and ergonomics based on our patented Archetype technology.

WEATHER RATED FLUSH SILL

The optional Arche-Duct draining system allows for a continuous finished floor, similar to the Series 3050 Hidden Track, but with tested weather performance. The staggered Arche-Duct can also achieve up to hurricane-grade water performance.

DESIGN FLEXIBILITY

Be limited only by your imagination and stay true to the design intent with virtually unlimited choices in panel arrangement. The 3070's robust offering includes: no-post inside and outside custom angle corners, pocketing systems, and traditional configurations.


10

FLEETWOOD

For jobs requiring an impact rating, Fleetwood offers the Series 3070-HI. Visit our website for more information.

FLEETWOODUSA.com

11

DATE:06/30/2023 JOB NO: AD22-038		 ARTDESIGN 6050 W 14TH AVE LOS ANGELES, CA 90044		ARTDESIGN COMPANY TEL: 818 221 53 01 WWW.ARTDESIGN.COM	
DESIGNED BY: MM CHECKED BY: AA					
BY					
DESCRIPTION					
DATE					
REV	1	2	3	4	5
THE ABOVE DRAWINGS AND SPECIFICATIONS AND IDEAS, DESIGNS AND ARRANGEMENTS REPRESENTED THEREBY, ARE THE PROPERTY OF FLEETWOOD WINDOWS & DOORS, INC. AND NO PART THEREOF SHALL BE COPIED, DISCLOSED TO OR REPRODUCED IN ANY MANNER WITHOUT THE WRITTEN CONSENT OF FLEETWOOD WINDOWS & DOORS, INC. THE WRITTEN CONSENT OF FLEETWOOD WINDOWS & DOORS, INC. IS NOT GIVEN FOR ANY REPRODUCTION OF THIS DOCUMENT FOR ANY PURPOSE OTHER THAN THAT SPECIFICALLY AUTHORIZED BY FLEETWOOD WINDOWS & DOORS, INC. IN WRITING. CONTRACTORS SHALL VERIFY, AND BE RESPONSIBLE FOR, ALL DIMENSIONS AND CONDITIONS SHOWN BY THESE DRAWINGS AND SPECIFICATIONS. ANY VARIATIONS FROM THE DRAWINGS AND SPECIFICATIONS SHALL BE THE RESPONSIBILITY OF THE USER OF THESE DRAWINGS AND SPECIFICATIONS. FLEETWOOD WINDOWS & DOORS, INC. OFFICE FOR REVIEW BEFORE PROCEEDING WITH THE FABRICATION.		FULL DEMOLITION OF 162,240 SQ FT ONE STORY BUILDING, NEW CONSTRUCTION OF 5,283 SQ FT 2 STORY SFD (2,297 SQ FT FIRST FLOOR AND 2,986 SQ FT SECOND FLOOR), (IN) 544 SQ FT POOL WITH 124 SQ FT SPA, (IN) 3,385 SQ FT COVERED PATIO, (IN) BBQ AREA		1519 GLENMONT DR, GLENDALE, CA 91207	
PROJECT	JOB ADDRESS		CLIENT/OWNER		TIGRAN GEVORGYAN
A-21					
SHEET NUMBER					
22					

