



Glendale Climate Action and Adaptation Plan

City Council Meeting
August 22, 2024



What is a Climate Action and Adaptation Plan (CAAP)?



Climate Action & Adaptation Plan

- Framework for community and environmental health
- A roadmap for increasing community resilience to extreme weather, like heatwaves and wildfires, improve air quality, and reduce greenhouse gas emissions
- A plan that reflects the diverse voices of the community

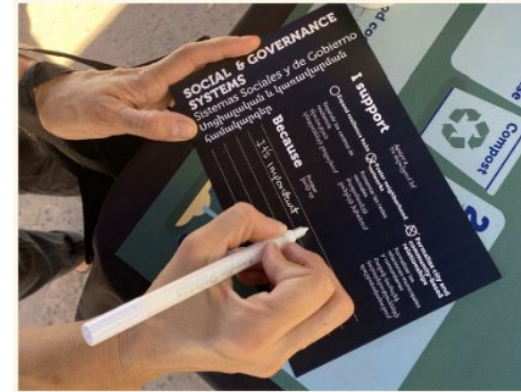


Why Develop a CAAP?



Climate Action & Adaptation Plan

- Plan to Protect Human and Environmental Health
- Provides Health and Safety Benefits
- Building a Resilient Community
- Aligns with State Regulations
 - SB 32, AB 1279, SB 100, SB 1383, etc.



Risks of Climate Change: What's at Stake?



Climate Action & Adaptation Plan

- Human health and loss of life
 - 5,000+ hospitalizations, nearly 10,600 emergency department visits, more than 138,000 outpatient visits and nearly 344 adverse birth outcomes
 - Thousands of people have died due to extreme heat in California over the past decade
 - Effects of extreme heat are disproportionately borne by low-income communities, older adults and outdoor workers
- Economic Impact \$7.7 billion dollars over 10 years
 - Lost wages and productivity
 - Agricultural and manufacturing disruptions
 - Power outages
 - Infrastructure damage

CEQA Qualified CAAP



Climate Action & Adaptation Plan

- A CEQA qualified CAAP is one that meets Senate Bill 32 so that future development projects requiring environmental review under State law can **streamline greenhouse gas impact analyses by demonstrating consistency with the CAAP.**

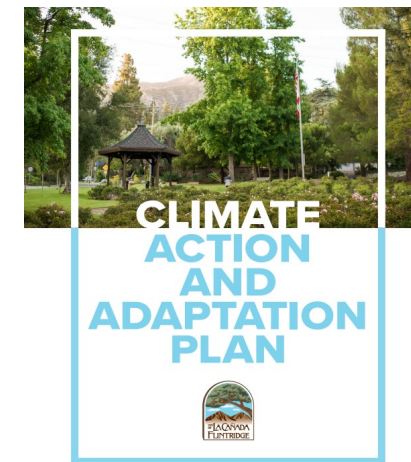
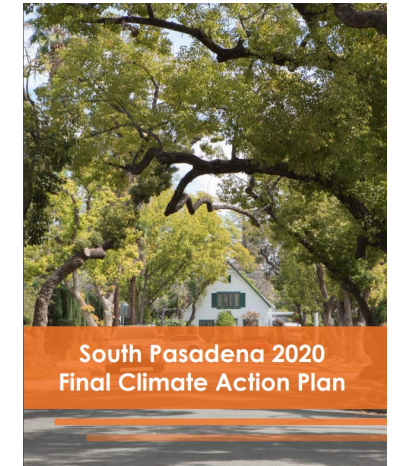
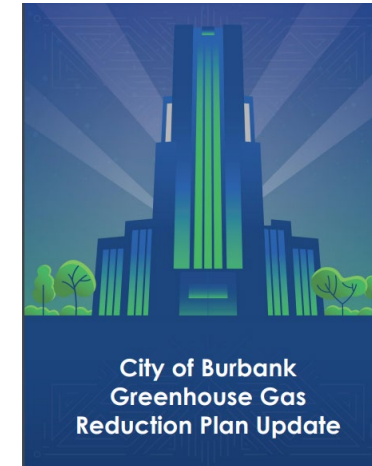


Climate Planning in Surrounding Cities



Climate Action & Adaptation Plan

- City of Burbank Greenhouse Gas Reduction Plan
- South Pasadena Climate Action Plan
- Pasadena Climate Action Plan
- Santa Monica Climate Action & Adaptation Plan
- La Cañada Flintridge Climate Action Plan
- Camarillo Climate Action Plan

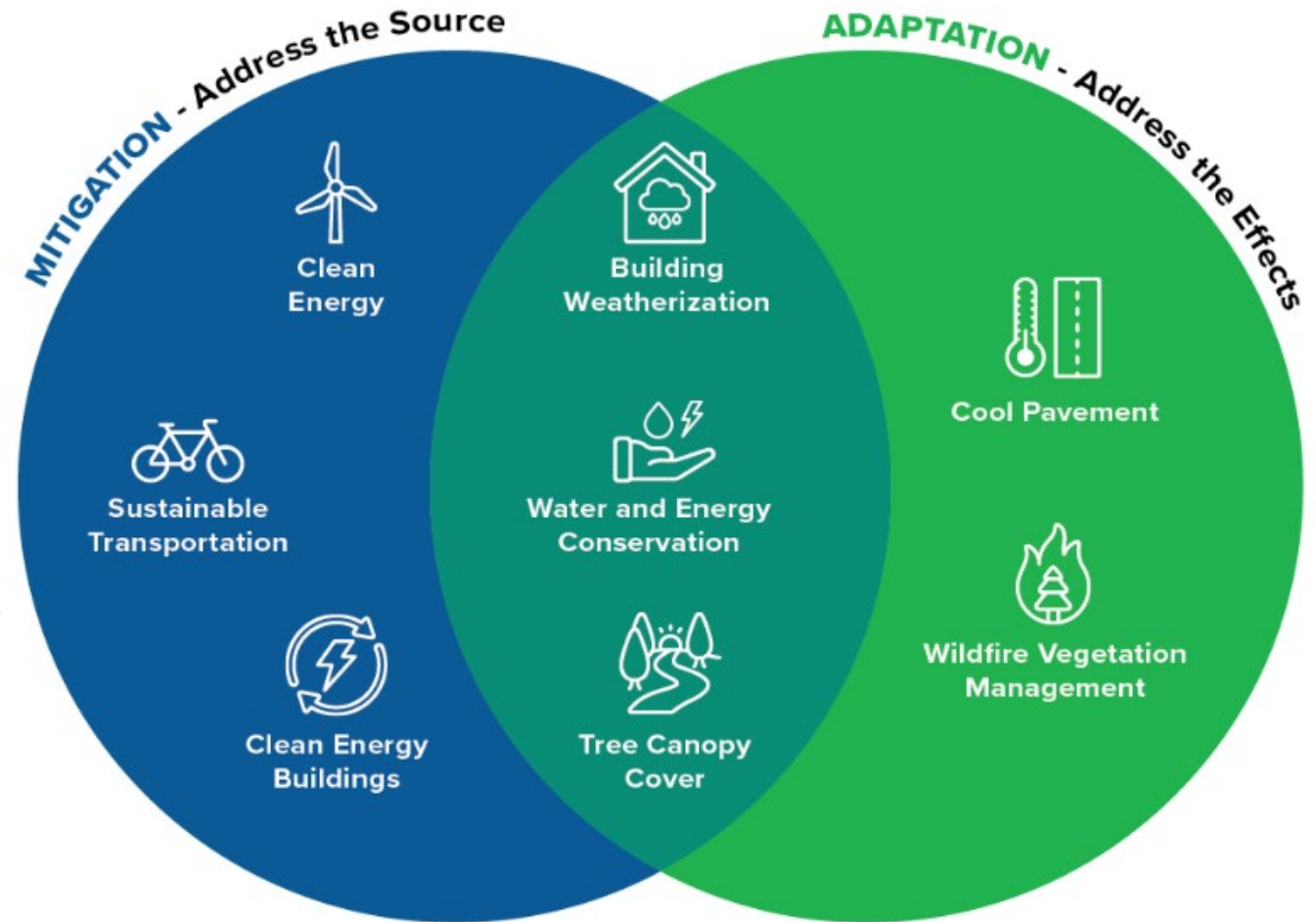


CAAP Project Overview



Climate Action & Adaptation Plan

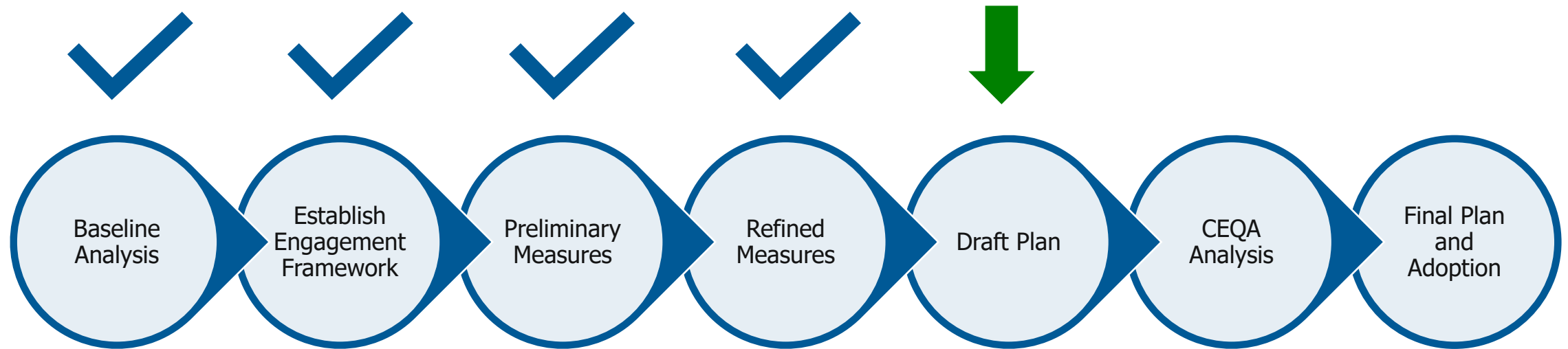
- Identify and assess the potential impacts of climate change
- Establish goals and actions that:
 - Reduce greenhouse gas emissions (climate mitigation)
 - Build resilience and adapt to the inevitable impacts of climate change (climate adaptation)
- Integrate the diverse voices of the community and remove hurdles



CAAP Process Overview



Climate Action & Adaptation Plan

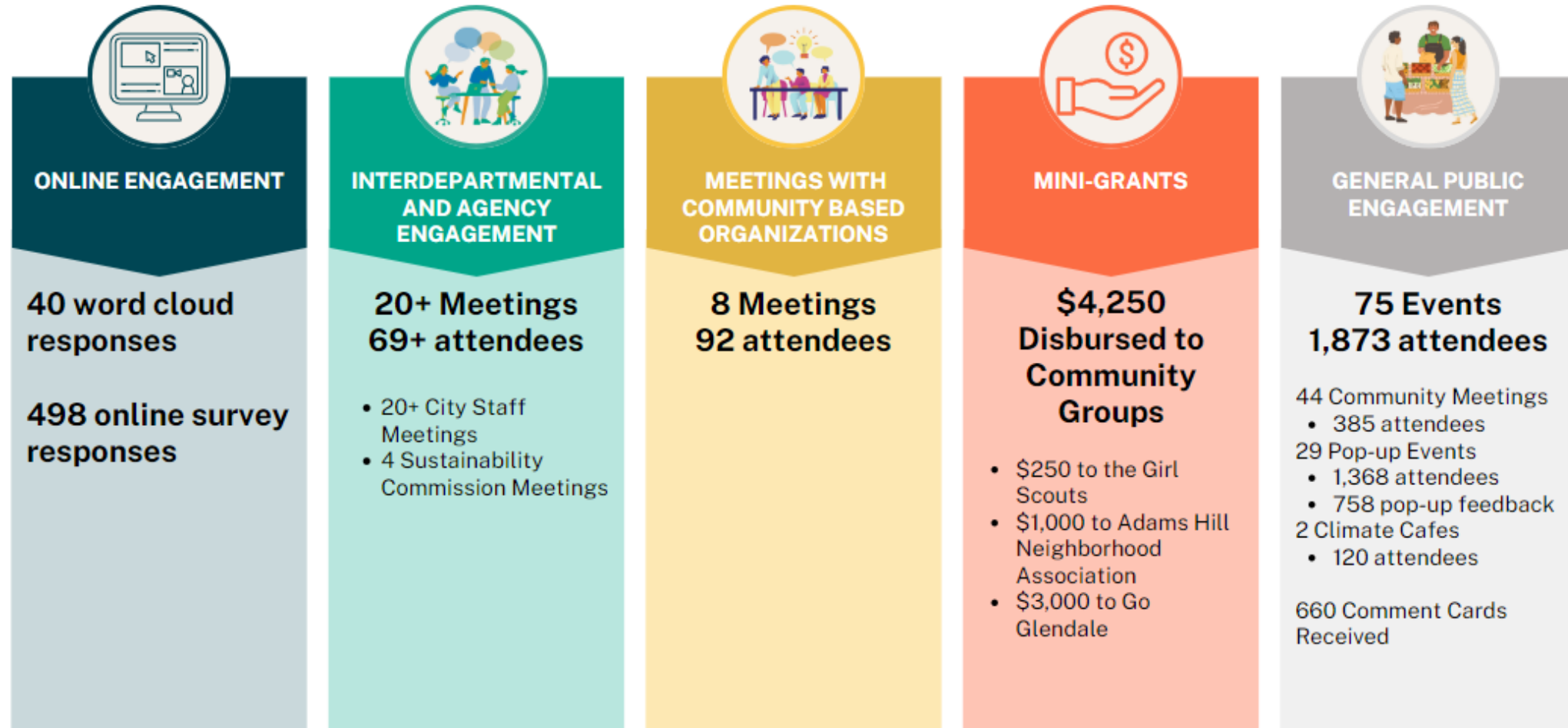


Public, Sustainability Commission, Community-Based Organizations, and City Staff feedback collected and incorporated throughout!

CAAP Engagement By the Numbers



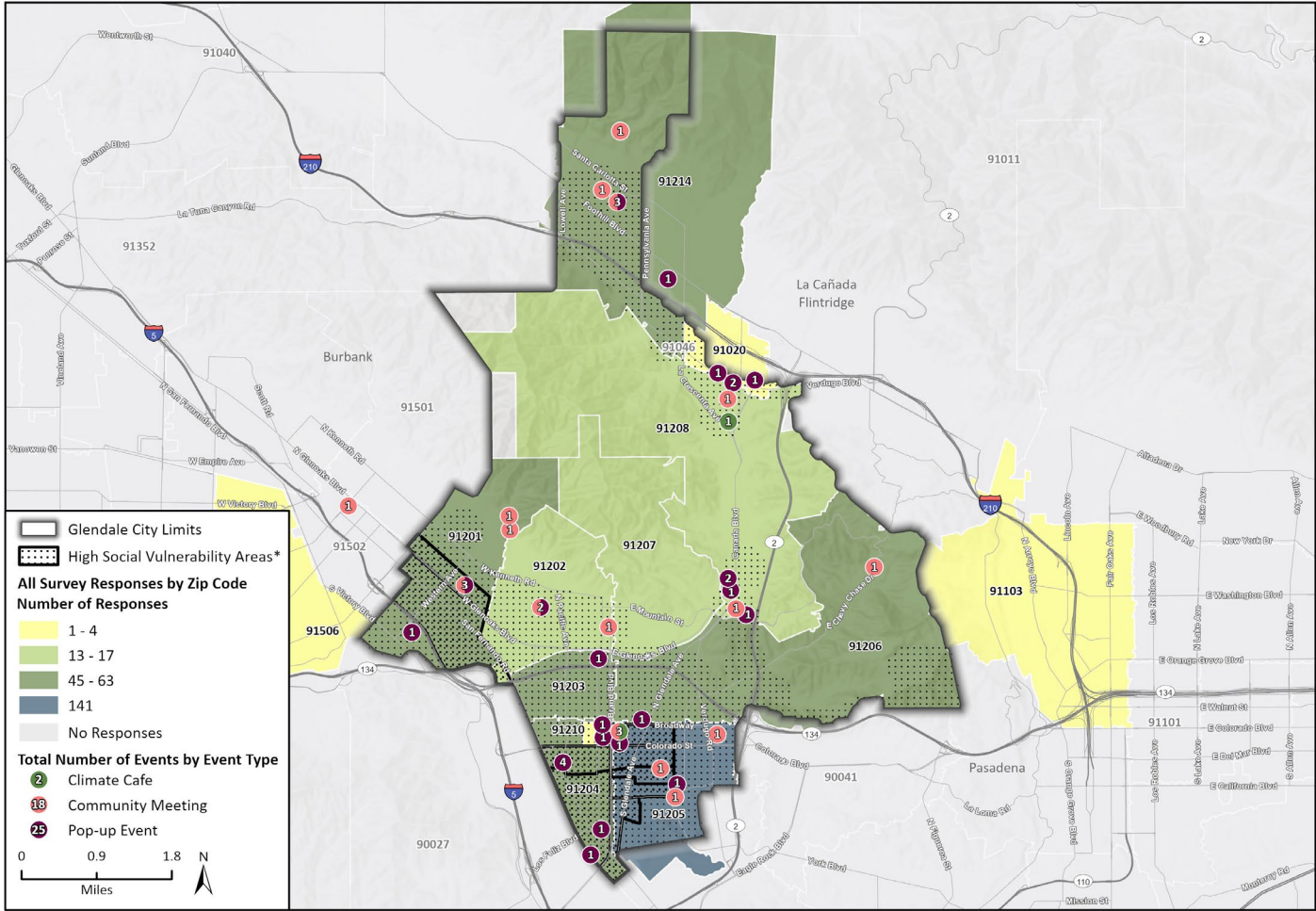
Climate Action & Adaptation Plan



CAAP Engagement By Location



Climate Action & Adaptation Plan

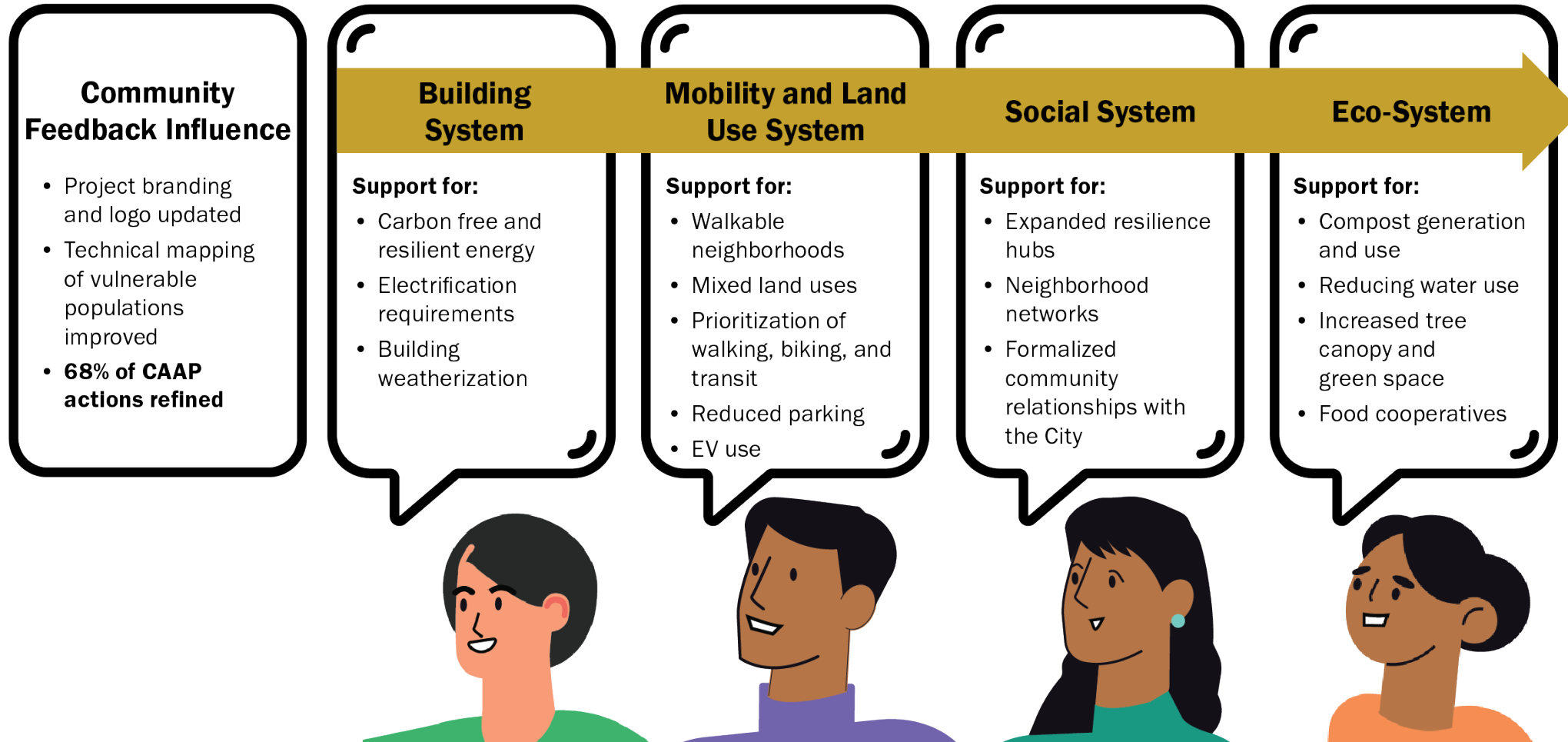


Base map provided by Esri and its licensors © 2024. Additional data provided by Esri Updated Demographics, 2022; U.S. Census Bureau, (ACS 2017-2021), 2020; CDC, 2010; LEAD tool, 2018.
* Census tracts that are above the 60th percentile are considered a High Social Vulnerability Area.

Highlights of What We Heard



Climate Action & Adaptation Plan



CAAP Structure - Systems Approach



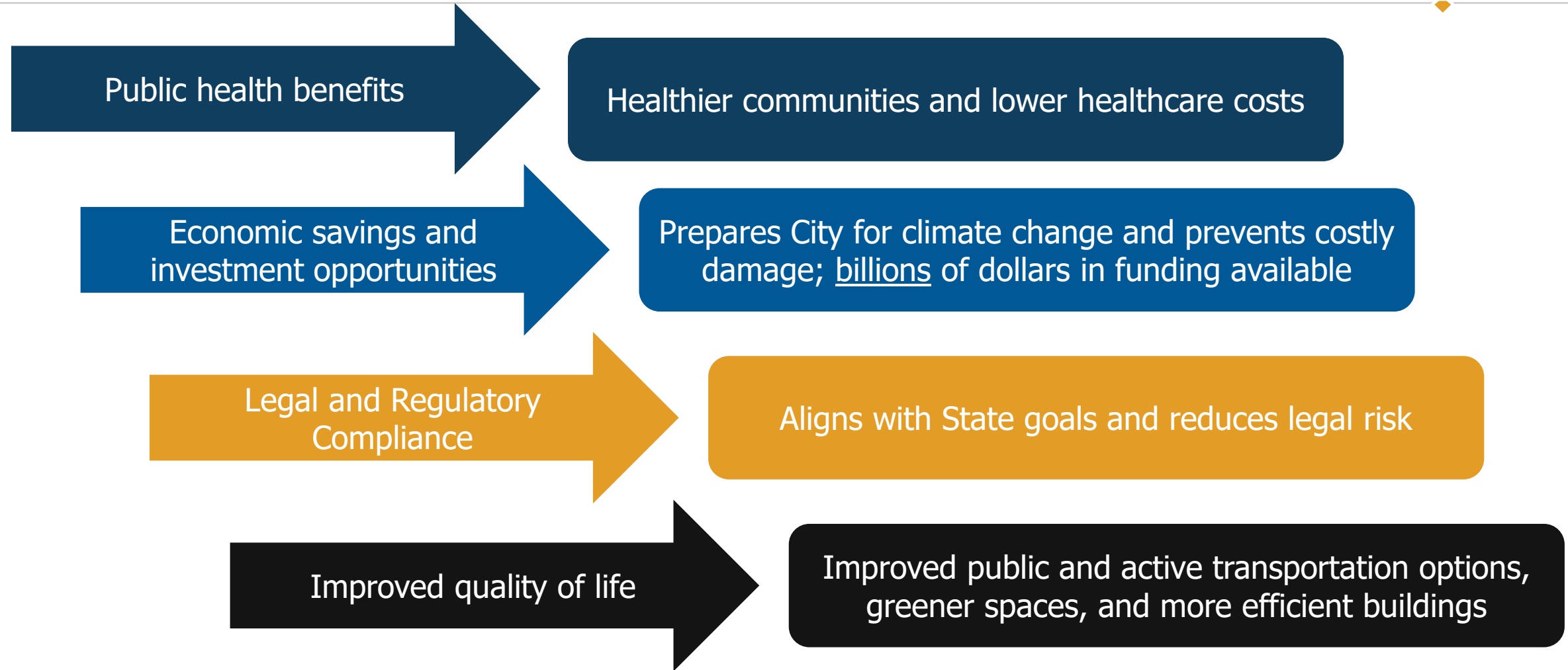
Climate Action & Adaptation Plan



Act Today, Protect Tomorrow



Climate Action & Adaptation Plan



Next Steps



Climate Action & Adaptation Plan

- Funding Matrix (in progress)
- Draft and Final CAAP document and CEQA in Fall/Winter 2024
- Bi-annual Status Updates to City Council
- CAPDash - public-facing dashboard



Thank you for your time!

*Please contact: David Jones,
DJones@Glendaleca.gov
with any follow-up questions or thoughts!*



Appendix Slides



Building on Our Existing Plans



Climate Action & Adaptation Plan

- GWP Integrated Resource Plan (IRP)
- GWP Strategic Plan
- GWP Turf Replacement Program
- Bicycle Transportation Plan
- Be Street Smart Glendale
- Glendale Safe and Healthy Streets Plan
- Glendale Citywide Pedestrian Plan
- Vision Zero Pedestrian Plan
- General Plan Circulation Element
- General Plan Safety Element
- Glendale Narrows Riverwalk Master Plan
- Glendale Water and Power Electric Vehicle Navigator Program
- Economic Development Strategic Plan
- Wildfire Mitigation Plan
- Community Forest Management Plan (Draft)
- Solar and Energy Storage Plan
- Clean Energy Resolution
- Recycling Center Master Plan
- Zero Waste Action Plan
- Glendale Edible Food Recovery Program
- Citywide Emergency Plan
- Urban Water Management Plan
- Recycled Water Master Plan
- Glendale Green Business Program
- Greener Glendale Plan - community activities
- Greener Glendale Plan - municipal operations
- Green Building Standards
- Glendale Downtown Specific Plan
- Pedestrian Plan
- Safe & Healthy Streets Plan
- Zero Waste Action Plan
- No Water Waste Policy, Chapter 13.36 of the Glendale Municipal Code
- Converting Glendale Street Lights To LED

Cost Considerations



- Upfront versus lifecycle costs
 - E.g., cost of buying an LED light bulb versus the costs of purchasing, operating, maintaining, and ultimately disposing of that lightbulb. LED lightbulbs may be more expensive upfront, but their lifecycle costs are significantly lower.
- Incremental or marginal costs
 - E.g., a new electric vehicle could cost \$30,000, however, the marginal cost of purchasing an electric vehicle versus a new internal combustion vehicle may be zero or near zero because of long-term operating and maintenance costs (no fluids to replace fewer moving parts like transmission, less brake wear).
- Financing – leveraging the time value of money
 - E.g., Cost of a solar array may cost \$20,000 and result in an energy bill that is \$200 less per month. A loan for a solar array requires a monthly payment of \$150/month, resulting in a net monthly savings in \$50.
- The Cost of Inaction
 - Cost of inaction is not \$0. Estimates show hundreds of trillions of dollars in losses.

Cost of Inaction



Climate Action & Adaptation Plan

nature

[nature](#) > [scientific reports](#) > [articles](#) > [article](#)

Article | [Open access](#) | Published: 08 June 2020

Assessing the costs of historical inaction on climate change

[Benjamin M. Sanderson](#)  & [Brian C. O'Neill](#)

[Scientific Reports](#) **10**, Article number: 9173 (2020) | [Cite this article](#)

25k Accesses | **30** Citations | **363** Altmetric | [Metrics](#)

Abstract

We consider alternative history scenarios in which explicit climate mitigation begins before the present day, estimating the total costs to date of delayed action. Considering a 2(1.5) degree Celsius stabilization target, peak costs are greater and reached sooner with a later start to mitigation, reaching 15(17)% of global GDP in 2085(2070) for a 1990 start and 18(35)% in 2080(2035) for a 2020 start. Further mitigation delay costs a best estimate of an additional 0.5(5) trillion dollars per year. Additional simulations show how optimal mitigation pathways evolve without imposing a warming limit, finding that median abatement levels and costs are not strongly dependent on start date. However, whereas 18(5) percent of optimal solutions starting in 1980 meet the 2(or 1.5) degree target, 5(or 0)% of 2020 simulations meet the goals. Discounted damages due to delayed mitigation action rise by 0.6 trillion US dollars per year in 2020.

Forbes

FORBES > INNOVATION > SUSTAINABILITY

Climate Inaction Could Cost \$1,266 Trn, As US Pushes Back On Reporting

Felicia Jackson Contributor 

I write about innovation, finance, energy, climate and sustainability.

[Follow](#)



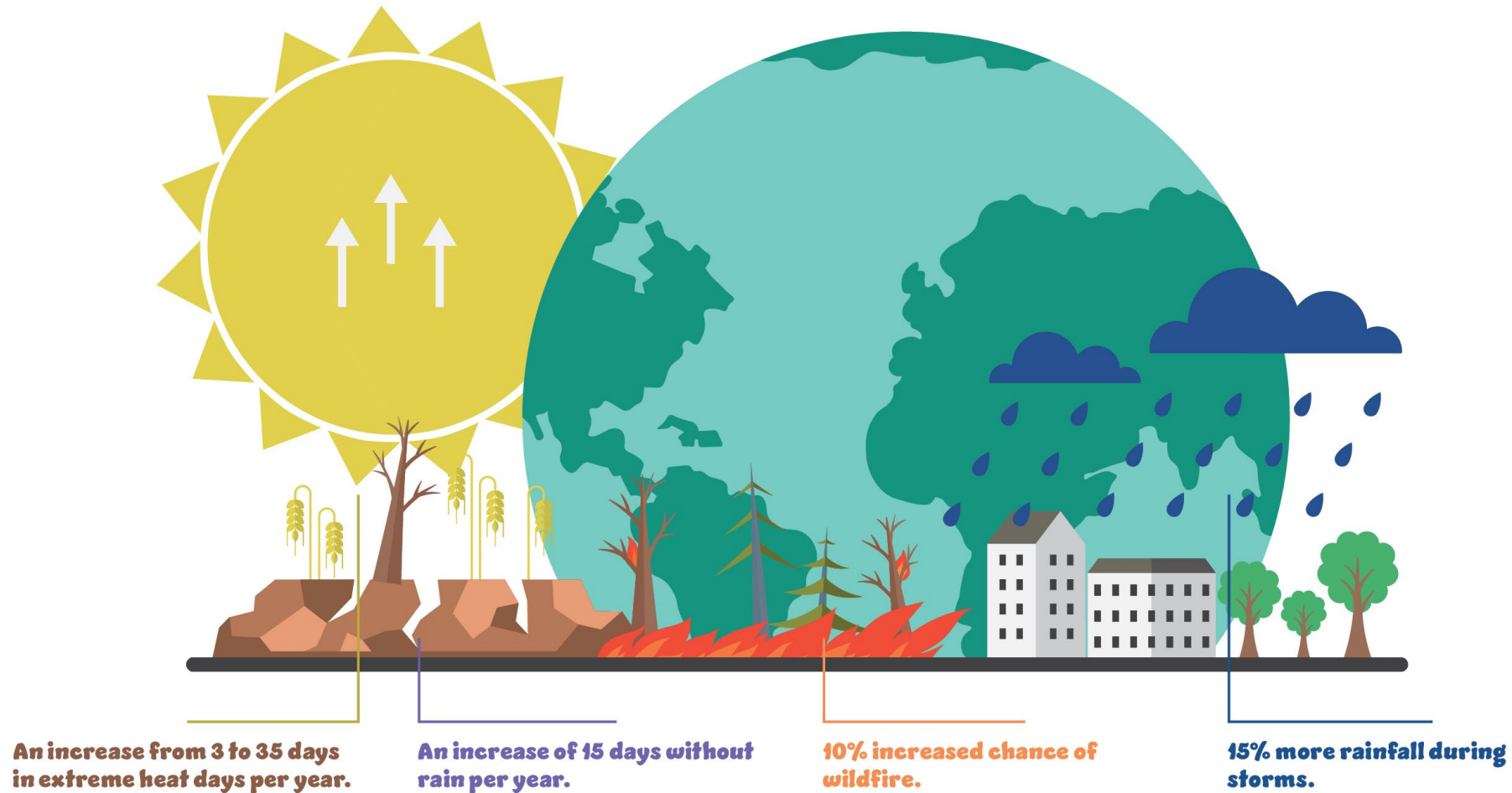
Mar 20, 2024, 07:54am EDT

“Aggregating over the period 2025-2100, the total cost of inaction is estimated at \$1,266 trillion; that is, the difference in losses under a business-as-usual scenario and those incurred within a 1.5°C pathway. This figure is, however, likely to be a dramatic underestimate.”

Climate Change Vulnerabilities



Climate Action & Adaptation Plan

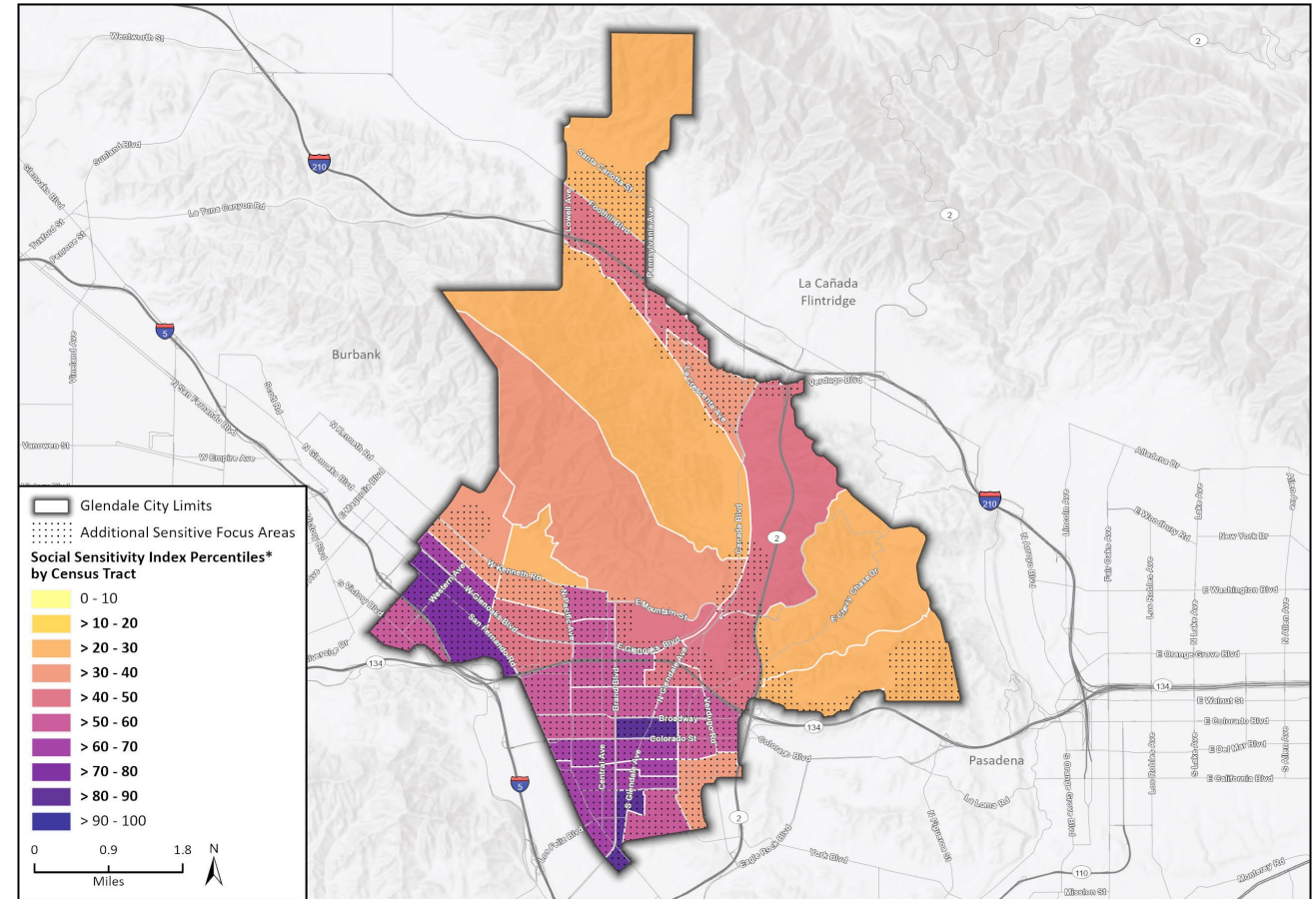


Vulnerable Populations

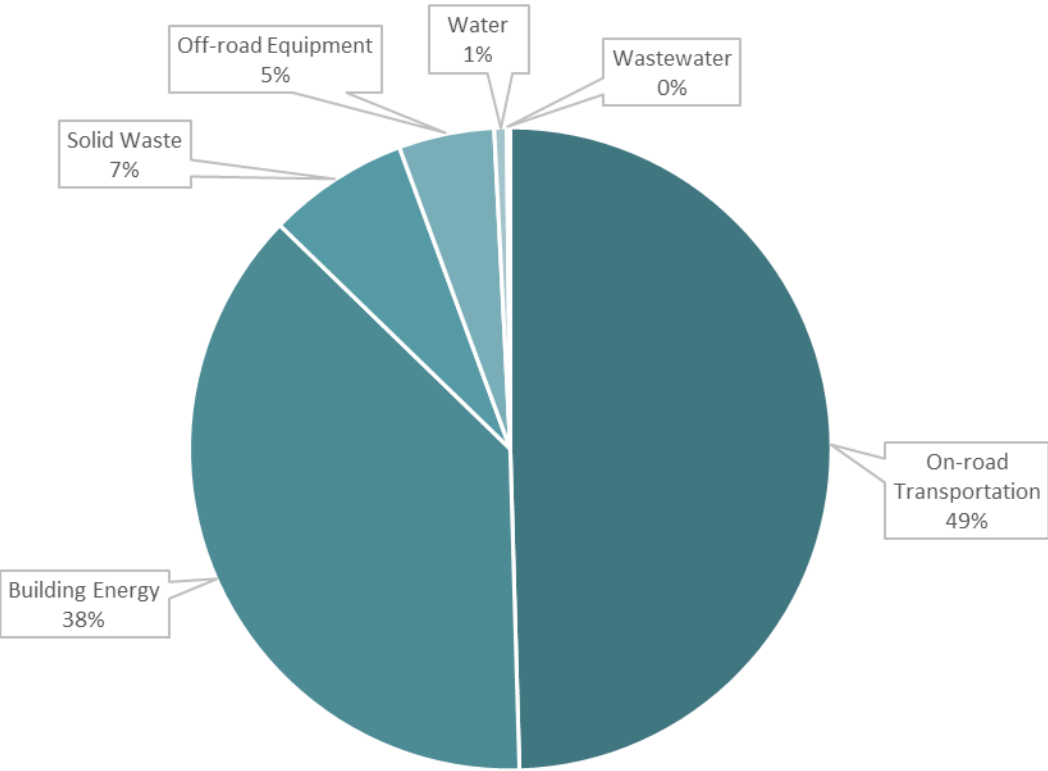


Climate Action & Adaptation Plan

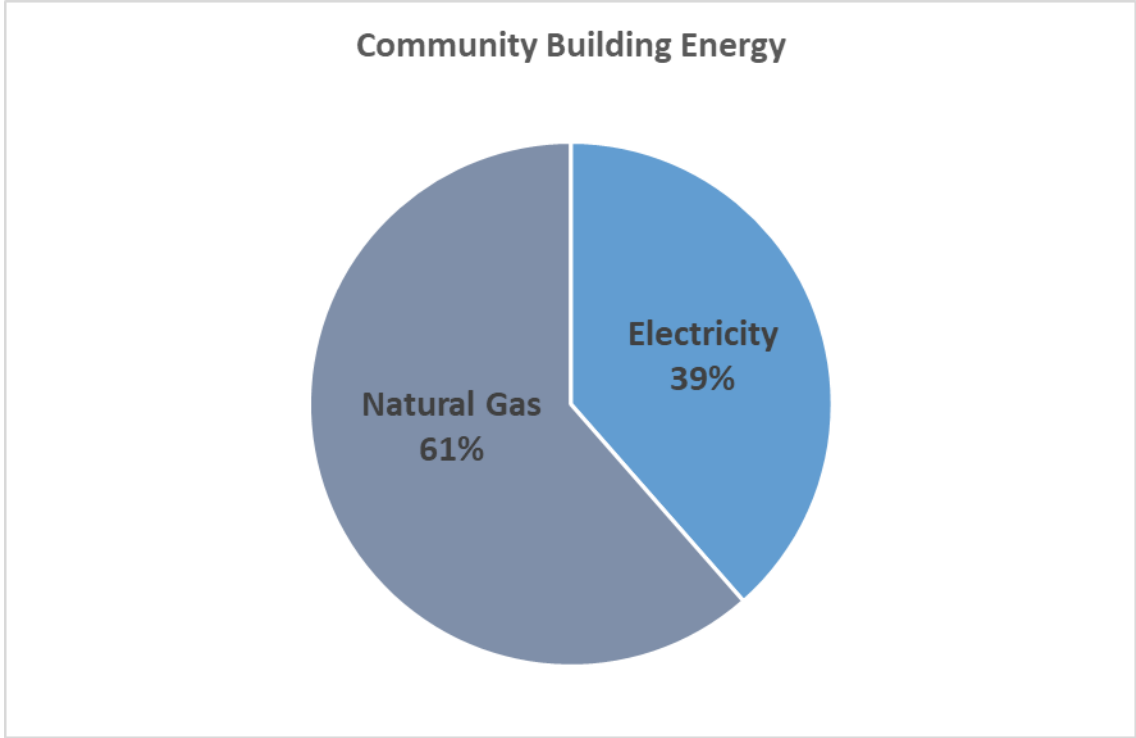
- Vulnerable Populations Map
 - Data from Census and Center for Disease Control and Prevention (CDC) and refined using Focus Group Feedback
 - Shows areas in the City that have high proportions of environmentally-sensitive residents



2021 Community Inventory



Note:
On-road transportation includes fossil-fuel powered cars, trucks, transit vehicles, and motorcycles
Off-road equipment includes construction, lawn, and all terrain vehicle



What is the Social and Governance System?



Climate Action & Adaptation Plan

- The systems the City puts in place for implementing the plan
- Alerts and communication
- Government services and social cohesion, how community members interact and look after each other

Social and Governance System



Climate Action & Adaptation Plan

Measure ID	Measure Text
Social and Governance System	
SG-1	Provide evacuation and health alert messaging in English, Spanish, Armenian, and Korean, and in multiple forms (e.g., online, brochure, radio) to amplify the Glendale community's awareness of extreme weather and events (including wildfires, landslides, extreme heat events, and poor air quality days).
SG-2	Establish three resilience centers by 2030 in high social sensitivity areas that provide refuge for vulnerable populations from poor air quality and extreme heat conditions that serve as year-round community resource centers.
SG-3	Change internal protocols and procedures to incorporate a climate and equity lens into all government operational decision-making to increase investments in CAAP implementation for vulnerable populations.
SG-4	Formalize City and community-based relationships to create meaningful and long-lasting relationships with non-profit organizations and increase engagement of vulnerable communities and Tribal governments in local government decision-making processes.
SG-5	Increase community capacity to better withstand climate shocks and stresses.

What is the Building System?



- The buildings where we live, work, and play
- The energy those buildings consume for heating, cooling, cooking, and more
- How well prepared those buildings are for tomorrow's climate
 - Extreme Temperatures
 - Flooding
 - Fire
 - Air Quality

Building System



Climate Action & Adaptation Plan

Measure ID	Measure Text
Building System	
BLD-1	Increase carbon-free electricity procurement to provide 100% carbon-free electricity community-wide by 2035 and improve electrical system resiliency through additional distributed energy resources, transmission capacity, and demand response.
BLD-2	Require healthy, safe, decarbonized, and resilient new buildings by 2026.
BLD-3	Retrofit 25% of existing buildings by 2030 and 95% by 2045 to be zero-carbon and resilient to extreme heat and wildfires.
BLD-4	Decarbonize and make municipal buildings resilient by 2035.

What is the Mobility and Land Use System?



Climate Action & Adaptation Plan

- The layout and zoning of the City
- The mobility options available – transit, bike/ped, vehicles
- The kinds of vehicles we drive (EV)
- The ability to move around in an emergency or climate event

Mobility and Land Use System



Climate Action & Adaptation Plan

Measure ID	Measure Text
Mobility and Land Use System	
MLS-1	Reduce reliance on single-occupancy vehicles by promoting increased residential densities along transit and commercial corridors, increasing mix of land uses and expanding the range of attainable housing choices.
MLS-2	Increase active transportation mode share to 3% by 2030 and 10% by 2045 by increasing the safety and availability of the transportation system to support walking and biking for all members of the community.
MLS-3	Enhance the transit system to be more resilient, accessible, and convenient to increase mode share to 5% by 2030 and 10% by 2045.
MLS-4	Increase passenger and commercial zero-emission vehicle use and adoption to 25% by 2030 and 90% by 2045, respectively.
MLS-5	Electrify or otherwise decarbonize 30% of community-operated off-road equipment (e.g., lawnmowers, leaf blowers, and chainsaws) operations by 2030 and 100% by 2045.
MLS-6	Transition to 75% zero-emission municipal fleet by 2030 and 100% by 2040.

What is the Urban Eco-System?



- The parks and greenspace the City provides
- Water consumption and conservation
- Organic waste diversion and composting
- Mitigating wildfire and flooding
- Growing local foods

Urban Eco-System



Climate Action & Adaptation Plan

Measure ID	Measure Text
Urban Eco-System	
UE-1	Increase organics diversion through SB-1383 to divert 75% of organic material by 2025.
UE-2	Increase tree canopy to 25% by 2030 and 30% by 2045 by focusing on communities most vulnerable to extreme heat.
UE-3	Reduce the potential for wildfire to spread in Glendale by actively managing 50-75 acres of land annually through prescribed burns, brush clearance, grazing, and building hardening.
UE-4	Increase access to affordable and fresh produce through partnerships and technical assistance.
UE-5	Reduce per capita water use X% by 2030 and Y% by 2045 by enhancing water conservation and water quality and increase the Glendale water system's resilience to climate extremes by upgrading water and stormwater facilities.
UE-6	Showcase municipal leadership through increased landfill diversion rates, climate-smart food and purchasing behavior, and enhanced water efficiencies.

CAAP Engagement By the Numbers



Climate Action & Adaptation Plan

1. Online Engagement

- 40 word cloud responses
- 498 survey responses

2. Interdepartmental and Agency Engagement

- Total Meetings: 3 interdepartmental workshops, 25+ department meetings, 4 sustainability commission meetings
- Total Attendees: 69

3. Focus Groups

- Total Meetings: 8
- Total Attendees: 92

4. Mini-grant

- \$1,150 disbursed to Adams Hill Neighborhood Association
- \$3,000 disbursed to Go Glendale
- \$250 disbursed to Girl Scouts

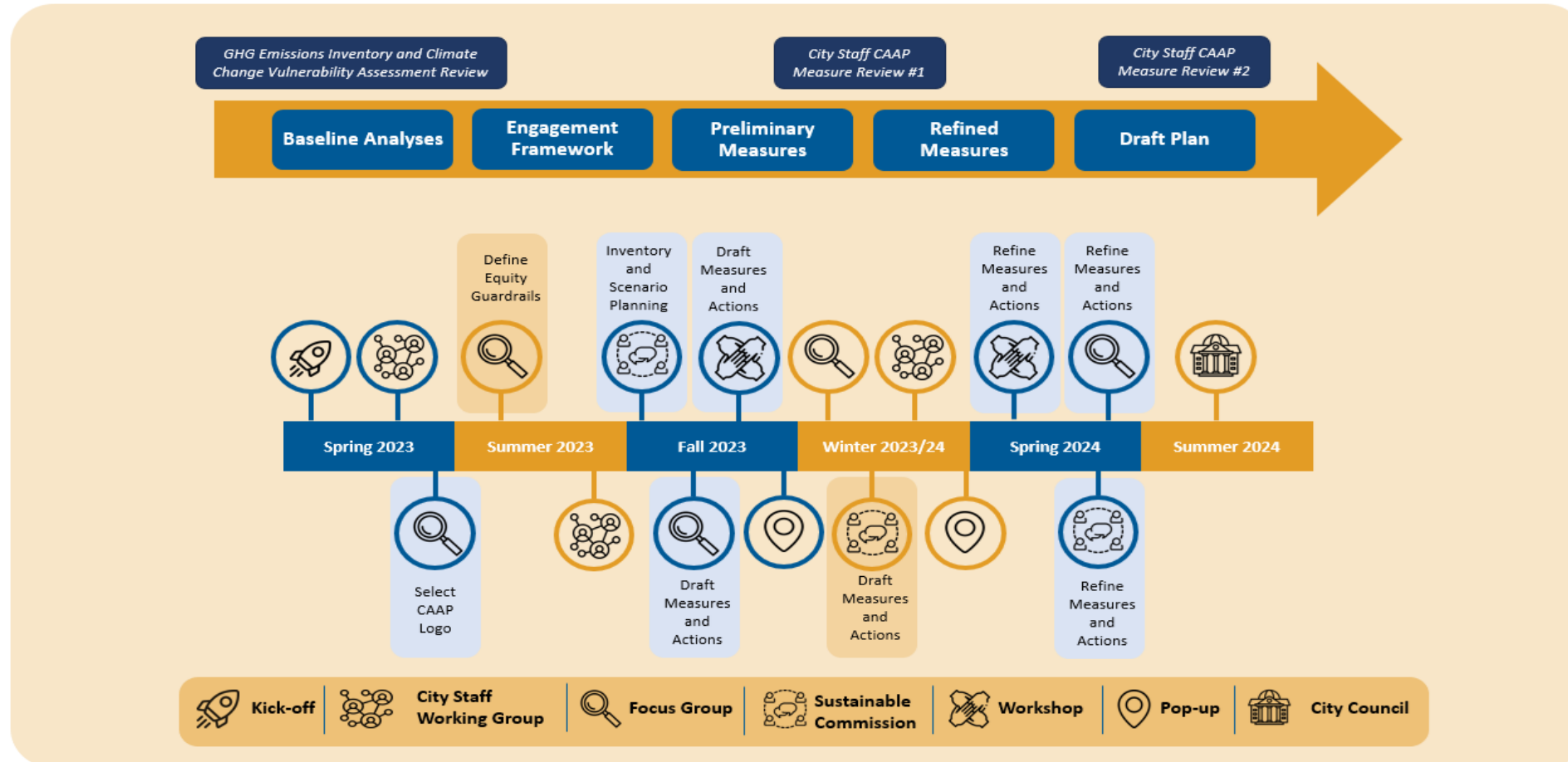
5. General Public Engagement

- 44 Community Meetings
- 385 community meeting attendees
- 29 pop-ups at existing community events
- 1,368 attendees at pop-ups at existing community events
- 660 comment cards received
- 758 pop-up feedback points
- 100 CAAP information booklets distributed
- Total Open Houses (climate cafes): 2
- Total Open house/climate café Attendees: 120

CAPP Engagement Timeline



Climate Action & Adaptation Plan



CAAP Engagement Details



Climate Action & Adaptation Plan

- **Community Meetings and Presentations:**
 - Glendale Chamber of Commerce: 17 attendees
 - Assemblymember Laura Friedman District Staff: 4 attendees
 - Girl Scout Troop 71311: 18 attendees
 - SoCal Gas: 1 attendee
 - Clark Environmental Club: 11 attendees
 - Glendale Building Electrification Working Group: 3 attendees
 - AFC Subgroup CAAP Meeting: 5 attendees
 - Arroyos & Foothills Conservancy: 7 attendees
 - Mom Walk Collective: 8 attendees
 - Girl Scout Troop 7371: 13 attendees
 - Teens Give Back Casa Verdugo: 2 attendees
 - Verdugo Woodlands Neighborhood Association: 3 attendees
 - Teens Give Back Central Library: 12 attendees
 - Teens Give Back Grandview Library: 5 attendees
 - Joie de Vivre Spring Trunk Show: 18 attendees
 - Hoover High School Climate Club: 18 attendees
 - Glendale High School Presentation: 15 attendees
- **Open Houses (Climate Cafes):**
 - Sparr Heights Community Center (May 10, 2024): 50 attendees
 - Glendale Central Library (May 18, 2024): 70 attendees
- **Pop-Up Events:**
 - Grandview Library Clothing Swap (March 2, 2024): 78 attendees
 - Montrose Library Repair Cafe (March 9, 2024): 91 attendees
 - Verdugo Park Electric Landscaping Demo (March 16, 2024): 35 attendees
 - GCC Garfield Campus Norooz Celebration (March 20, 2024): 110 attendees
 - Pacific Park Spring Eggstravaganza (March 23, 2024): 20 attendees
 - Hoover High School Employment/Resource Fair (March 28, 2024): 60 attendees
 - Pacific Park Cesar Chavez Commemorative Event (March 30, 2024): 35 attendees
 - GCC Verdugo Campus Career Fair (April 4, 2024): 60 attendees
 - Isabel Parking Lot Electric Car Guest Drive (April 6, 2024): 35 attendees
 - Glendale Memorial Earth Day Fair (April 17, 2024): 42 attendees
 - Crescenta Valley High School Resource Fair (April 18, 2024): 37 attendees
 - Verdugo Park Earth Day Fair (April 20, 2024): 60 engaged
 - GCC Earth Day Fair (April 23, 2024): 28 attendees
 - Clark Magnet High School Resource Fair (April 25, 2024): 66 attendees
 - Benjamin Franklin Earth Fest (April 27, 2024): 51 attendees
 - ED Small Business Summit (May 2, 2024): 34 attendees
 - Montrose Harvest Market (May 19, 2024): 75 attendees

Emails Sent



Climate Action & Adaptation Plan

- Armenian General Benevolent Union - GenNext Mentorship Program
- Adams Hill Neighborhood Association
- Adopt-A-Family Club
- Adventist Health Glendale
- Advocating Health Equity & Inclusivity
- All For Health, Health For All
- American Cancer Society
- American Legion - Post 127
- American Red Cross - Northern Valley Headquarters
- Americana
- Animal Humane Society
- Antaeus Theatre
- Arco
- Ark Family Center
- Armenian American Chamber of Commerce
- Armenian American Mental Health Resources
- Armenian Club
- Armenian Council of America
- Armenian Cultural Foundation
- Armenian Engineers & Scientists of America
- Armenian National Committee
- Armenian Politics Club
- Armenian Relief Society - Western Region
- Armenian Society of Los Angeles
- Armenian Union
- Armenian Youth Association of California
- Armenian Youth Federation, Western US
- Arroyo Foothills
- Art Club
- Ascencia
- Ascencia
- Ascencia Glendale
- Assistance League of Glendale
- Associates of Brand Library & Art Center
- AT&T

- Best Buddies Club
- Black in Glendale
- BLK Dream Camp Co
- Body Positivity Club
- Book Club
- Botany Club
- Boy Scouts of America
- BSU
- Bsu poc empowerment club
- Build a Backpack Club
- California Scholarship Federation (CSF)
- Car Club
- Cards for Humanity Club
- Catholic Charities
- CDBG Committee
- Center for Discovery
- Ceramics Club
- Chemistry Club
- Chess & Games Club
- Chess club
- Chevy Chase Estates Association
- Children's Hospital LA
- Choir club
- Climate Club
- Climate Reality Project - Los Angeles Chapter
- Coding Club
- College Hills Community Association
- Committee for Armenian Students in Public Schools (CASPS)
- Community Foundation of the Verdugos
- Cooking for A Cause
- Counseling4kids
- County of Los Angeles Department of Public Health
- Crafts for charity club
- Creative Writing Club
- Crescenta Highlands Neighborhood Association
- Crescenta Valley Chamber of Commerce

- Crescenta Valley High School
- Crochet Club
- Culinary Club
- Cuningham
- CV Recycles
- Davidian & Mariamian Educational Foundation
- Days of the Verdugo Heritage Association
- Debate club
- Debate Club
- Dept. of Justice
- Didi Hirsch, Adult Services
- Didi Hirsch, Armunity Program
- Dignity Health Glendale Memorial Hospital
- Door of Hope
- Downtown Glendale Association
- Drama Club
- Dungeons and Dragons
- Environmental Club
- Faith Club
- Family Promise of the Verdugos
- Fashion Club
- FBLA (Future Business Leaders of America)
- FCA (Fellowship of Christian Athletes)
- Feminist Society
- Fern Lane HOA
- Filipino American Business Association of Glendale
- Filipino Club
- Film Festival
- Filmmaking Club
- FRIENDS OF THE GLENDALE PUBLIC LIBRARY
- Friends of the LA River
- GALAS LA
- GAME (Glendale Athletes Motivate & Educate)
- Gaming & development club
- Gardening Club
- Gay and Lesbian Armenian Society

Emails Sent



Climate Action & Adaptation Plan

- Gharibian Real Estate & Finance/ CDBG Committee
- GHCC
- Girls in STEM Club
- Glendale Arts
- Glendale Association of Realtors
- Glendale Bar Association
- Glendale Chamber of Commerce
- Glendale Communitas Initiative
- Glendale Community College
- Glendale Community Free Health Clinic
- Glendale Council PTA
- Glendale Educational Foundation
- Glendale Elks
- Glendale Environmental Coalition
- Glendale Fire Fighters Association
- Glendale Galleria
- Glendale Health Center
- Glendale Healthier Community Coalition
- Glendale Healthy Kids
- Glendale Historical Society
- Glendale Humane Society
- Glendale Kiwanis Club
- Glendale Latino Association
- Glendale Library Association
- Glendale Library, Arts and Culture Trust
- Glendale Memorial Hospital
- Glendale Moose Lodge
- Glendale Out
- Glendale Out
- Glendale Parks and Open Space Foundation
- Glendale Philharmonic
- Glendale Police Foundation
- Glendale Police Officers Association
- Glendale Students for Sustainability
- Glendale Sunrise Rotary
- Glendale Teachers Association

- Glendale Tenants Union
- Glendale Unified School District
- Glendale Veterans Coalition
- Glendale YMCA
- Glendale Youth Alliance
- Glendale Youth Orchestra
- Glendale YWCA
- Glenn Knoll HOA
- Glenoaks Canyon Homeowners Association
- GoGlendale
- Grounded
- HERd Club
- Historical Society of Crescenta Valley
- Homenetmen Glendale Ararat Chapter
- Housing Rights Center
- Hunger Heroes
- Institute for Multicultural Counseling
- Italian club
- Jackson Vintage Properties
- Junior State of America
- Keller Williams Commercial Glendale
- Kenneth Village Merchants Association
- Key Club
- Kindness Club
- Korean club
- Kpop dance club
- Lark Musical Society
- Letters to Rose
- Los Angeles Regional Collaborative for Climate Action and Sustainability
- Make a Wish
- Medical club
- MedProse Consulting
- Mental Health Awareness
- MESA Club
- Mock Trial

- Mock Trial
- Model UN
- Montecito Park Neighborhood Association
- Monterey Road Eco-Community Gardens
- Montrose Shopping Park Association
- Montrose Verdugo City Chamber of Commerce
- Multicultural Club
- NAMI Glendale: Mental Health Support, Education & Resources
- National Charity League
- National Honors Society
- Neighborhood Legal Services of LA County
- Nitro E-Sports Club
- Northwest Glendale Homeowners Association
- Northwest Glendale Lions Club
- Ocean Awareness Club
- Old game historical society
- On the same page book
- Open arms society
- Origami Club
- Parks, Recreation, & Community Services Commission
- Pasadena Humane Society
- Pear Tree Foundation
- Pelanconi Estate Homeowners Association
- Pen + Napkin
- Ping pong club
- Planned Parenthood
- Pre-law club
- Pride Club
- Puzzle Club
- Rancho San Rafael Homeowners
- Red Cross Club
- Reduce, Reuse, Recycle (3 R's club)
- Rotary Club of Glendale
- Royal Canyon Property Owners Association
- Running Research Cub

Emails Sent



Climate Action & Adaptation Plan

- Russian club
- Salvation Army Glendale
- San Gabriel Valley Habitat for Humanity
- Save the Seas
- Schools for schools club
- Sierra Club Verdugo Hills Group
- Silversher Productions
- Slime Club
- Sneaker Club
- SoCal 350 Climate Action
- Soroptimist of Glendale
- Spanish Club
- STAR Club
- Sunrise Movement LA
- Sunrise Rotary
- Sunroom Desk
- Surf Club
- Surfrider Foundation
- Sustainability Commission
- The Campbell Center
- the Glendale Community
- The Pear Tree Foundation
- Thrasher Club
- Tongva Council
- Tornado young life
- Trash for Cash
- Tri-M Music Honor Society
- U.S. Green Building Council - Los Angeles
- UCLA
- UNICEF club
- United American Indian Involvement
- United Young Armenians
- USC Verdugo Hills Hospital
- Verdugo Woodlands Dads Club
- Verdugo Woodlands West Homeowners Association
- Veterans Coalition of Glendale & the Verdugos

- Veterans Village of Glendale
- Walk Bike Glendale
- WE Club
- Weightlifting Club
- Wellness Works
- Whiting Woods Property Owners inc.
- Women's Civic League of Glendale
- WRP Group
- YMCA of the Foothills
- You Belong
- YWCA Glendale and Pasadena

Total: 259

CAAP Engagement Groups



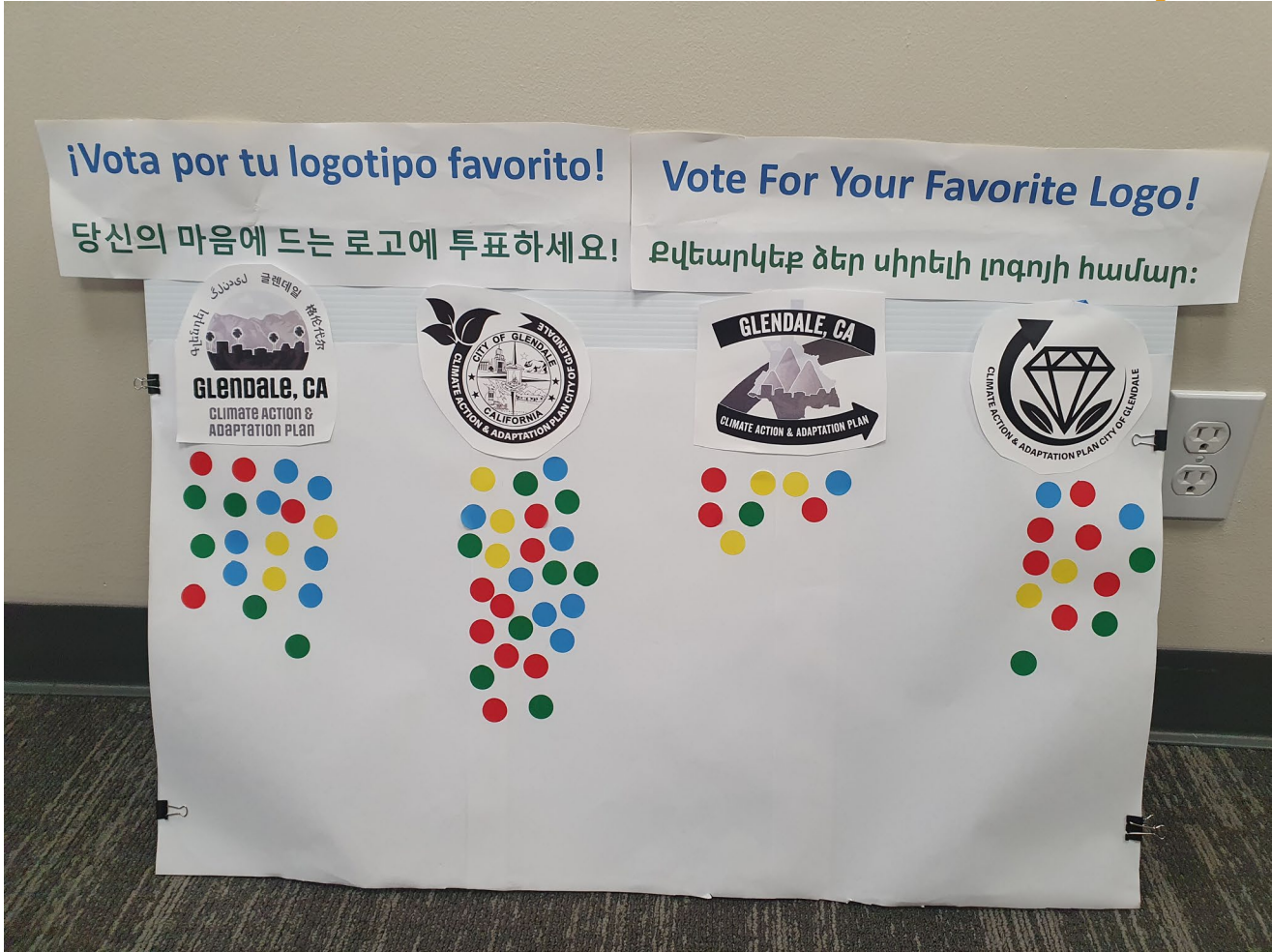
Climate Action & Adaptation Plan

Phase	Engagement Activities	Key Deliverables
Phase 1: Data Gathering and Existing Conditions (Spring 2023-Fall 2023)	<ul style="list-style-type: none"> City Staff Sustainability Working Group #1 Focus Groups #1 and #2 Website Launch Engagement Toolkit Part 1 (Community Priorities) Community Workshop #1 - results of Inventory, forecast, targets, CCVA, draft equity framework, & brainstorming CAAP strategies City Sustainability Commission #1 <ul style="list-style-type: none"> Results of GHG Inventory and CCVA (9/7 – City leads) Website Update (Story Map with equity framework, results from GHG inventory and CCVA) 	<ul style="list-style-type: none"> Public Engagement Strategy Greenhouse Gas (GHG) Inventory and Memo GHG Forecast Consumptive Based Inventory Review and updated Memo Climate Change Vulnerability Assessment (CCVA) Equity Framework
Phase 2: Strategy Development (Fall – Winter 2023/2024)	<ul style="list-style-type: none"> Survey Launch (High level strategies) Engagement Toolkit Part 2 Mini-grant implementation (\$ disbursement + outcomes) City Sustainability Commissions #2 and #3 <ul style="list-style-type: none"> #2 – Forecast, Targets, and High-level Strategies – SPARQ (10/5 – Rincon leads) #3 - Draft Measures and Actions Community Pop-up #1 and #2 (Here LA leading) – High-level Strategies Focus Groups #3 and #4 – Topics TBD depending on community concerns City Staff Sustainability Working Groups #2 and #3 <ul style="list-style-type: none"> #2 – Forecast, Targets, and CAAP Strategies – SPARQ (early/mid Sept) #3 – Draft CAAP Measures and Actions (October) Individual Department Meetings – Draft CAAP Measures and Actions Website Update (Story Map with draft CAAP measures and actions) Community Workshop #2 - Draft CAAP measures and actions 	<ul style="list-style-type: none"> Scenario Planning and Reduction Quantification (SPARQ) Tool Draft CAAP Measures and Actions
Phase 3: Adoption of CAAP (Winter 2023/2024 – Spring 2024)	<ul style="list-style-type: none"> Website Update (Story Map with Draft CAAP) City Council Hearing #1 - Draft CAAP Measures and Actions City Council Hearing #2 - Final CAAP 	<ul style="list-style-type: none"> Final CAAP Measures and Actions Draft CAAP Final CAAP

Logo Voting



Climate Action & Adaptation Plan



Voting Boards



Climate Action & Adaptation Plan



CITY OF GLENDALE CLIMATE ACTION AND ADAPTATION PLAN

We want to hear from you!

Step 1: Use the provided dot stickers to vote for your top choice(s) and add any extra thoughts with post-it notes.
Step 2: Visit the website and stay involved.

What should the City prioritize when creating new projects and policies in Glendale? Please vote on your top three priorities.

Cost effectiveness and affordable living	Waste reduction
Better mobility like public transportation and bike lanes	Water conservation
Better health and safety including air quality	Urban greening, community gardens, and recreation
Improved community connectedness	Cultural preservation
Energy efficiency and reliability	Other? Add your thoughts here!

Please vote on the top three equity values that you think the City should consider when planning for the future.

Equitable access to economic, health, and safety benefits in Glendale	Consider living costs
Funding to support community members achieve a higher quality of life	Increased community investment, engagement, and information-sharing
Community partnerships to provide resources and programs	Other? Add your thoughts here!

Your voice matters! Scan to discover more about the project and find opportunities to get involved.
GlendaleCA.gov/CAAP | Sustainability | (818) 548-4844 | Instagram: @GlendaleSustainability

Climate Action & Adaptation Plan

Workshops



Climate Action & Adaptation Plan

Person

elderly
young families
recreation walking
individual walkers
group walkers

Painpoints

wide street → FF crowd
people get forced into bike lanes bc sidewalk small
Santa Carola not suitable for speed bumps
some crosswalks but lots of stop signs
no corner shop, mostly single family zoning, not much mix
Dunsmore park is the gathering place (a big asset)
closest retail is Foothill which is further away

Dream St

neighbourhood commercial along Dunsmore + Santa Carola
- coffee shop, corner shop, fun place to gather meet up
- an elementary is nearby
- lawns that aren't water heavy
- native + drought tolerant greenery along the street and area
- community garden area, maybe even food along public parkway
- people can contribute to neighborhood
- keep bike lane like separate diaphanous area separating sidewalk from road
- maybe a medium vol community art + get rid of 1 side of parking
- EV charging stations
- ground abouts w/ public art
- artistic crosswalks
- benches for sitting
- library? maybe?
- cooperative library
- building for local biz + art

Public transit maybe a hard sell
community/ some people see it as negative (Don't want to become Santa Monica)
Push back from taking away single family zoning - allow transition zoning
Locals would want the safety of sound N of traffic
More transit to older times and older neighborhoods
Nostalgia
Banning for priority parking
Re-zoning for little retail there, not large neighborhood
Shuttles/ bus services to Dunsmore + area, like a micro transit + scooters + bikes
Show how this would allow options to not drive + do less of things
Visualize Dream St + what it could be like VR "see the vision"

Present solution as part of a larger system + community/ Glendale wide initiative

Verdego Blvd (Arroyo similar area Alamo Hills) to outside

More transit

Context: Adam is a student at Glendale High School. He was involved in a car accident as a pedestrian on his way to school. A car ran over his foot in front of adventist hospital. His classmates want a campaign to keep Adam safe.

Modifications for Safer streets

Make more street lights
Make more crosswalks
More roots in potential streets to reduce speeding
Separate transit options for students
Keep Adam safe

Mobility & Land Use

- Incentize walking & biking by making it safer & more pleasant
- Trees are important for walking because it cools areas and have the effect of slowing down traffic.
 - slowing drivers down makes it safer, quieter (no trees around Galleria).
- Increase trees canopy around transit and have it more frequent.
- Dedicated bus lanes. If its faster, more inclined to take the bus. Especially around Galleria/American.
- Make public Transit Free, frequent, and Comprehensive
- No more new drive thru
- Portion of parking coast should go for public transit.
- Carbon zones like in London < this could happen around B. Hall.
 - protected bike lanes.
- Mixed use: people r probably more used to it.

Workshops



Climate Action & Adaptation Plan



Departmental Meetings



Climate Action & Adaptation Plan



Pop-Ups



Climate Action & Adaptation Plan



Zines & Bus Cards



Climate Action & Adaptation Plan





Share Your Thoughts!

In one word, what does a sustainable and livable Glendale look like?



Online Surveys – What we heard

- Survey #1 – CAAP Strategies (29 responses, all English)
 - 97% are concerned or very concerned about climate change
 - 22% identified needing financial incentives for building upgrades
 - 21% identified needing expansion of dedicated/protected bike lands and more secure bike parking options in public places to increase safety while biking
 - 4 respondents would like to see an increase in green spaces
 - 28% had not participated in a public planning process before
- Survey #2 – CAAP Hurdles (13 responses, all English)
 - 54% identified needing financial support and 23% identified needing landlord support to replace existing gas-powered appliances with electric
 - 46% identified needing financial support and 31% identified not needing any additional support to install solar panels
 - 3 respondents noted safety concerns either related to biking or taking public transit in the city
 - 62% had not participated in a public planning process before