

CITY OF **G**lendale

Exhibit #3

25 FEBRUARY 2025

AMENDMENT
OF GLENDALE'S
GENERAL PLAN -
OPEN SPACE AND
CONSERVATION
ELEMENT AND
RECREATION
ELEMENT

OLIN

MEET THE TEAM



JESSICA HENSON
Partner-in-Charge
OLIN



SARAH SWANSEEN
Project Management and
Planning Support
OLIN



BRIAN TRUSTY
Recreation Management Consultant
PROS CONSULTING



JULIE DONOFRIO
Planning and Engagement
Specialist
OLIN



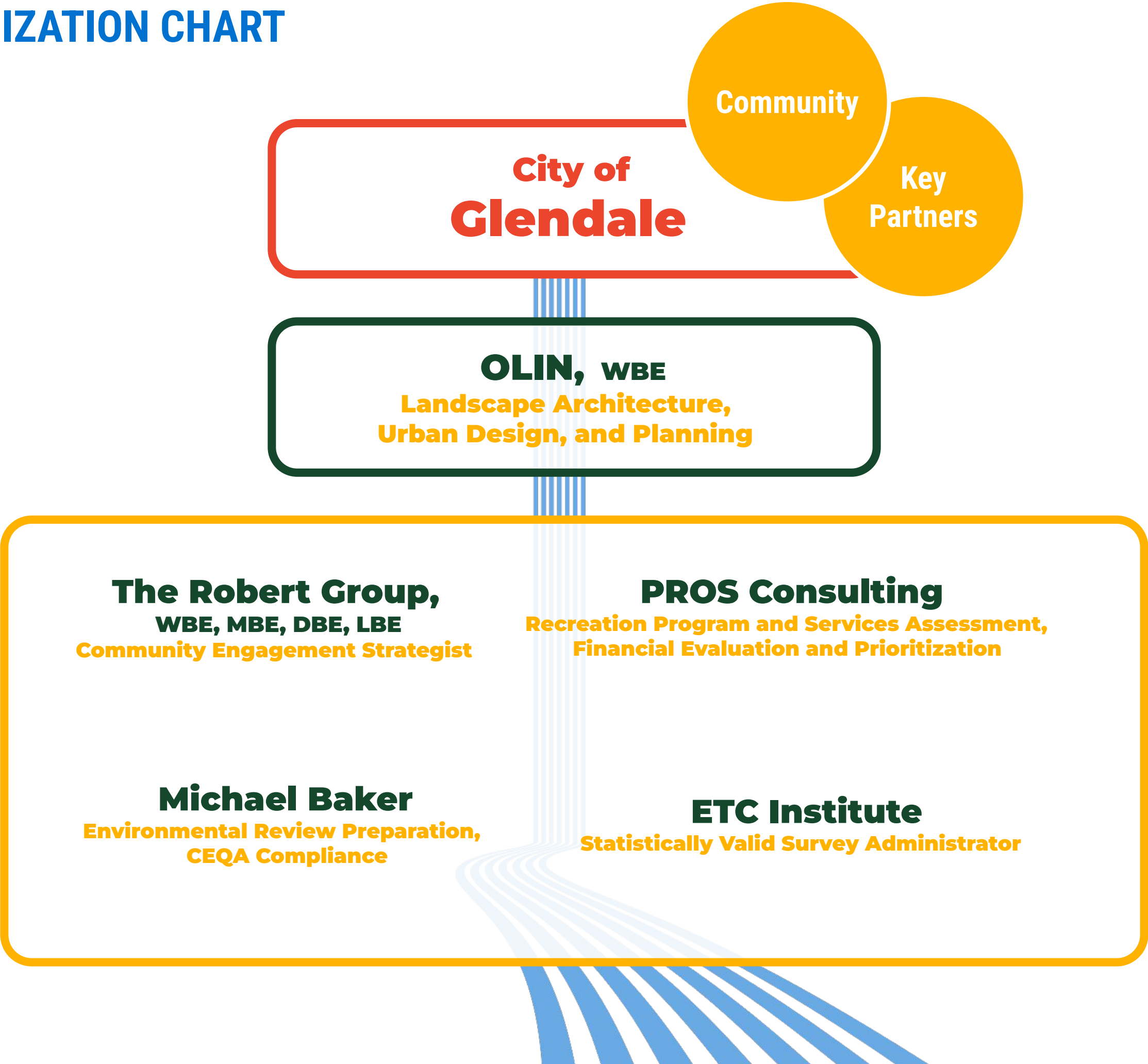
CHRISTINA MONZER
Engagement Specialist
THE ROBERT GROUP



JOHN BELLAS
CEQA Advice and Strategy
MICHAEL BAKER INTERNATIONAL



TEAM ORGANIZATION CHART







OLIN Labs

A network of designers at OLIN committed to research, development, and education in landscape architecture.



Modes of Inquiry

Research

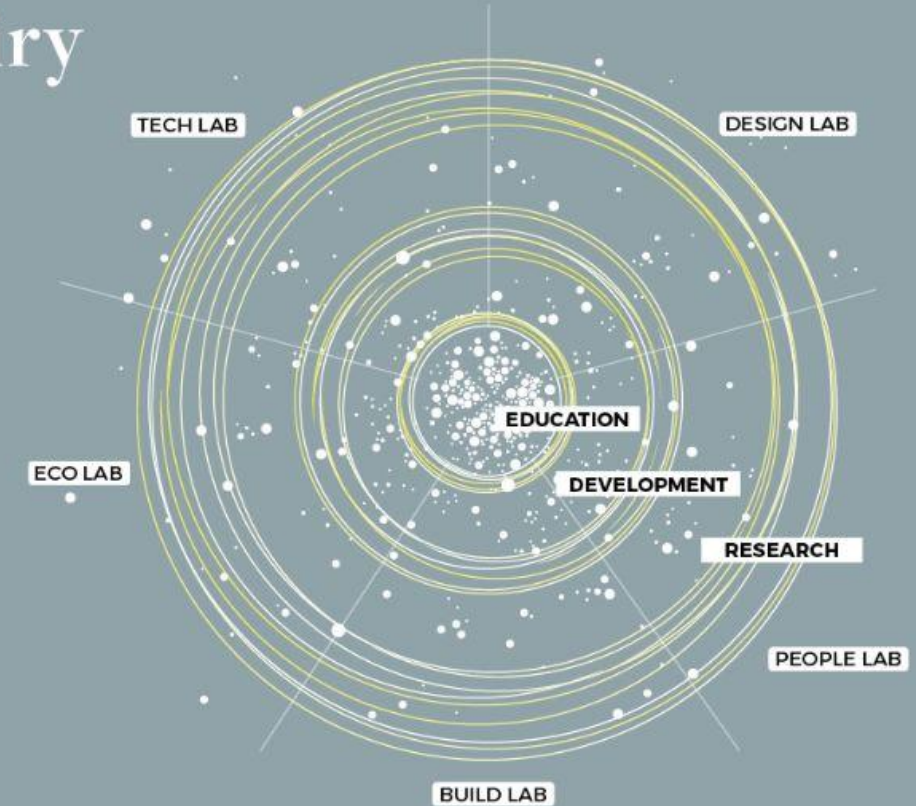
initiatives are focused on original knowledge creation.

Development

is where we create new tools and processes to enhance our workflow and design process.

Education

is the framework for knowledge building and sharing across the studio.



POST-REFINERY FUTURES

AFTER 150 YEARS, PHILLY LOSES ITS REFINERY



TOWARDS A PUBLIC VISION



KEY STAFF AVAILABILITY



NAME	ROLE ON THIS PROJECT
Jessica Henson, OLIN	Partner-in-Charge
Sarah Swanseen, OLIN	Project Management Support
Joanna Karaman, OLIN	Ecological Systems Designer
Julie Donofrio, OLIN	Planning and Engagement Specialist
Andrew Dobshinsky, OLIN	Parks Planning Specialist
Christine Robert, The Robert Group	Engagement and Outreach Specialist
Isaiah Ford, The Robert Group	Engagement and Outreach Specialist
Michael Svetz, PROS Consulting	Recreation Management Consultant
Brian Trusty, PROS Consulting	Recreation Management Consultant
John Bellas, Michael Baker International	CEQA Advice and Strategy
Fareeha Kibriya, Michael Baker International	Planning Project Director
Ryan Murray, ETC Institute	Statistically Valid Survey Consultant
John N. McGovern, WT Group	Accessibility Consulting Principal-in-Charge
Shelley A. Zuniga, WT Group	Accessibility Consulting Senior Project Manager, QAQC

Jessica Henson,

RLA, ASLA, AICP

PARTNER-IN-CHARGE | OLIN

- Extensive experience in Los Angeles including leading the LA River Master Plan, Culver City Parks Plan, City of LA Park Needs Assessment, and Sepulveda Basin Vision Plan
- Extensive built work, including parks and public landscapes
- Landscape and Planning Studio Professor at USC



J. PAUL GETTY CENTER | Los Angeles, CA



THE METROPOLITAN MUSEUM OF ART | New York, NY



LEGACY

WASHINGTON MONUMENT | Washington, D.C.



BRYANT PARK | New York, NY



GOOGLE BAY VIEW CAMPUS | Mountain View, CA



APPLE PARK | Cupertino, CA



CALIFORNIA

THE HILLS AT VALLCO | Cupertino, CA



ANGELS LANDING | Los Angeles, CA





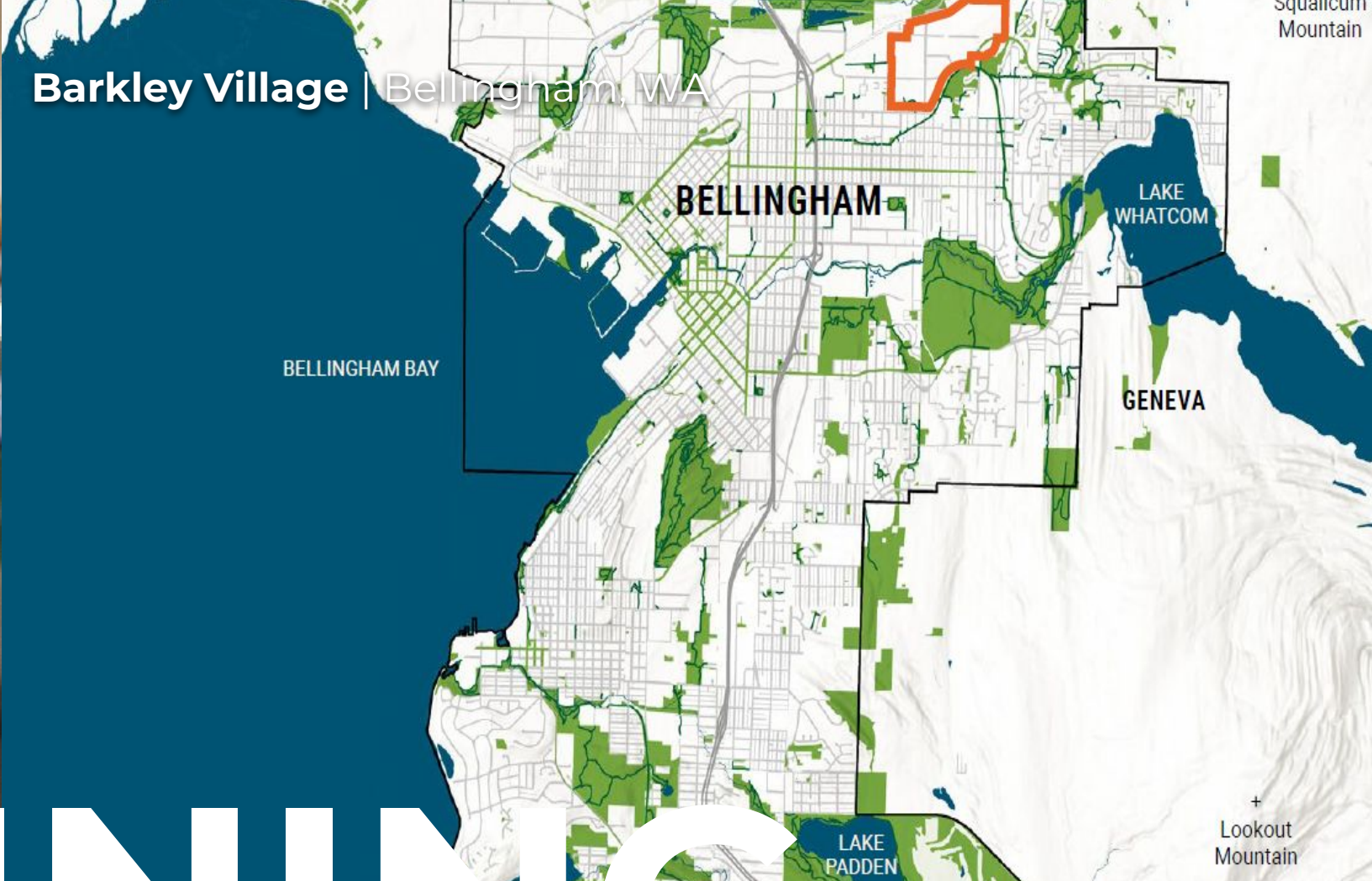
LOCAL



CLEVELAND PARKS & RECREATION PLAN | Cleveland, OH



Barkley Village | Bellingham, WA



PLANNING

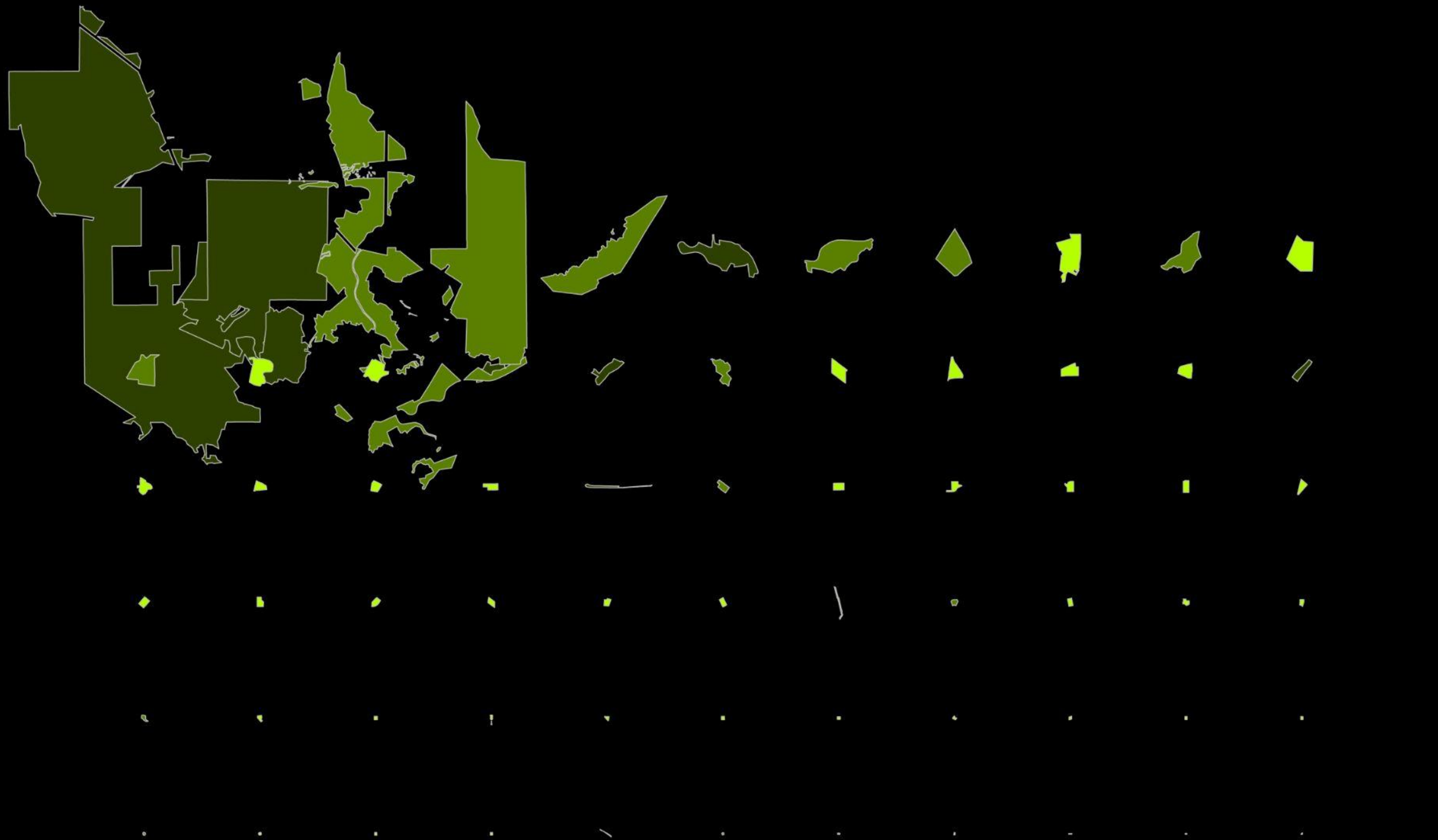
FORT COLLINS PARKS AND RECREATION MASTER PLAN
Fort Collins, CO



CULVER CITY PARKS | Los Angeles, CA



5,000+ ACRES OF PARKS AND NATURAL OPEN SPACE



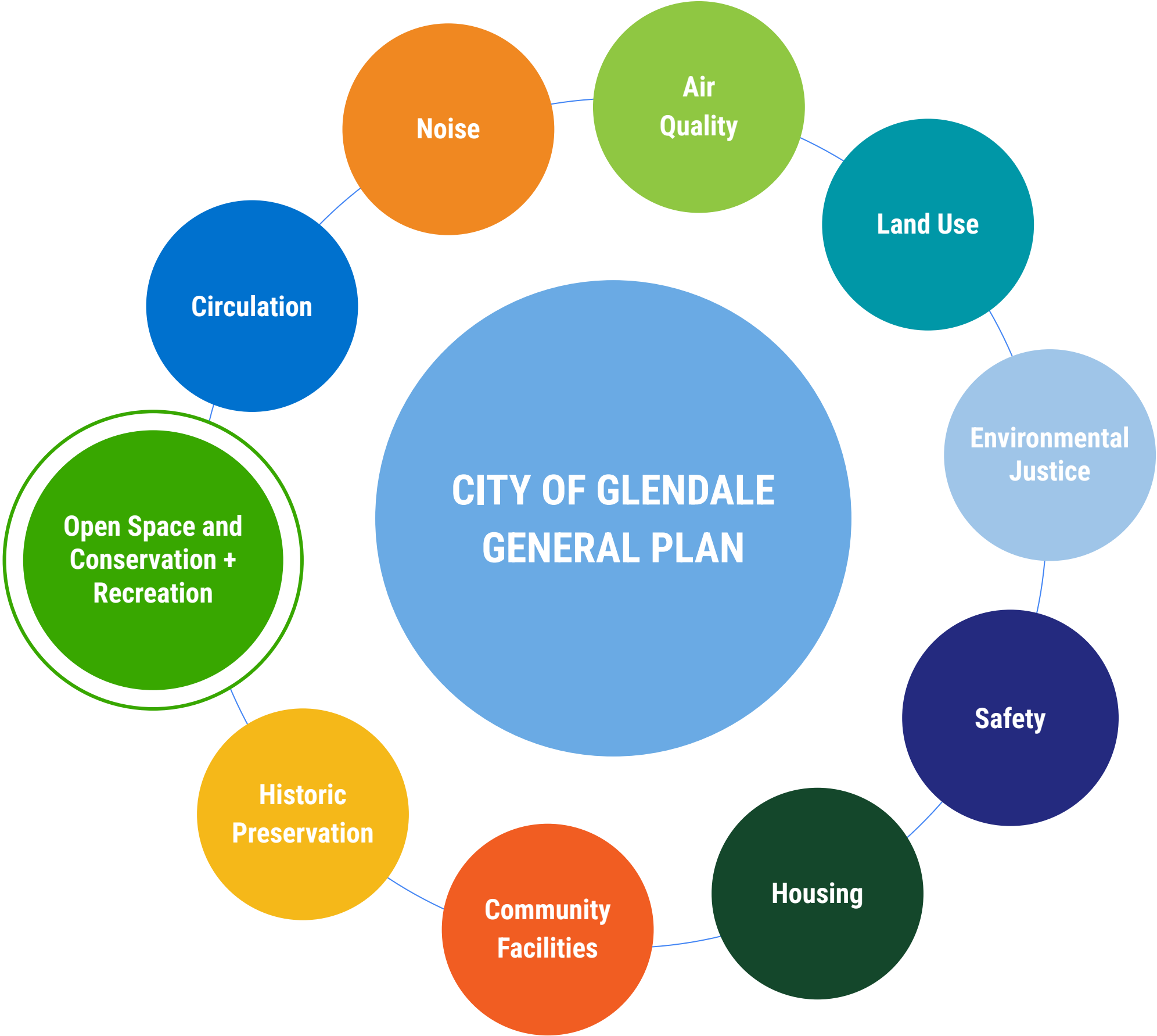
GENERAL PLAN UNDERSTANDING

OSC&R - 2 of 11 required elements of the City of Glendale's General Plan

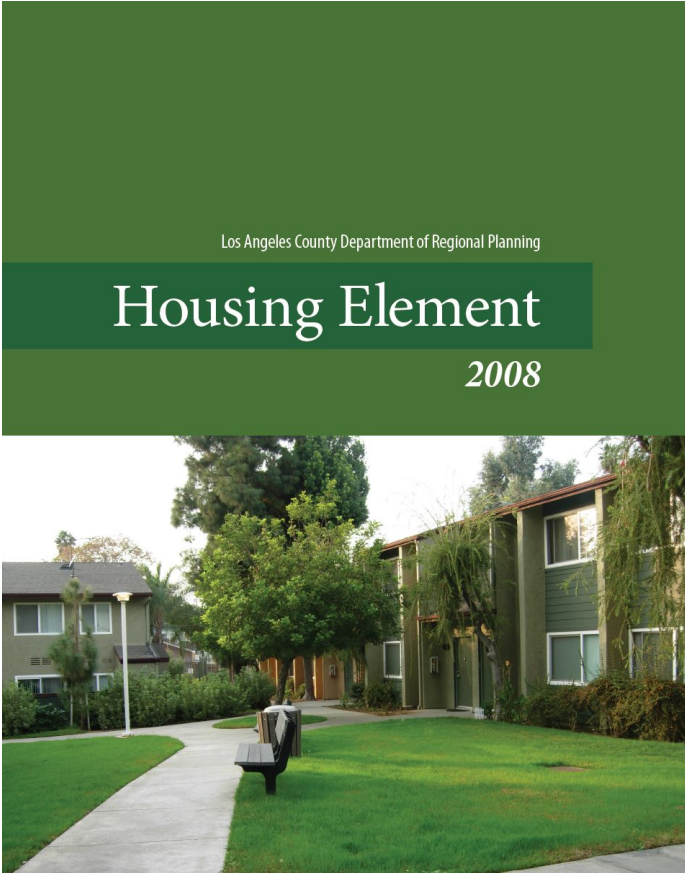
Last updated 1993/1996

To provide guidance on ecological conservation and restoration, trail and wildlife corridor opportunities, Parks Needs Assessment and recommendations, urban tree canopy, accessibility and inclusivity of parks, and and regional partnerships

+ and relate to each of the other General Plan elements to guide planning and development



GENERAL PLAN UNDERSTANDING + EXPERIENCE



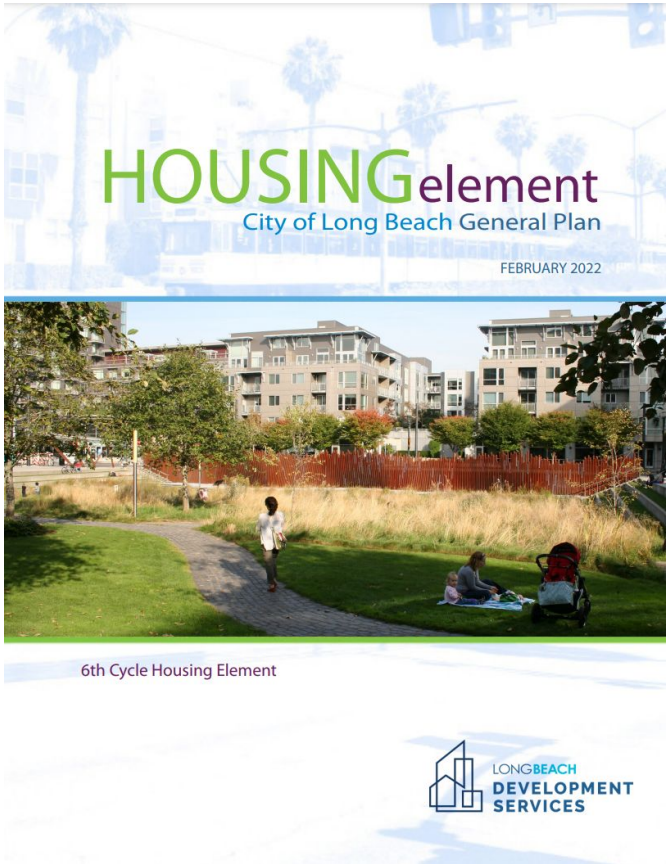
LA County General Plan /
Housing Element

2008, Julie Donofrio for EDAW/
AECOM



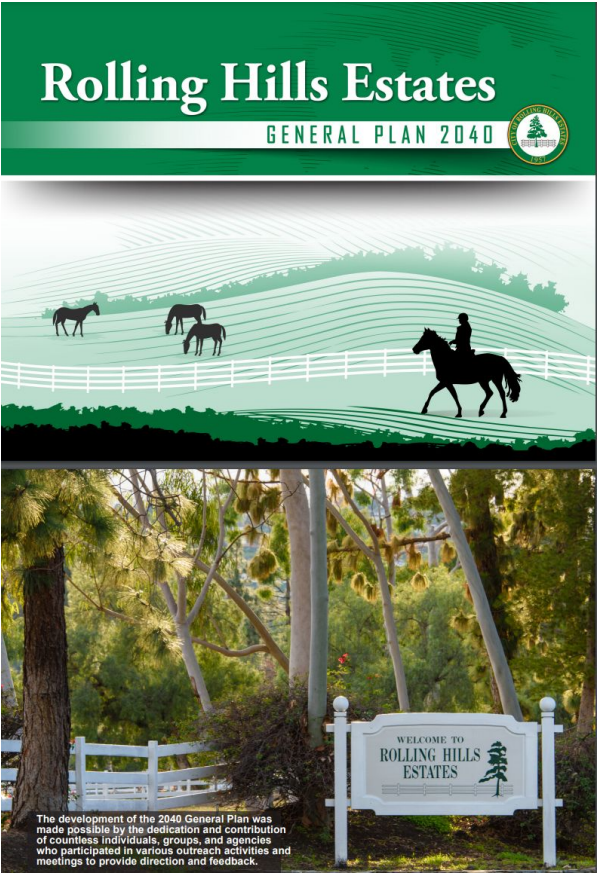
City of Mill Valley /
General Plan

2013, Julie Donofrio for WRT



City of Long Beach General
Plan/ Housing Element

2022, The Robert Group



Rolling Hills Estates
General Plan

2022, Michael Baker

THE GENERAL PLAN ELEMENTS MUST CONSIDER

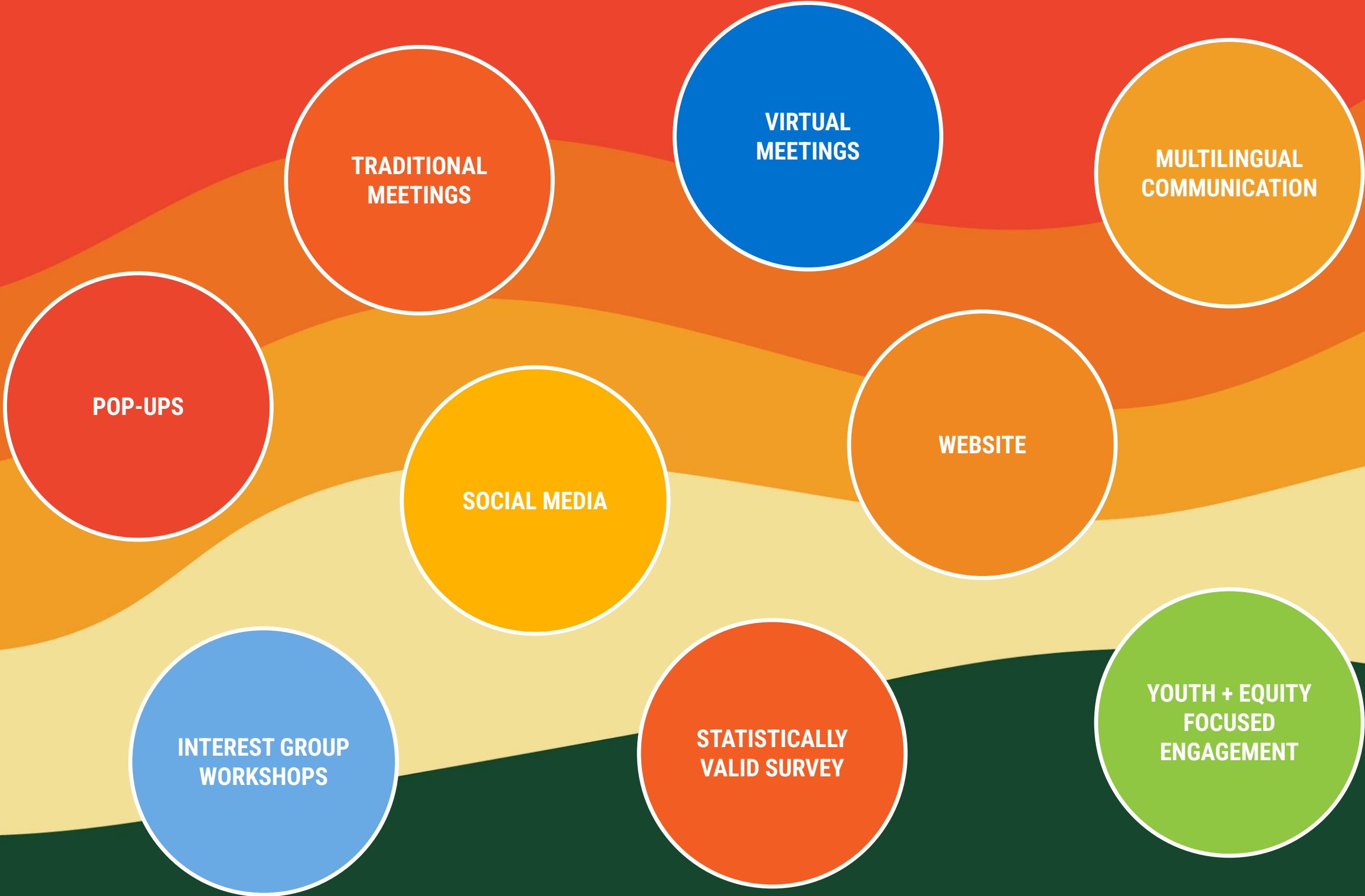
CLIMATE AND
ENVIRONMENTAL
SUSTAINABILITY

EQUITY

HEALTH

COMMUNITY

ENGAGEMENT INNOVATION



ENGAGEMENT FOR SEPULVEDA BASIN



POP UPS



Dances for the Developmentally Disabled (DDD) and Socialites
Image Source: OLIN, 2024.



Parks Plan Table at Culver West Alexander Park
Image Source: OLIN, 2024.



Culver City Farmers Market
Image Source: The Robert Group, 2024.



Culver City Senior Center
Image Source: The Robert Group, 2024.



Love Local x Helms Market
Image Source: OLIN, 2024.



Movies in the Park
Image Source: The Robert Group, 2024.



Fiesta La Ballona
Image Source: OLIN, 2024.



Fiesta La Ballona
Image Source: OLIN, 2024.

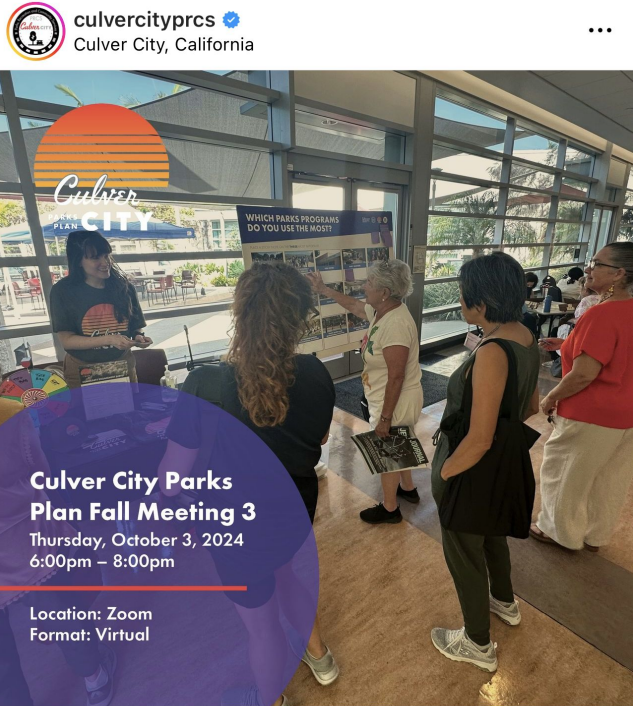
ANALOG AND DIGITAL ENGAGEMENT

Community Meeting Materials

If you were unable to attend the Community Meetings for the Culver Parks plan, you can view the recordings and slideshow presentations below.



Culver City Parks Plan Fall 2024 Community Meeting

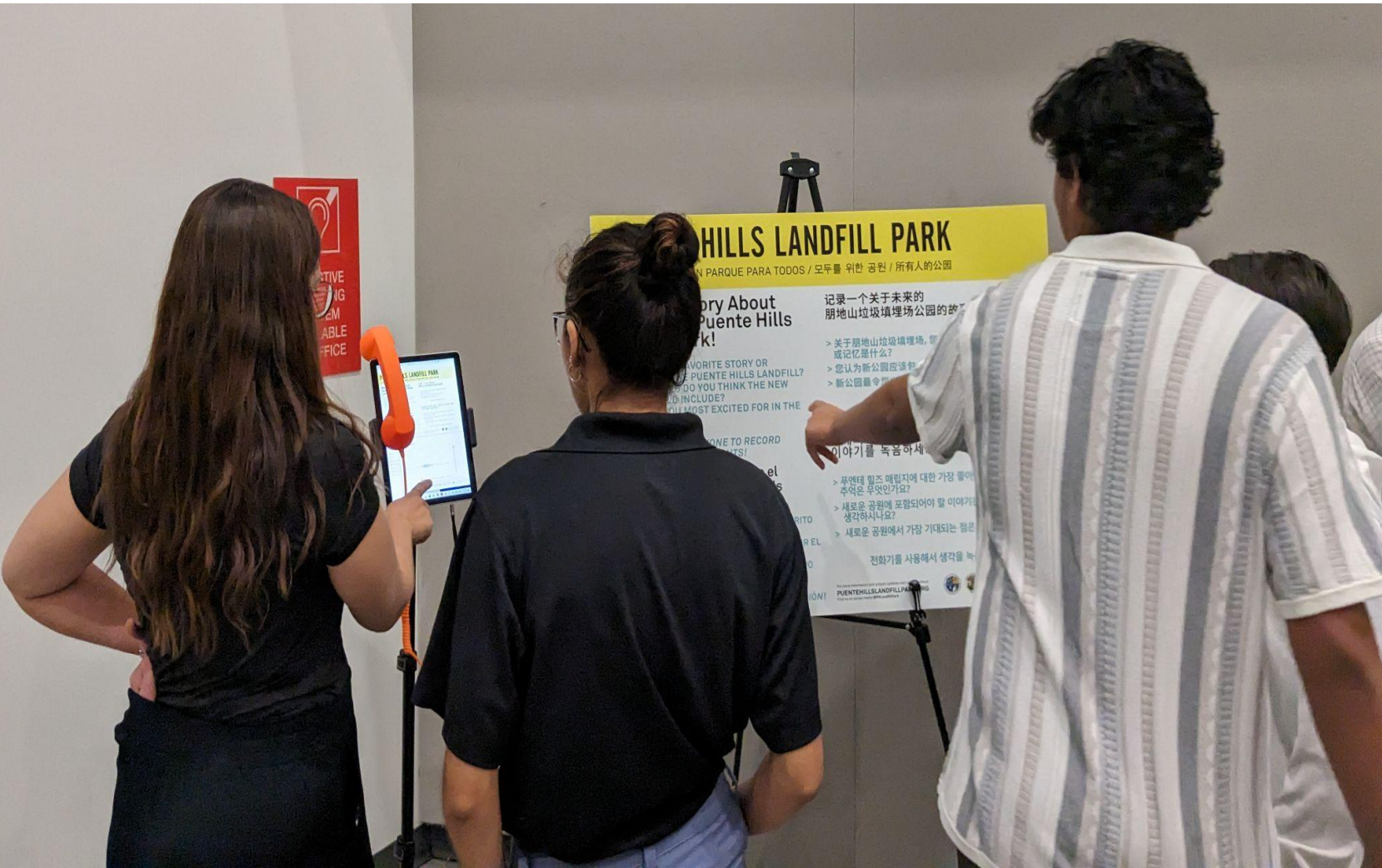


7 2

Liked by yankakara and others
culvercityprcs TONIGHT on ZOOM! Join us from anywhere!! 6-8 PM - link can be found here... more
October 3



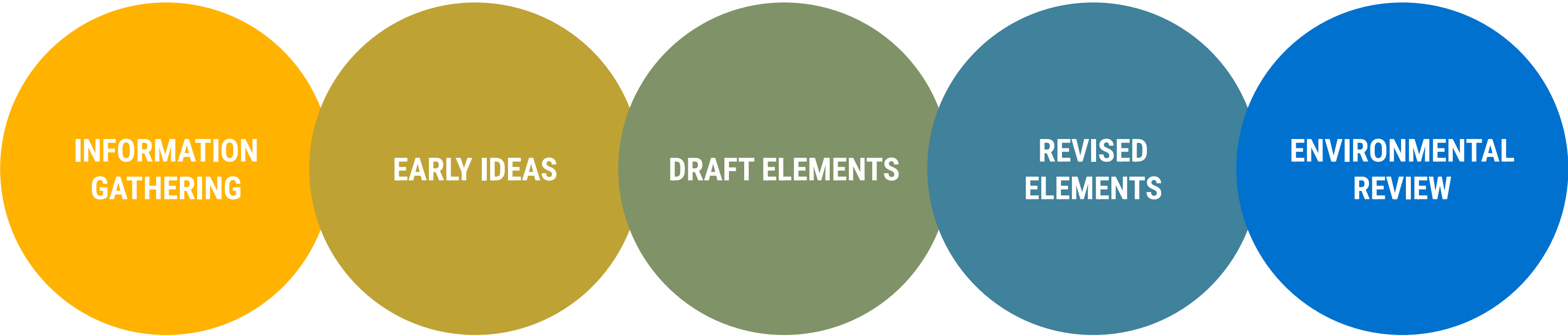
ENGAGEMENT FOR PUENTE HILLS LANDFILL PARK



TECHNICAL APPROACH



ROADMAP



WORK PLAN AND SCHEDULE

vi. Work Plan and Project Schedule

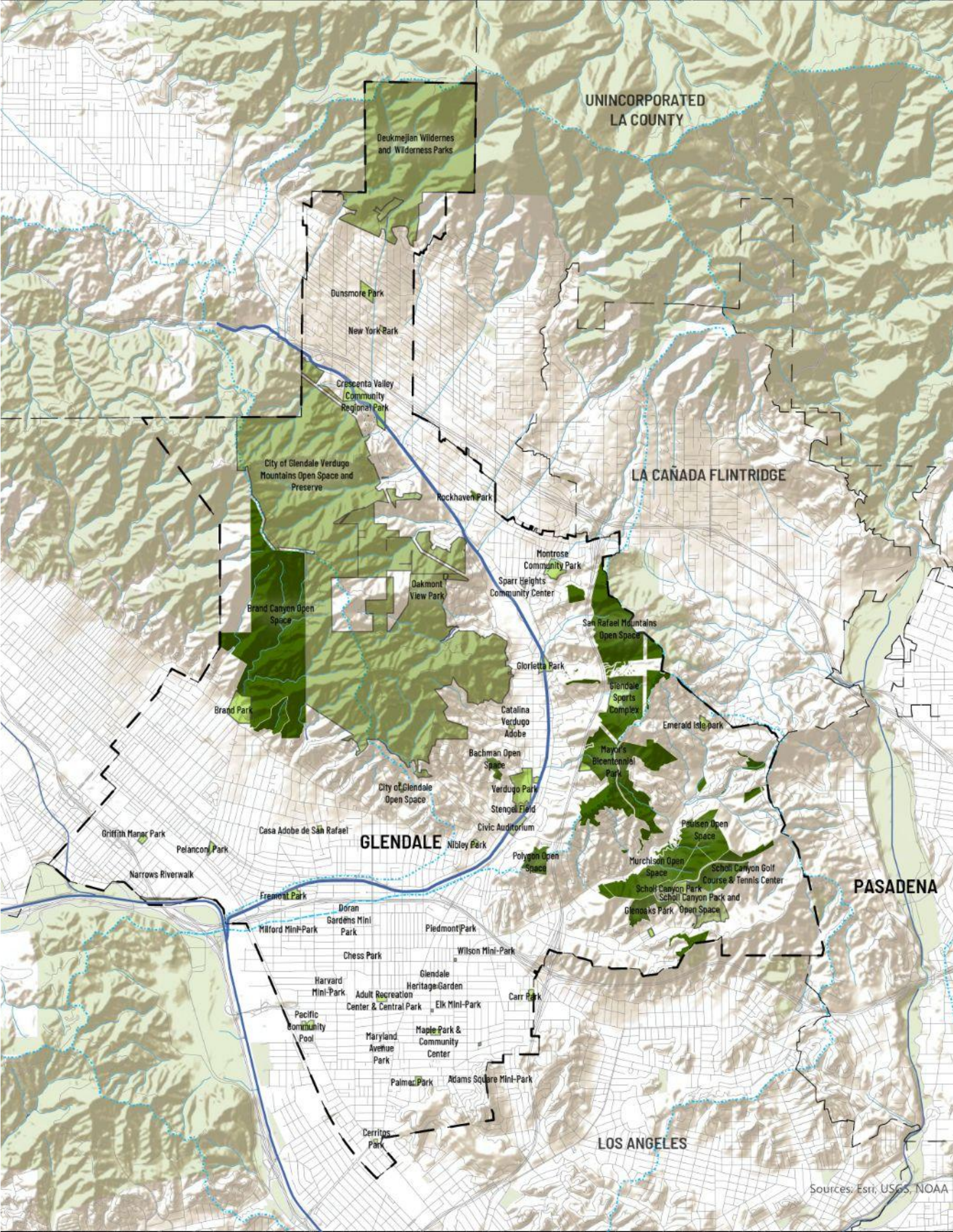
	2025												2026																						
	Mar	Apr	May	Jun	Jul	Aug	Sep	Oct	Nov		Dec	Jan	Feb	Mar	Apr	May	Jun	Jul	Aug	Sep	Oct														
TASK 1: Project Initiation + Project Management	PROJECT DURATION																																		
Project Kick-off Meeting	●																																		
Goal and Content Framing		●		●		●																													
Project Kick-off Meeting with Steering Committee				●																															
Project Status Meetings (16)		●		●		●		●		●		●		●		●		●		●		●													
City Council Updates (3)					●					●				●																					
PRCS Commission Updates (3)				●						●				●																					
City Dept./Rep Meetings + Interviews (6)			●	●			●	●			●	●																							
Agency Coordination (SCE, LA County, Etc. as needed) (4)					●					●				●							●														
Task 2: Community Outreach + Engagement	PROJECT DURATION																																		
In Person Community Meetings (6)					●	●				●	●				●	●																			
Stakeholder/Focus Group Meetings, Virtual (5)			●	●				●				●	●																						
Community Pop-ups, In-Person (5)					●	●		●	●		●																								
Task 3: Existing Conditions Analysis	12 WEEKS + 4 WEEKS REVIEW				REVIEW																														
Conceptual Design Meetings (Project Working Group) (2)			●		●																														
Task 4: Research + Analysis					22 WEEKS + 4 WEEKS REVIEW										REVIEW																				
Task 5: Prep + Adoption of Amendments to the Elements															20 WEEKS + REVIEW AND CEQA PERIOD				REVIEW						ENVIRONMENTAL REVIEW PERIOD										
Task 6: Environmental Review Preparation				18 MONTHS																															
30-Day Public Comment Period & Scoping Meeting														●																					
45-Day Public Comment Period & Public Meeting																								●											
Environmental Coordination and Meetings				●		●		●		●		●		●		REVIEW	●	●		●		●		●	PUBLIC REVIEW PERIOD				●		●				

PARKS IN GLENDALE

PARKS AND OPEN SPACES








-  Municipal Boundaries
-  Rivers, Channels, and Streams
-  Local Parks
-  Natural Areas
-  Regional Open Spaces

Source: Parks and Open Spaces, LA County GIS Portal. 2022.

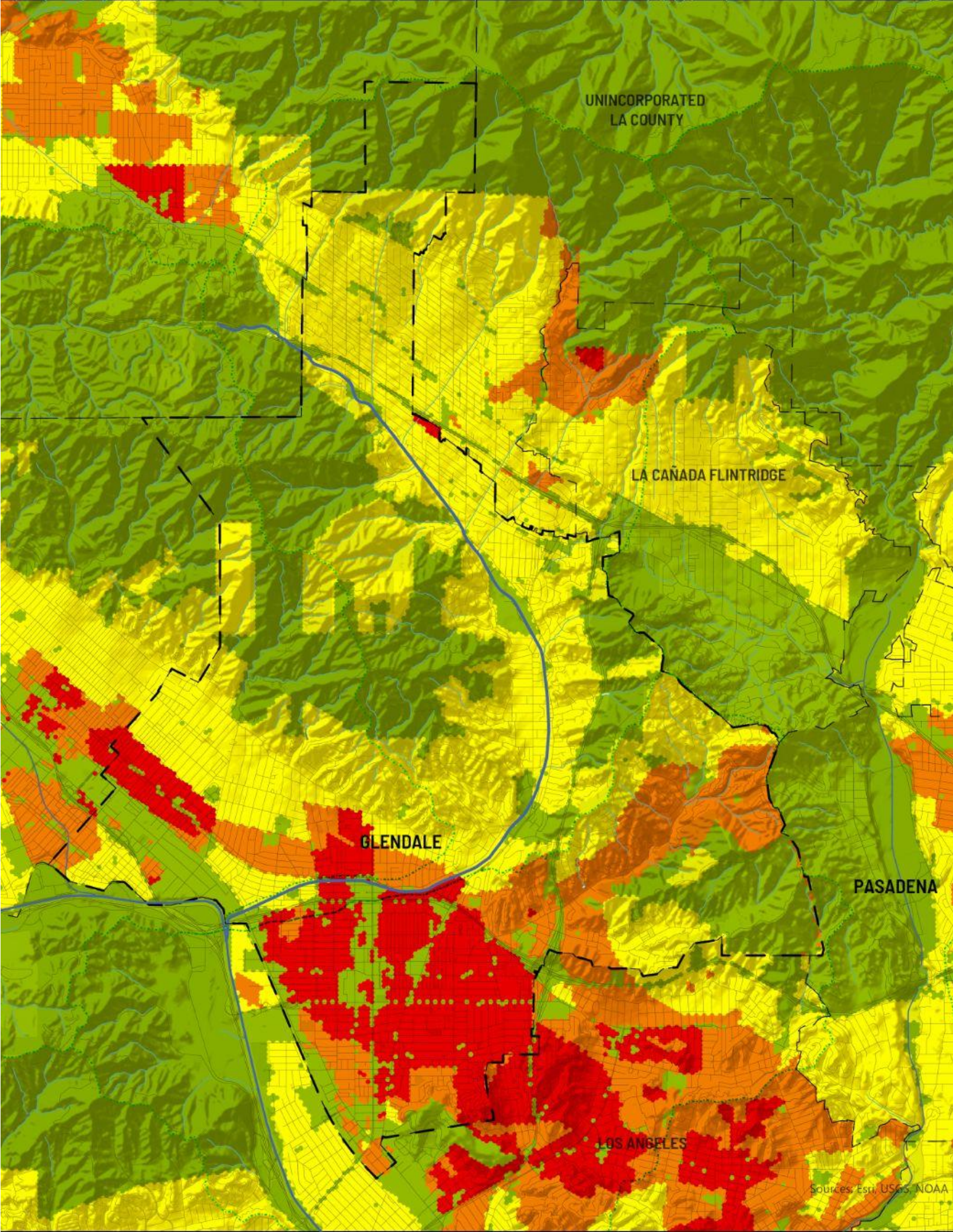


PARK NEED

LAC PARKS NEED

-  Municipal Boundaries
-  Rivers, Channels, and Streams
-  Very High Need
-  High Need
-  Moderate Need
-  Low Need
-  Very Low/Existing Parkland

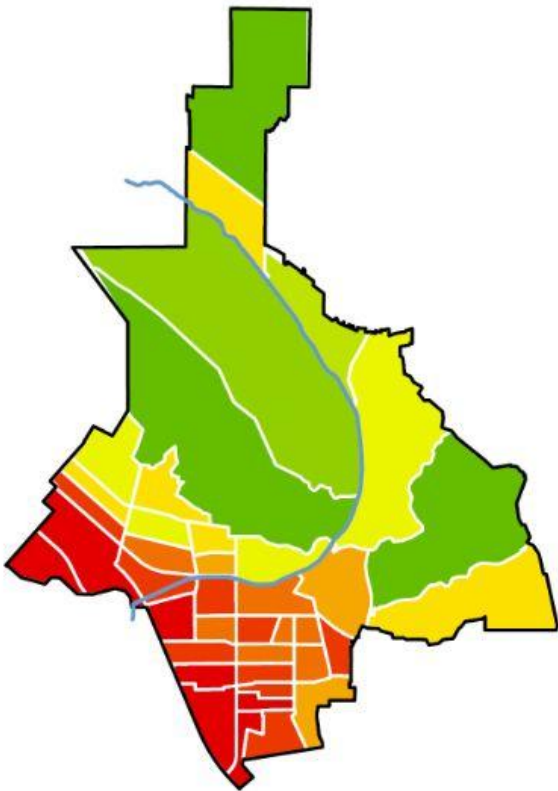
Source: Los Angeles Countywide Comprehensive Parks and Recreation Needs Assessment, 2016



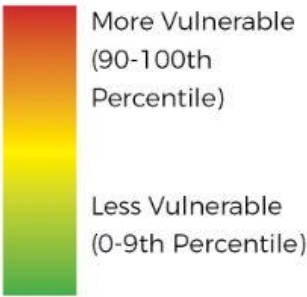
CRITERIA FOR PARKS NEEDS ASSESSMENT

CALENVIROSCREEN 4.0 ENVIRONMENTAL BURDEN

Communities near Downtown Glendale have higher environmental burdens



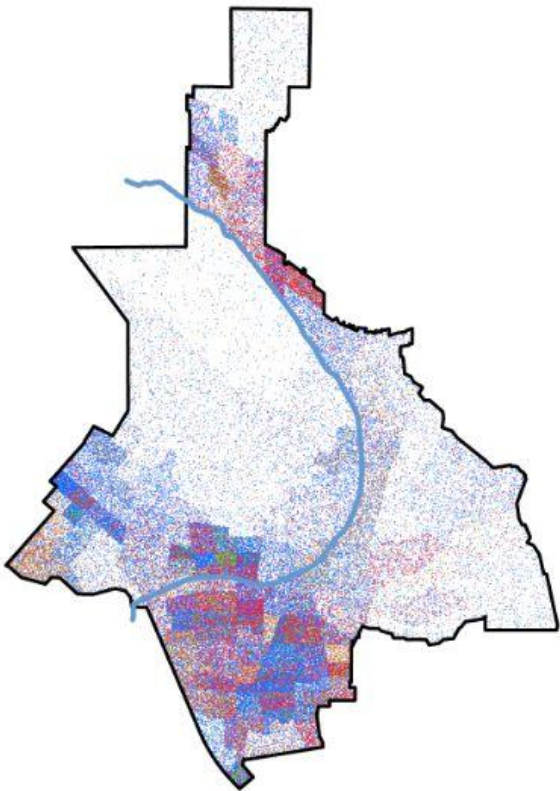
CALENVIROSCREEN 4.0 PERCENTILE



Source: California Office of Environmental Health Hazard Assessment, CalEnviroScreen, 2021.

RACIAL DIVERSITY IN GLENDALE

Glendale is a patchwork of diverse communities



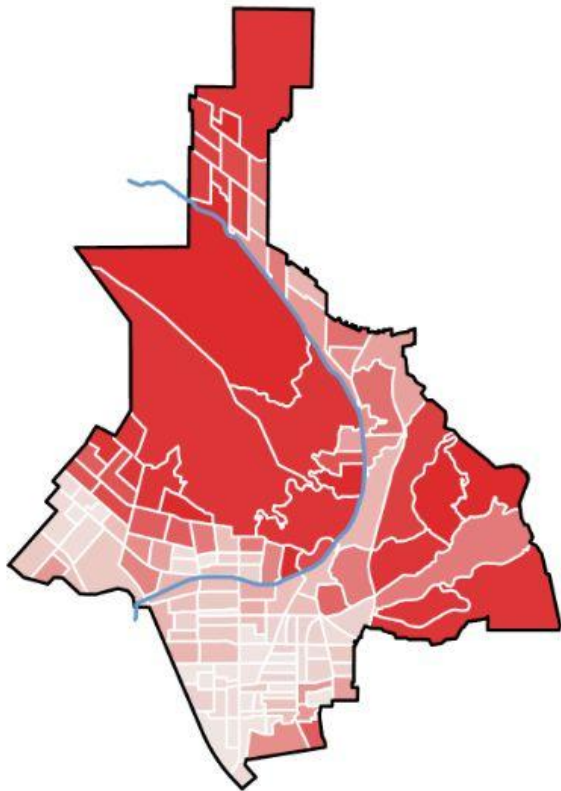
AMERICAN COMMUNITY SURVEY RACE/ETHNICITY

- Asian
- Black
- Hispanic/Latino
- Other/Two or More
- White

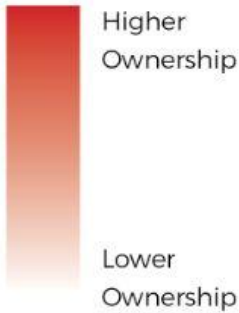
Source: U.S. Census Bureau, American Community Survey 2022 5-Year Estimates,, 2022

HOME OWNERSHIP RATES

Renter rates are higher in downtown with home ownership peaking in the upper areas of the Verdugo Wash



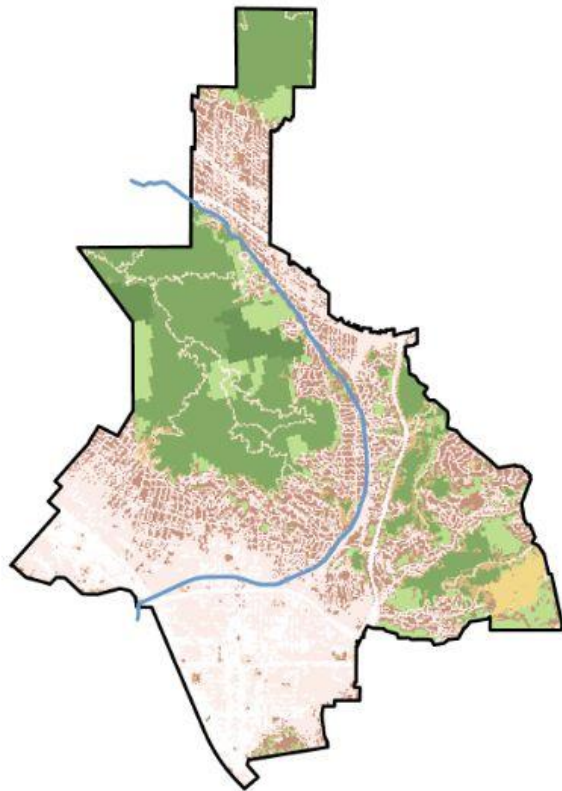
AMERICAN COMMUNITY SURVEY HOME OWNERSHIP



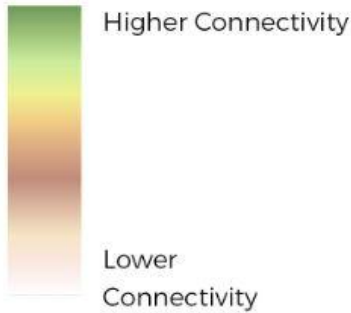
Source: U.S. Census Bureau, American Community Survey 2022 5-Year Estimates, Table B01001, 2022.

HABITAT CONNECTIVITY

The Verdugo Mountains provide essential habitat connectivity

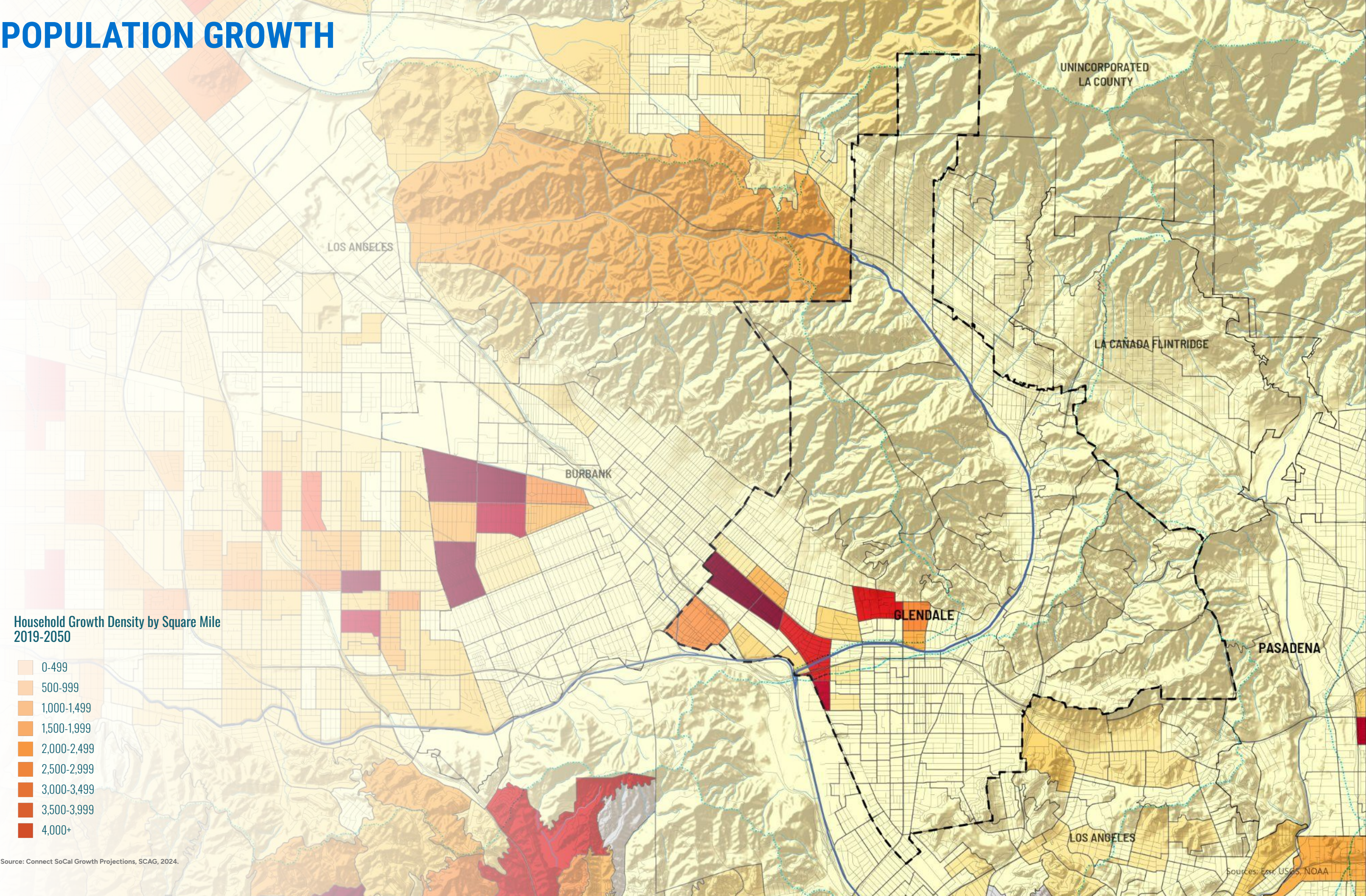


CALIFORNIA ESSENTIAL HABITAT CONNECTIVITY



Source: California Department of Transportation (Caltrans) and California Department of Fish and Game (CDFG), 2021.

POPULATION GROWTH



Household Growth Density by Square Mile
2019-2050

- 0-499
- 500-999
- 1,000-1,499
- 1,500-1,999
- 2,000-2,499
- 2,500-2,999
- 3,000-3,499
- 3,500-3,999
- 4,000+

Source: Connect SoCal Growth Projections, SCAG, 2024.

Sources: Esri, USGS, NOAA



40%+ Nationally



50%+ Nationally

RECREATION PROGRAM ASSESSMENT

- PROS Program Positioning Model (3PM) includes significant input from staff
- Outcome of the process will be successful and innovative recreation program offerings that result in:
 - Increased registration
 - Customer satisfaction
 - Customer retention
 - Increase in revenue

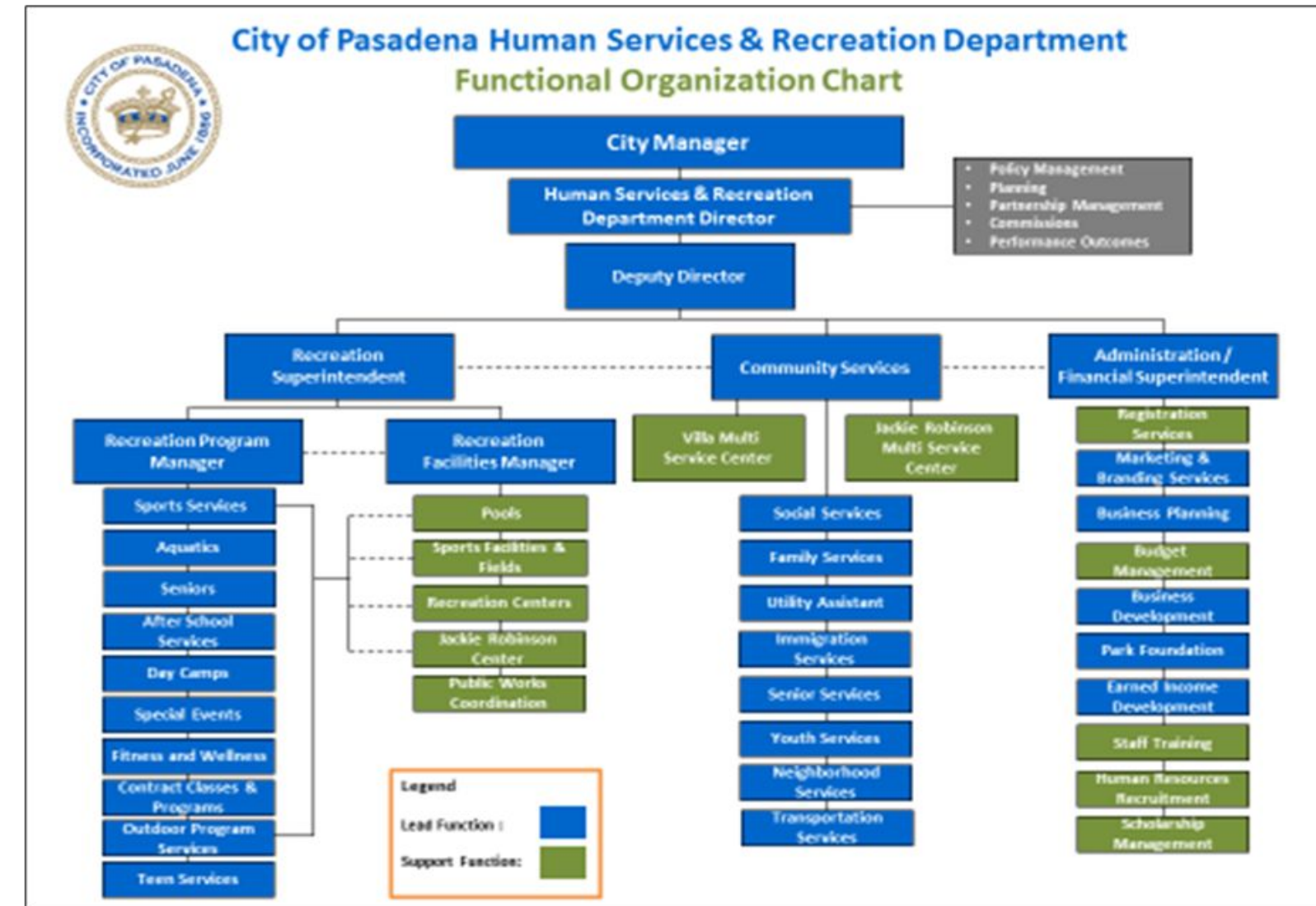
PROS Program Positioning Model Checklist

- ☐ **Review of Program Development Process**
- ☐ Age Segment Distribution
- ☐ **Lifecycle Analysis**
- ☐ Core Program Analysis and Development
- ☐ **Similar Provider Analysis**
- ☐ Market Position and Analysis
- ☐ **Technology Analysis**
- ☐ Staff Support for Service Delivery Excellence

© 2023 PROS Consulting

OPERATIONS AND MAINTENANCE REVIEW

- Evaluate each area of operations and focus on **right-staffing** not just right-sizing
- Evaluate policy and procedure to **ensure consistent implementation**
- Identify an **operational standards** that are **aligned** to the community's vision, mission and goals
- Create a **functional, outcome-driven organization**



FUNDING AND REVENUE STRATEGIES

Current

- General Fund
- Bonds
- Grants Impact Fees
- Enterprise Fund
- Fees

New

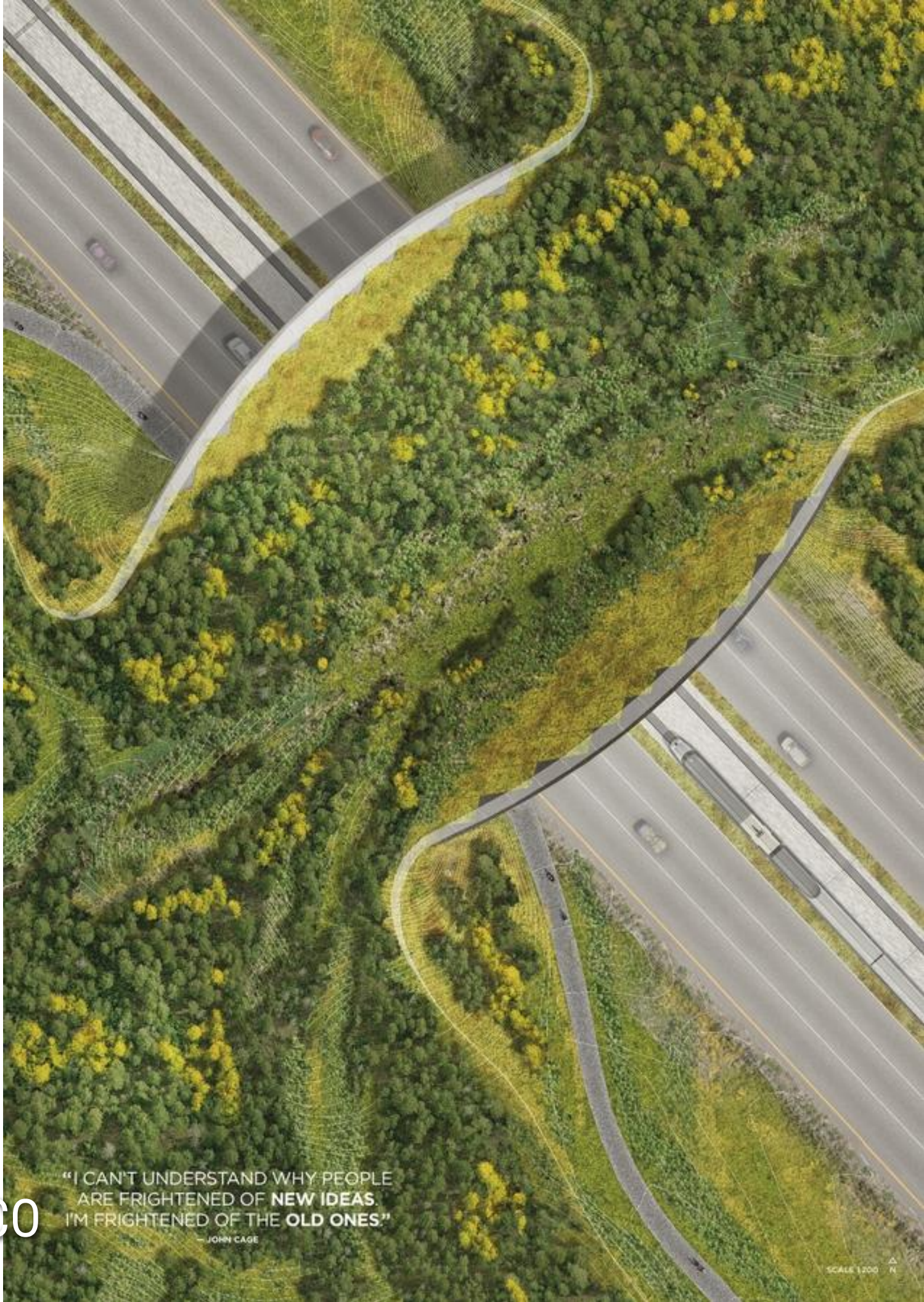
- Special Fees
- Public Private Partnership
- Parks and Recreation District (Large Facility needs)
- Special Improvement Districts
- Utility Corridor Easements
- Many Others

McCall PROS Funding Tools Community Input	% rated 4 or 5
Update the set fee that increases the cost of new residential building permits (Capital Expansion Fees)	69.8
Create a Recreation District for a Recreation/Aquatics Center property tax (using the McCall/Donnelly School District Boundary Area)	61.8
Create a new City boat ramp or other use areas fee (Daily \$15-25)	56.4
Create new specific LOT (Sales Tax) for park and recreation projects	52.4
Create a new bond measure (property tax covering the City) for large park and recreation projects	27.1



ARC INTERNATIONAL WILDLIFE CROSSING
INFRASTRUCTURE DESIGN COMPETITION | VAIL, CO

OLIN



"I CAN'T UNDERSTAND WHY PEOPLE
ARE FRIGHTENED OF NEW IDEAS.
I'M FRIGHTENED OF THE OLD ONES"
—JOHN CAGE

SCALE 1:2000



**ARC INTERNATIONAL WILDLIFE CROSSING
INFRASTRUCTURE DESIGN COMPETITION | VAIL, CO**

OLIN

EXPERIENCE



PARKS PLANNING



CULVER CITY PARKS PLAN | Culver City, CA



CLEVELAND PARKS & RECREATION PLAN | Cleveland, OH



FORT COLLINS PARKS AND RECREATION MASTER PLAN
Fort Collins, CO



LA RIVER MASTER PLAN | Los Angeles, CA

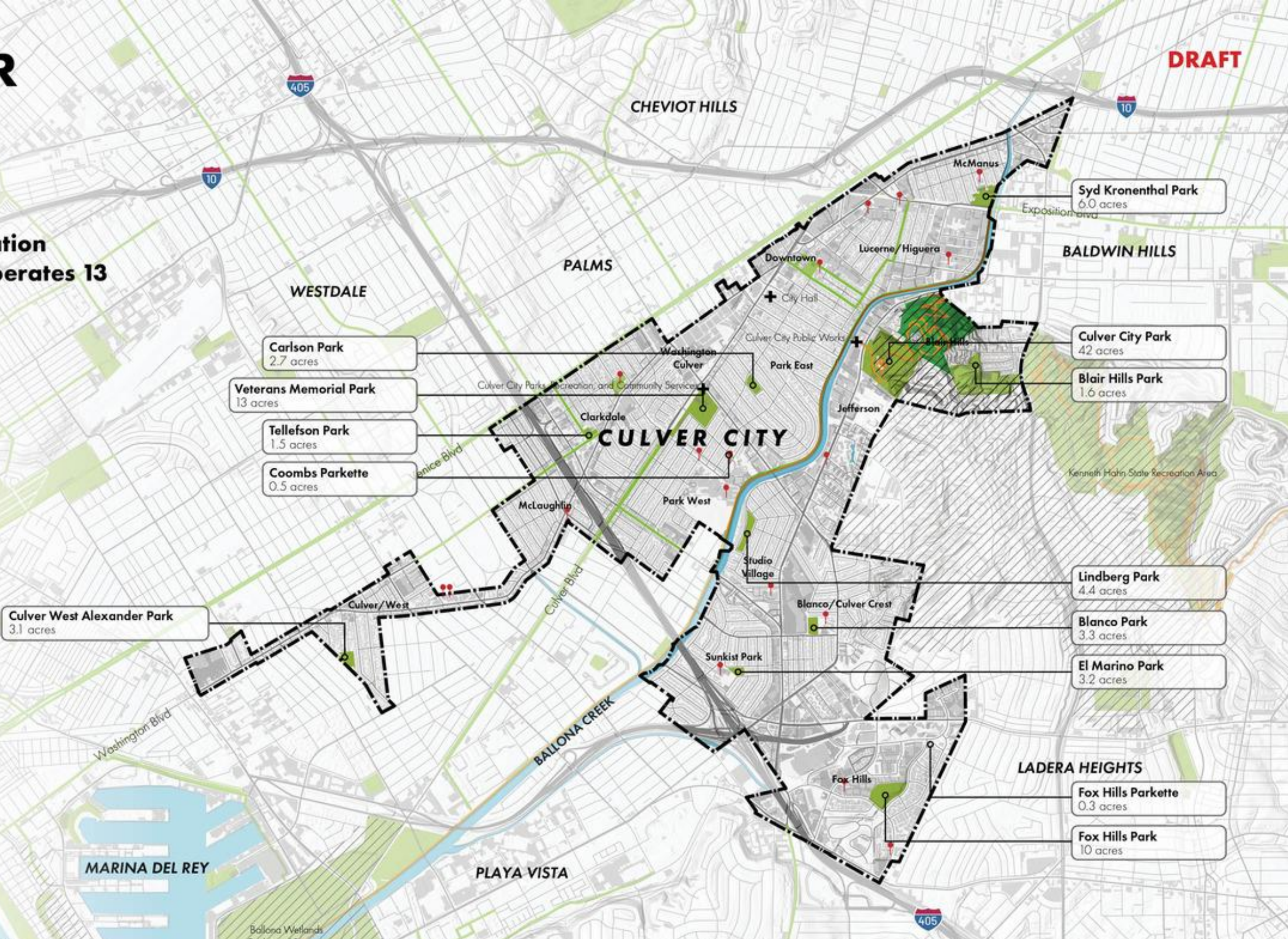
YOUR CULVER CITY PARKS

INTRODUCTION

Culver City Parks and Recreation Services (PRCS) owns and operates 13 parks.

MAP LEGEND

- Culver City Boundary
- PARKS AND OPEN SPACES**
 - Culver City Parks
 - Los Angeles County Parks
 - State Parks
 - Significant Ecological Areas
 - Countywide Multi-Use Trails
 - Water
- TRANSIT**
 - Bikeways
 - Roads
 - Freeways
 - Parking Lots
 - Building Footprints
 - Schools
 - Points of Interest



Map of the 13 parks owned and operated by Culver City.

Source: LA County GIS Data Portal, Countywide Parks and Open Space, 2016.



LA RIVER MASTER PLAN | LOS ANGELES, CA

OLIN

would you like to see in Fort Collins?

¿Qué nuevas tendencias o ideas innovadoras sobre parques y recreación le gustaría

at REIMAGINE. MASTER PLAN

More Art in Park + Trails

DIY JUMP Park

Airsoft / Paintball fields

Pickleball Clinics + classes at outdoor courts

PARKOUR PARK (WE ARE CHEAP!) ~1,000 SQ FT

Cell signal disconnectors YES!!

Pollinator Parks everywhere - educational

I can sing le track together to parks and schools

Update in Skatepark design

I'd like Park to recognize that pickleball is not just a fad. It's a rapidly growing sport that needs more space to play, indoors and out.

Volmont style skate bike park

MORE PICKLEBALL COURTS (WELL-LIT)

more NAVIGABLE River stretches (one less DAM)

safe evening walking paths

Gaming Facility that promotes physical activity

Drones or other skill classes made accessible / affordable

Allow E-MTB Bikes Class II on dirt trails

Bike Park

MTB PARK

Pickle Ball CENTER FOR LARGE GROUPS

Bike Park (Valmont)

Parkour!

more intown outdoor Pickleball Courts

Indoor Roller derby / Shared w/ other indoor sports

Pool!

Indoor pool like the city park leisure pool - out south

DOWNHILL ONLY MTB PATH. KEEP SINGLE TRACK SINGLE

Linking current parks with new soft surface trails

Easier, safer connectivity between parks

Could incorporate skills areas in between parks

Bitic Park (skills + jumps)

We need a bike park with...

- slopestyle

- dirt jumps

- cyclocross

- general skills

Art Sculptures as obstacles for Disc golf

Have happy hours for different sports

DISC GOLF Driving RANGE Turf Field

GRASS / TURF FIELD COMPLEX SO WE DON'T HAVE TO RUN TOURNAMENTS, LEAGUES IN OTHER TOWNS

Easily Accessible skatepark is located in different area of town "skatespots"

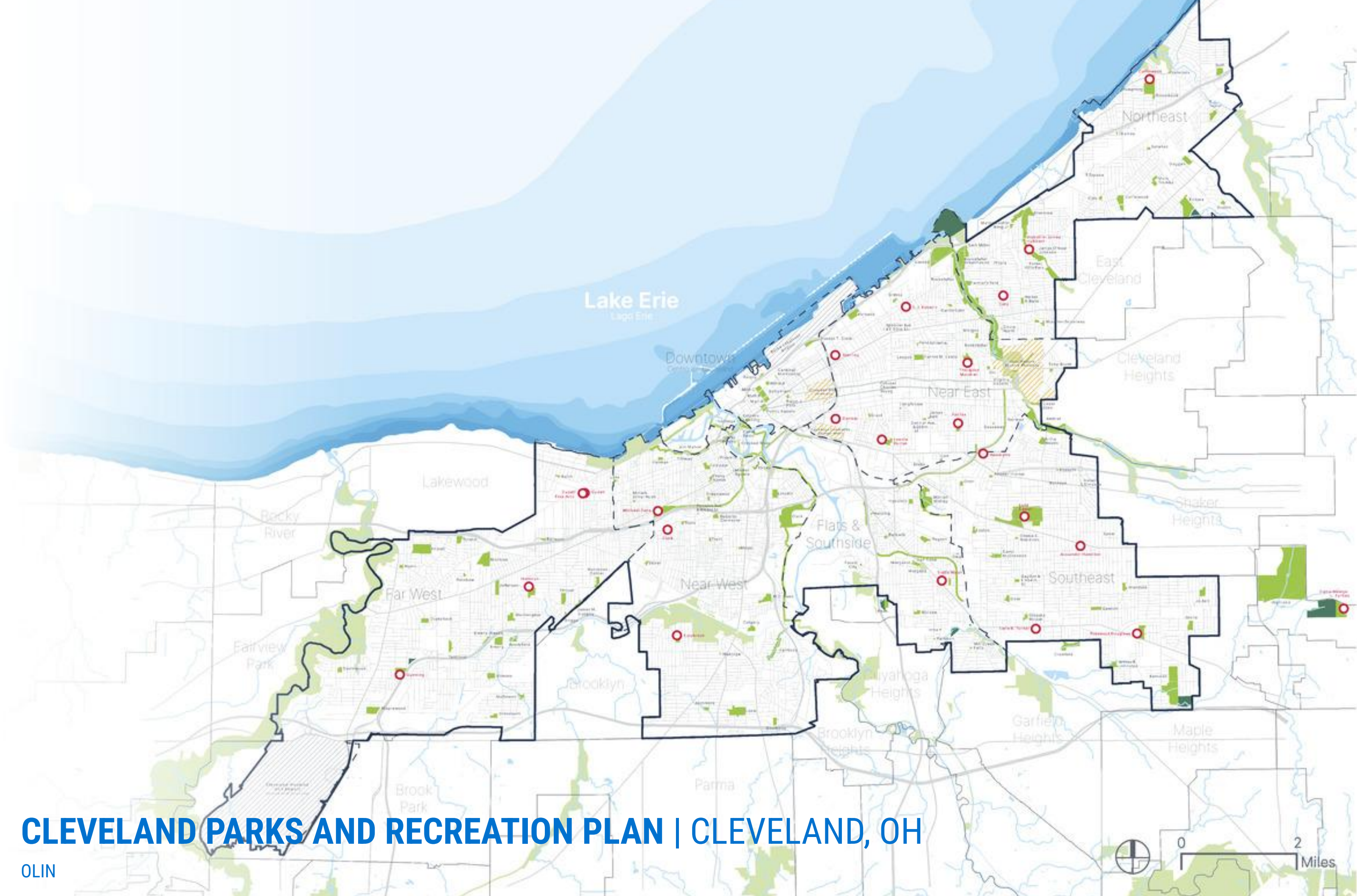
"DIY" style skate park that involve Design from local park users

Train in city park

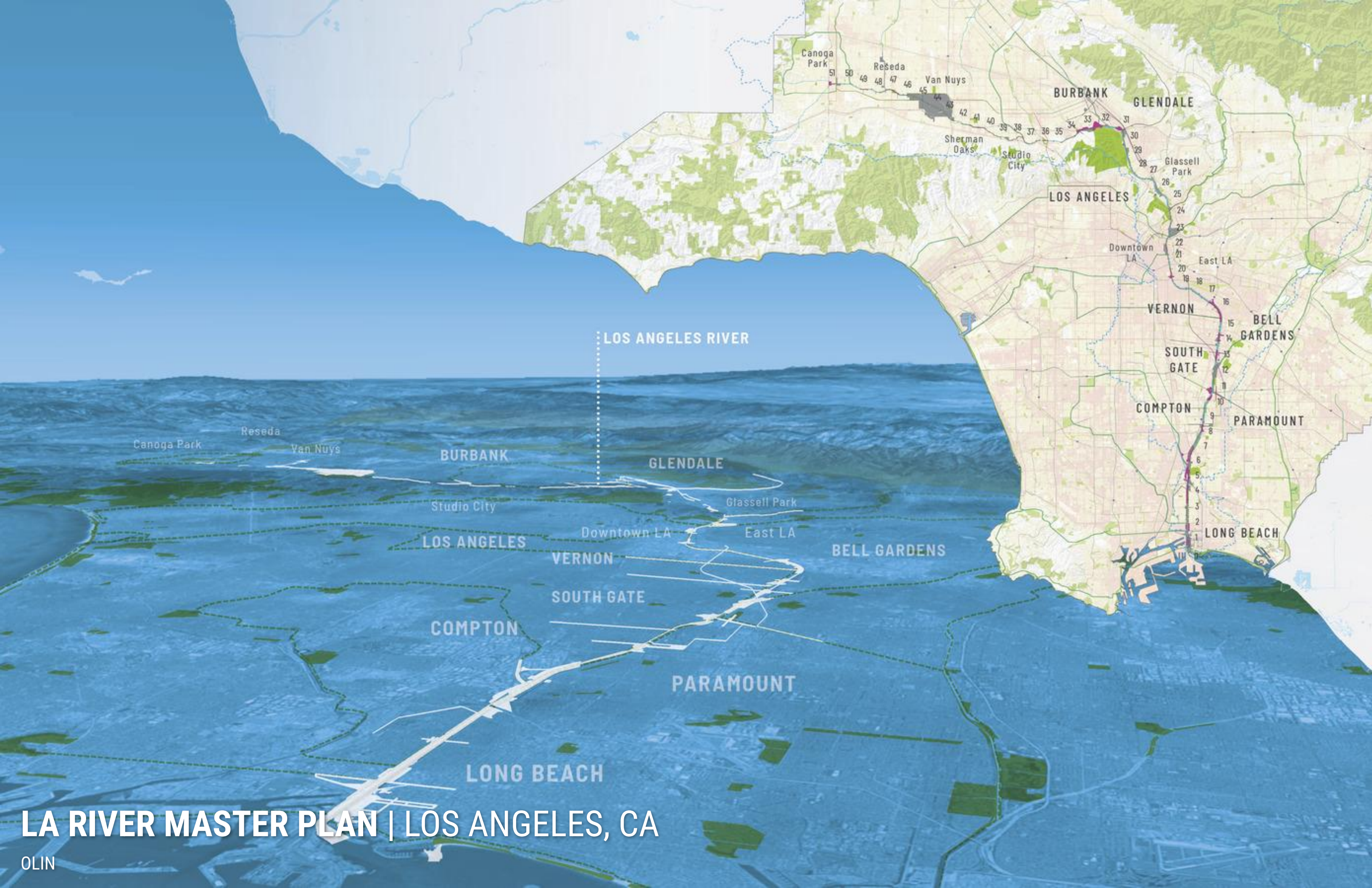
indoor play ground

Bike skills park

we would like to play a shared indoor facility



CLEVELAND PARKS AND RECREATION PLAN | CLEVELAND, OH



LA RIVER MASTER PLAN | LOS ANGELES, CA

BIODIVERSITY PROFILES AND HABITAT DESIGN

SAMPLE PLANT COMMUNITY VERTICAL STRUCTURE



SAMPLE PLANT COMMUNITY SPECIES LIST

ALLUVIAL FAN SAGE SCRUB

This community is found in sandy, floodable, low-gradient deposits along rivers. It is a community that occupies very dry, sandy areas and is considered a transitional community. Alluvial fan sage scrub is the signature community along the Santa Ana and is appropriate on particularly sandy, dry, or rocky soils.

- Very open in LA River watershed due to channelization and urbanization.
- Typically found in streambeds or wetlands.
- Can tolerate periodic flooding.

Figure 10: Alluvial fan sage scrub. Photo credit: [unintelligible]

Figure 11: Alluvial fan sage scrub. Photo credit: [unintelligible]

Figure 12: Alluvial fan sage scrub. Photo credit: [unintelligible]

Figure 13: Alluvial fan sage scrub. Photo credit: [unintelligible]

Figure 14: Alluvial fan sage scrub. Photo credit: [unintelligible]

Figure 15: Alluvial fan sage scrub. Photo credit: [unintelligible]

Figure 16: Alluvial fan sage scrub. Photo credit: [unintelligible]

Figure 17: Alluvial fan sage scrub. Photo credit: [unintelligible]

Figure 18: Alluvial fan sage scrub. Photo credit: [unintelligible]

Figure 19: Alluvial fan sage scrub. Photo credit: [unintelligible]

Figure 20: Alluvial fan sage scrub. Photo credit: [unintelligible]

SPECIES	SCIENTIFIC NAME	COMMON NAME	BITING + PERFORMANCE					DESCRIPTIVE FEATURES									
			TOXICITY	ALLERGENICITY	FLORAL	FRUIT	SEED	PLANT TYPE	HEIGHT	LEAF TYPE	LEAF COLOR	LEAF SHAPE	LEAF SIZE	LEAF DURATION	LEAF TEXTURE	LEAF COLOR	LEAF SHAPE
PERENNIAL FRESHWATER EMERGENT WETLAND	<i>Phragmites australis</i>	Common reed	1	1	1	1	1	Grass	10-15	Linear	Green	Linear	1-2	Perennial	Smooth	Green	Linear
	<i>Scirpus americanus</i>	Common cordgrass	1	1	1	1	1	Grass	10-15	Linear	Green	Linear	1-2	Perennial	Smooth	Green	Linear
	<i>Sagittaria arifolia</i>	Arrowhead	1	1	1	1	1	Forb	10-15	Linear	Green	Linear	1-2	Perennial	Smooth	Green	Linear
	<i>Sparganium angustifolium</i>	Sparganium	1	1	1	1	1	Grass	10-15	Linear	Green	Linear	1-2	Perennial	Smooth	Green	Linear
	<i>Vallisneria spiralis</i>	Palmetto	1	1	1	1	1	Forb	10-15	Linear	Green	Linear	1-2	Perennial	Smooth	Green	Linear
VALLEY OAK WOODLAND	<i>Quercus lobata</i>	Valley oak	1	1	1	1	1	Tree	10-15	Linear	Green	Linear	1-2	Perennial	Smooth	Green	Linear
	<i>Quercus agrifolia</i>	Coast live oak	1	1	1	1	1	Tree	10-15	Linear	Green	Linear	1-2	Perennial	Smooth	Green	Linear
	<i>Quercus engelmannii</i>	Engelmann oak	1	1	1	1	1	Tree	10-15	Linear	Green	Linear	1-2	Perennial	Smooth	Green	Linear
	<i>Quercus laevis</i>	Live oak	1	1	1	1	1	Tree	10-15	Linear	Green	Linear	1-2	Perennial	Smooth	Green	Linear
	<i>Quercus macrocarpa</i>	Large leaf oak	1	1	1	1	1	Tree	10-15	Linear	Green	Linear	1-2	Perennial	Smooth	Green	Linear

PLANT COMMUNITY ICONS

- ALLUVIAL FAN SAGE SCRUB
- COASTAL SAGE SCRUB
- CHAPARRAL
- DESERT SCRUB
- SOUTHERN COTTONWOOD-WILLOW RIPARIAN FOREST
- SOUTHERN COAST LIVE OAK RIPARIAN FOREST
- PERENNIAL FRESHWATER EMERGENT WETLAND
- VALLEY OAK WOODLAND
- SOUTHERN SYCAMORE RIPARIAN WOODLAND
- CALIFORNIA WALNUT WOODLAND
- COAST LIVE OAK WOODLAND
- CLIMATE ADAPTED TREES

TECHNICAL APPENDIX: DESIGN GUIDELINES P204-307

Source: LA River Master Plan, OLIN



SEPULVEDA BASIN VISION PLAN | LOS ANGELES, CA

OLIN



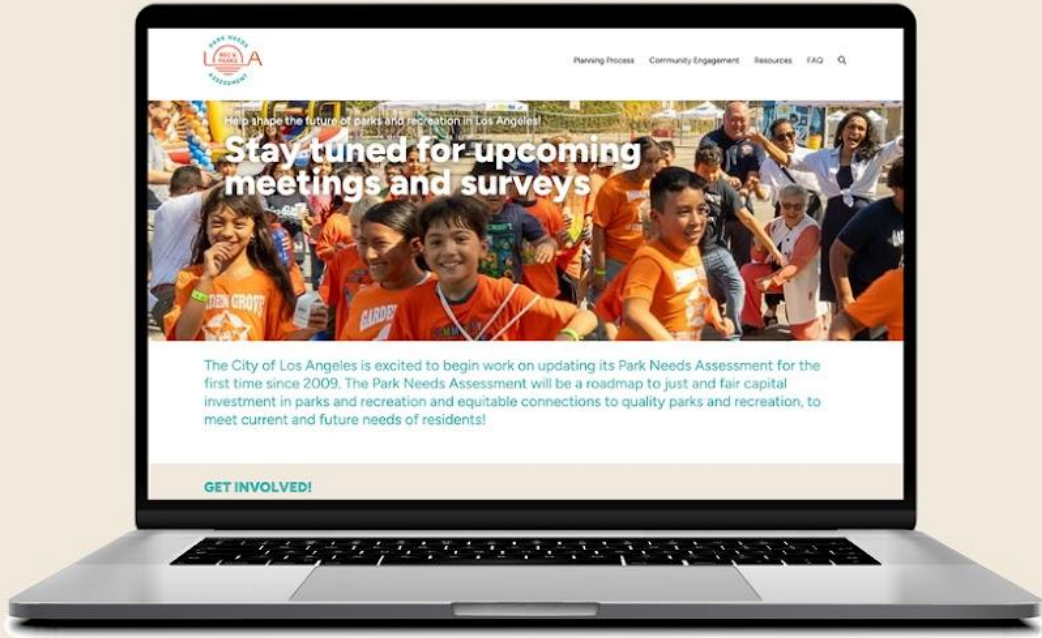
GLENDALE-LA GARDEN RIVER BRIDGE | LOS ANGELES, CA

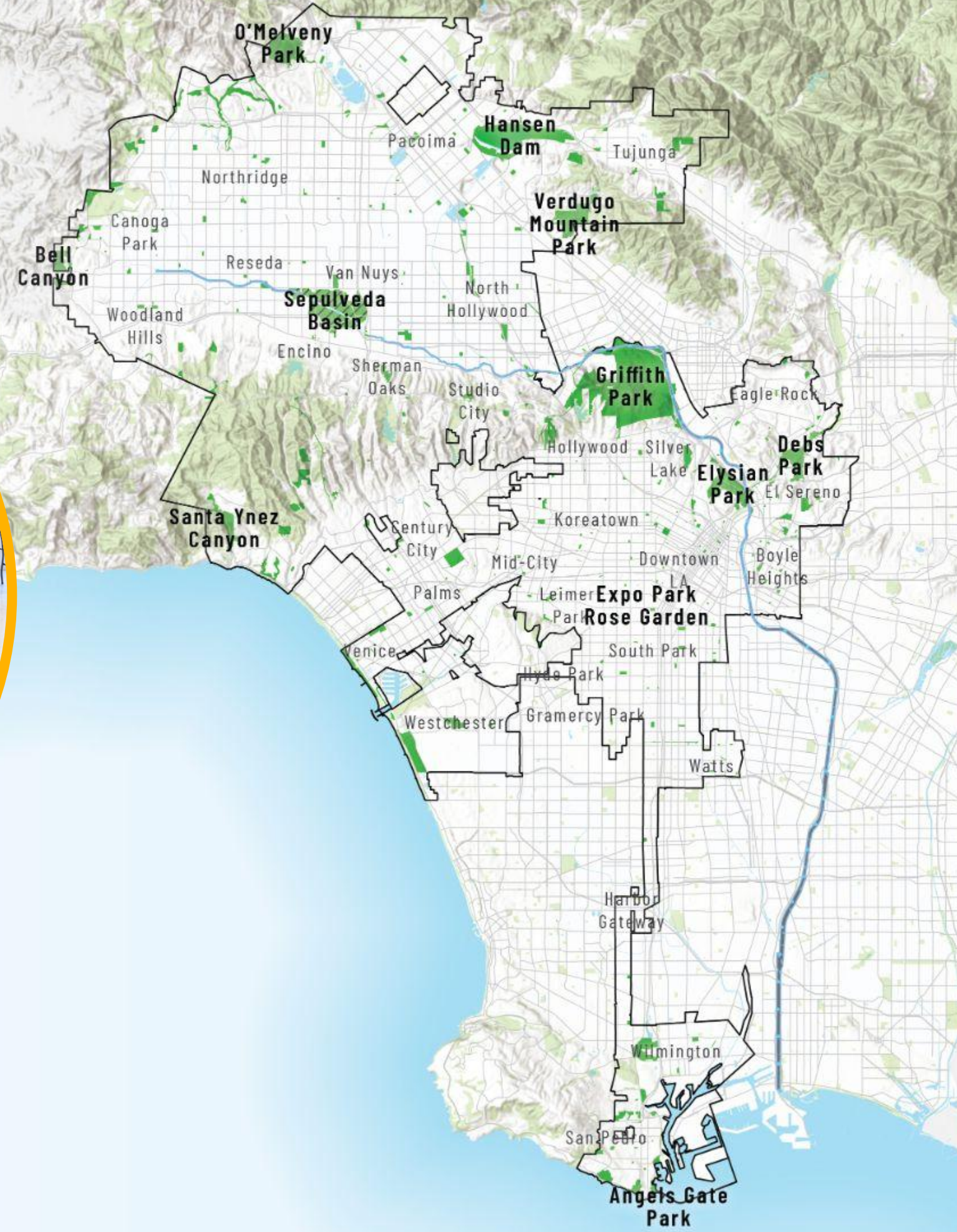


GLENDALE-LA GARDEN RIVER BRIDGE | LOS ANGELES, CA

OLIN

CITY OF LA PARK NEEDS ASSESSMENT





OLIN

